

Product datasheet for **RC203232**

RBM17 (NM_032905) Human Tagged ORF Clone

Product data:

Product Type:	Expression Plasmids
Product Name:	RBM17 (NM_032905) Human Tagged ORF Clone
Tag:	Myc-DDK
Symbol:	RBM17
Synonyms:	SPF45
Mammalian Cell Selection:	Neomycin
Vector:	pCMV6-Entry (PS100001)
E. coli Selection:	Kanamycin (25 ug/mL)
ORF Nucleotide Sequence:	>RC203232 ORF sequence Red=Cloning site Blue=ORF Green=Tags(s)

TTTTGTAATACGACTCACTATAGGGCGGCCGGAATTCGTCGACTGGATCCGGTACCGAGGAGATCTGCC
GCC**CGATCGCC**

ATGTCCTGTACGATGACCTAGGAGTGGAGACCAGTGAAGTCAAAAAAGGCTGGTCCAAAACTTCA
AACTTCTGCAGTCTCAGCTTCAGGTGAAGAAGGCAGCTCTCACTCAGGCAAAGAGCCAAAGGACGAAACA
AAGTACAGTCTCGCCCCAGTCACTGACCTGAAGCGAGGTGGCTCCTCAGATGACCGCAAATTGTGGAC
ACTCCACCGCATGTAGCAGCTGGGCTGAAGGATCCTGTTCCAGTGGGTTTTCTGCAGGGGAAGTCTGA
TTCCTTAGCTGACGAATATGACCTATGTTTCCTAATGATTATGAGAAAGTAGTGAAGCGCCAAAGAGA
GGAACGACAGAGACAGCGGGAGCTGGAAGACAAAAGGAAATAGAAGAAAGGGAAAAAGGCGTAAAGAC
AGACATGAAGCAAGTGGGTTTGCAAGGAGACCAGATCCAGATTCTGATGAAGATGAAGATTATGAGCGAG
AGAGGAGGAAAAGAAGTATGGGCGGAGCTGCCATTGCCCCACCCACTTCTCTGGTAGAGAAAAGACAAAGA
GTTACCCCGAGATTTTCTTATGAAGAGGACTCAAGACCTCGATCACAGTCTTCCAAAGCAGCCATTCT
CCCCAGTGTACGAGGAACAAGACAGACCAGATCTCCAACCGGACCTAGCAACTCTTCTCGTAACA
TGGGGGACCGGTGGCGCACAAGATCATGCAGAAGTACGGCTCCGGGAGGGCCAGGGTCTGGGGAAGCA
TGAGCAGGGCCTGAGCACTGCCTTGTCAAGTGGAGAAGACCAGCAAGCGTGGCGGCAAGATCATCGTGGC
GACGCCACAGAGAAAGATGCATCCAAGAAGTCAAGTCAATCAATCCGCTGACTGAAATACTTAAGTGTCTTA
CTAAAGTGGTCTTACTAAGGAACATGGTTGGTGGGAGAGGTGGATGAAGACTTGGAAAGTTGAAACCA
GGAAGAATGTGAAAAATATGGCAAAGTTGGAAAATGTGTGATATTTGAAATTCCTGGTGCCTGATGAT
GAAGCAGTACGGATATTTTAGAATTTGAGAGAGTTGAATCAGCAATTAAGCGGTTGTTGACTGAAATG
GGAGGTATTTGGTGGACGGGTGGTAAAAGCATGTTTCTACAATTTGGACAAATTCAGGGTCTTGGATT
GGCAGAACAAAGTT

ACGGTACGGGCGGCTCGAGCAGAAACTCATCTCAGAAGAGGATCTGGCAGCAAATGATATCTGGATT
ACAAGGATGACGACGATAAGGTTTAA



Protein Sequence: >RC203232 protein sequence
Red=Cloning site Green=Tags(s)

MSLYDDLGVETSDSKTEGWSKNFKLLQSQLQVKAALTQAKSQRTKQSTVLAPVIDLKRGGSSDDRQIVD
 TPPHVAAGLKDPVPSGF SAGEVL IPLADEYDPMFPNDYEVVVKRQREERQRQRELERQKE IEEREKRRKD
 RHEASGFARRPDPDSDEDEDYERERRKRSMGGAAIAPPTSLVEKDKELPRDFPYEEDSRPRSQSSKAAIP
 PPVYEEQDRPRSPTGPSNSFLANMGGTVAHKIMQKYGFREGQGLGKHEQGLSTALSVEKTSKRRGGKIIVG
 DATEKDASKSDSNPLTEILKCPKVVLLLRNMV GAGEVDEDELEVETKEECEKYGVGKCVIFEIPGAPDD
 EAVRIFLEFERVESAIKAVVDLNGRYFGGRVVKACFYNLDKFRVLDLAEQV

TRTRPLEQKLISEEDLAANDILDYKDDDDKV

Chromatograms: https://cdn.origene.com/chromatograms/mk6078_a10.zip

Restriction Sites: SgfI-MluI

Cloning Scheme:



ACCN: NM_032905

ORF Size: 1203 bp

OTI Disclaimer: The molecular sequence of this clone aligns with the gene accession number as a point of reference only. However, individual transcript sequences of the same gene can differ through naturally occurring variations (e.g. polymorphisms), each with its own valid existence. This clone is substantially in agreement with the reference, but a complete review of all prevailing variants is recommended prior to use. [More info](#)

OTI Annotation: This clone was engineered to express the complete ORF with an expression tag. Expression varies depending on the nature of the gene.

Components: The ORF clone is ion-exchange column purified and shipped in a 2D barcoded Matrix tube containing 10ug of transfection-ready, dried plasmid DNA (reconstitute with 100 ul of water).

Reconstitution Method:

1. Centrifuge at 5,000xg for 5min.
2. Carefully open the tube and add 100ul of sterile water to dissolve the DNA.
3. Close the tube and incubate for 10 minutes at room temperature.
4. Briefly vortex the tube and then do a quick spin (less than 5000xg) to concentrate the liquid at the bottom.
5. Store the suspended plasmid at -20°C. The DNA is stable for at least one year from date of shipping when stored at -20°C.

RefSeq: [NM_032905.5](#)

RefSeq Size: 3342 bp

RefSeq ORF: 1206 bp

Locus ID: 84991

UniProt ID: [Q96I25](#)

Cytogenetics: 10p15.1

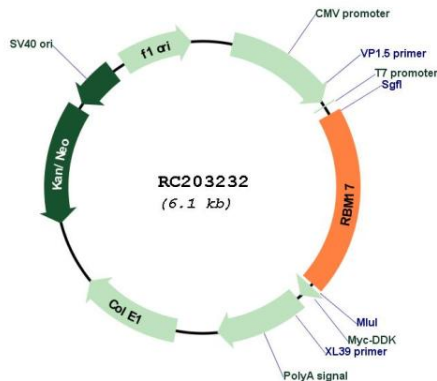
Domains: G-patch, RRM, RRM_1

Protein Pathways: Spliceosome

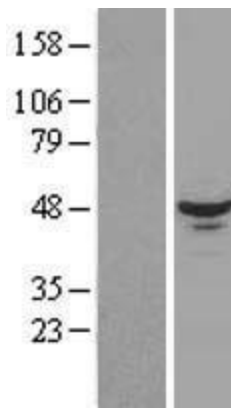
MW: 45 kDa

Gene Summary: This gene encodes an RNA binding protein. The encoded protein is part of the spliceosome complex and functions in the second catalytic step of mRNA splicing. Alternatively spliced transcript variants have been described. Related pseudogenes exist on chromosomes 9 and 15. [provided by RefSeq, Mar 2009]

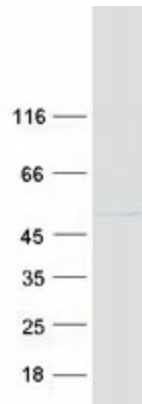
Product images:



Circular map for RC203232



Western blot validation of overexpression lysate (Cat# [LY428938]) using anti-DDK antibody (Cat# [TA50011-100]). Left: Cell lysates from untransfected HEK293T cells; Right: Cell lysates from HEK293T cells transfected with [RC227492] using transfection reagent MegaTran 2.0 (Cat# [TT210002]).



Coomassie blue staining of purified RBM17 protein (Cat# [TP303232]). The protein was produced from HEK293T cells transfected with RBM17 cDNA clone (Cat# RC203232) using MegaTran 2.0 (Cat# [TT210002]).