

Product datasheet for **RC203217**

DELE1 (NM_014773) Human Tagged ORF Clone

Product data:

Product Type:	Expression Plasmids
Product Name:	DELE1 (NM_014773) Human Tagged ORF Clone
Tag:	Myc-DDK
Symbol:	DELE1
Synonyms:	DELE; DELE1(L); KIAA0141
Mammalian Cell Selection:	Neomycin
Vector:	pCMV6-Entry (PS100001)
E. coli Selection:	Kanamycin (25 ug/mL)



[View online »](#)

ORF Nucleotide Sequence:

>RC203217 ORF sequence
 Red=Cloning site Blue=ORF Green=Tags(s)

TTTTGTAATACGACTCACTATAGGGCGGCCGGAATTCGTCGACTGGATCCGGTACCGAGGAGATCTGCC
 GCC**CGCATCGCC**

ATGTGGCGCCTCCCGGGACTCCTGGGCCGAGCTCTCCCGTACACTGGGACCTAGCCTCTGGAGGGTGA
 CTCTAAGTCCACCAGCCAGATGGGCCTCAGACTACCTCCTCCACTTTGCTGGTTCTGTGCCTAACCT
 CGACAGGTCAGGTCCCCATGGCCAGGCACGAGCGGGGTCCAAGTCCCATGGATGGAAGGATGCCTTC
 CAATGGATGTCTTCCCGTGTCTCCCGAACACCCTATGGGATGCCATATCTTGGGCACTCTGGCCGTGC
 TGGCCCTCGAGCTGGCAAGGCAGATCCACTCCAGGCATCCCTGCCAGCAGGACCTCAGCGGGTAGAACA
 CTGCTCCTGGCACAGTCCCCTGGACCGTTTCTTCTCATCTCCCTTGTGGCACCCATGCTCCTCACTGCGA
 CAACACATCTCCCAGCCCCGATGGCCAGCTCCAGGCACACTGGCCTCAGGGAACCCAGGCTTGGCC
 AGGAAGAAGCCTCAGCTCAGCCCCGGAACTTCTACACAACCTTTGAGAGGAGCTCGTCTCAGGACCC
 CTCTGAGGAAGTCCCGGTGATTTTGGCTTCTGCATGCCAGTAGTAGCATCGAGTCCGAGGCAAAACCA
 GCCCAGCCTCAGCCCACTGGTAAAAGGAACAAGATAAATCAAAAACCTTTCCCTTGGAGGAGCTGTGA
 CTTCCATTTCAGCAGCTCTTCCAGCTCAGTGTTCATCACTTTCAACTTCTGGGAACAGAGAACATGAA
 GAGTGGCGACCACACGGCAGCCTTTTCTACTTCCAGAAAGCTGCAGCCCGCGGTACAGCAAAGCGCAG
 TACAATGCGGGCTTGTGTATGAGCATGGCAGAGGCACCCCCAGGGACATTAGCAAGGCGGTCTTTATT
 ATCAGTTGGTGGCAGCCAGGGCCACAGCCTGGCTCAGTACCGCTATGCCAGGTGCCTACTACGAGACCC
 AGCCTCTTCGTGGAACCTGAGCGGCAGAGGGCAGTGTCTTGTGAAGCAGGCTGCAGACTCAGGCTTG
 AGAGAGGCCCAAGCTTCTCGGGTGTCTTTCACCAAGGAGCCCTACCTGGATGAGCAGAGAGCTGTGA
 AATATCTTTGGCTTGCAGCAACAATGGGGACTCACAGAGCAGGTACCACCTTGGAAATTTGCTATGAGAA
 AGGCCTTGGTGTGACAGAGGAATCTGGGAGAGCCCTTGGATGTTACCAGCAGTCAGCCGCTCTGGGAAAT
 GAGGCCGCCAGGAGAGGCTGCGAGCCCTTTTCCATGGGGGCTGCAGCCCCGGGGCCAGCGACCTGA
 CAGTTACAGGACTGAAGTCTTTCTCAGCCCTCCCTCTGCAGCTTGAACACCCTGCTAGCAGGAACCTC
 ACGCCTACCACATGCCTCGAGCACAGGCAACCTTGGCCTCCTCTGCAGAAGTGGGCATCTCGGAGCCAGC
 CTGGAAGCCTCCAGCAGGGCTATTCCCCACACCCTACCCACTGGAAAGGAGTGTGTAAGACTAGGTT
 TTGGC

ACGCGTACGCGGCCGCTCGAGCAGAAACTCATCTCAGAAGAGGATCTGGCAGCAAATGATATCTGGATT
 ACAAGGATGACGACGATAAGGTTTAA

Protein Sequence:

>RC203217 protein sequence
 Red=Cloning site Green=Tags(s)

MWRLPGLLGRALPRTLGPSTLWVTPKSTSPDGPQTSSSTLLVPVFNLDKRSRPHGPGTSGGPRSHGWKDAF
 QWSSRVSPNTLWDAISWGLAVLALQLARQIHFQASLPAGPQRVEHCSWHSPLDRFFSSPLWHPCSSLR
 QHILPSPDGPAPRHTGLREPRLGQEEASAQPRNFSHNSLRGARPQDPSEEGPQDFGLHASSSIESEAKP
 AQPQPTGEKEQDKSKTSLSEEAVTSIQQLFQLSVSITFNFLGTENMKSGDHTAAF SYFQKAAARGYSKAQ
 YNAGLCHEHGRGTPRDISKAVLYYQLAASQGHSLAQYRYARCLLRDPASSWNPERQRAVSLKQAADSG
 REAQAFGLVLFTEPYLDEQRAVKYLWLAANNGDSQSRYLHGICYEKGLGVQRNLGEALRCYQQAALGN
 EAAQERLRALFSMGAAAPGPSDLTVTGLKSFSSPSLCSLNTLLAGTSRSLPHASSTGNLGLLCRSGHLGAS
 LEASSRAIPHPYPLERSVVRLGFG

TRTRPLEQKLISEEDLAANDILDYKDDDDKV

Chromatograms:

https://cdn.origene.com/chromatograms/mk6747_b05.zip

Restriction Sites:

Sgfl-MluI

Cloning Scheme:


ACCN: NM_014773

ORF Size: 1545 bp

OTI Disclaimer: The molecular sequence of this clone aligns with the gene accession number as a point of reference only. However, individual transcript sequences of the same gene can differ through naturally occurring variations (e.g. polymorphisms), each with its own valid existence. This clone is substantially in agreement with the reference, but a complete review of all prevailing variants is recommended prior to use. [More info](#)

OTI Annotation: This clone was engineered to express the complete ORF with an expression tag. Expression varies depending on the nature of the gene.

Components: The ORF clone is ion-exchange column purified and shipped in a 2D barcoded Matrix tube containing 10ug of transfection-ready, dried plasmid DNA (reconstitute with 100 ul of water).

Reconstitution Method:

1. Centrifuge at 5,000xg for 5min.
2. Carefully open the tube and add 100ul of sterile water to dissolve the DNA.
3. Close the tube and incubate for 10 minutes at room temperature.
4. Briefly vortex the tube and then do a quick spin (less than 5000xg) to concentrate the liquid at the bottom.
5. Store the suspended plasmid at -20°C. The DNA is stable for at least one year from date of shipping when stored at -20°C.

RefSeq: [NM_014773.2](#), [NP_055588.2](#)

RefSeq Size: 4988 bp

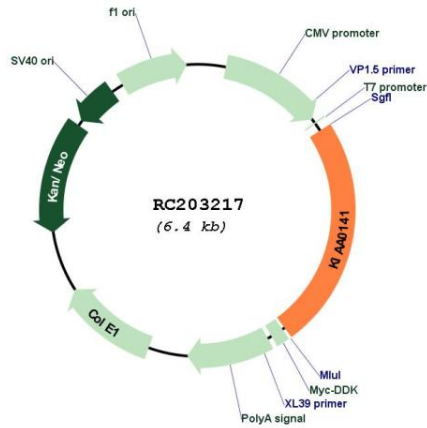
RefSeq ORF: 1548 bp

Locus ID: 9812

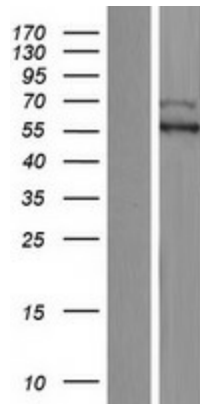
UniProt ID: [Q14154](#)

Cytogenetics: 5q31.3

Domains: SEL1
MW: 55.9 kDa
Gene Summary: Essential for the induction of death receptor-mediated apoptosis through the regulation of caspase activation.[UniProtKB/Swiss-Prot Function]

Product images:


Circular map for RC203217



Western blot validation of overexpression lysate (Cat# [LY428204]) using anti-DDK antibody (Cat# [TA50011-100]). Left: Cell lysates from untransfected HEK293T cells; Right: Cell lysates from HEK293T cells transfected with [RC227724] using transfection reagent MegaTran 2.0 (Cat# [TT210002]).