

Product datasheet for **RC203214**

SQSTM1 (NM_003900) Human Tagged ORF Clone

Product data:

Product Type:	Expression Plasmids
Product Name:	SQSTM1 (NM_003900) Human Tagged ORF Clone
Tag:	Myc-DDK
Symbol:	SQSTM1
Synonyms:	A170; DMRV; FTDALS3; NADGP; OSIL; p60; p62; p62B; PDB3; ZIP3
Mammalian Cell Selection:	Neomycin
Vector:	pCMV6-Entry (PS100001)
E. coli Selection:	Kanamycin (25 ug/mL)



[View online »](#)

ORF Nucleotide Sequence:

>RC203214 ORF sequence
 Red=Cloning site Blue=ORF Green=Tags(s)

TTTTGTAATACGACTCACTATAGGGCGGCCGGGAATTCGTCGACTGGATCCGGTACCGAGGAGATCTGCC
 GCC**CGGATCGCC**

ATGGCGTCGCTCACCGTGAAGGCCTACCTTCTGGCAAGGAGGACGCGGCGCGAGATTCGCCGCTTCA
 GCTTCTGCTGCAGCCCCGAGCCTGAGGCGGAAGCCGAGGCTGCGGCGGGTCCGGGACCCTGCGAGCGGCT
 GCTGAGCCGGGTGGCCGCCCTGTCCCCGCGCTGCGGCCTGGCGGCTCCAGGCGCACTACCGCGATGAG
 GACGGGGACTTGGTTGCCTTTCCAGTGACGAGGAATTGACAATGGCCATGTCCTACGTGAAGGATGACA
 TCTTCCGAATCTACATTAAGAGAAAAAGAGTGCCGCGGGACCACCGCCACCCTGTGCTCAGGAGGC
 GCCCCGCAACATGGTGCACCCCAATGTGATCTGCGATGGCTGCAATGGGCTGTGGTAGGAACCCGCTAC
 AAGTGCAGCGTCTGCCAGACTACGACTTGTGTAGCGTCTGCGAGGAAAGGGCTGCACCGGGGGCACA
 CCAAGCTCGATTCCCCAGCCCCTCGGGCACCTGTCTGAGGGCTTCTCGCACAGCCGCTGGCTCCGGAA
 GGTGAAACACGGACACTTCGGGTGGCCAGGATGGGAAATGGGTCCACCAGGAACTGGAGCCACGTCCT
 CCTCGTGCAGGGGAGGCCCGCCCTGGCCCCACGGCAGAATCAGCTTCTGGTCCATCGGAGGATCCGAGTG
 TGAATTTCTGAAGAACGTTGGGGAGAGTGTGGCAGCTGCCCTTAGCCCTCTGGGCATTGAAGTTGATAT
 CGATGTGGAGCACGGAGGGAAAAGAAGCCGCTGACCCCCGCTCTCCAGAGAGTTCCAGCACAGAGGAG
 AAGAGCAGCTCACAGCCAAGCAGCTGCTGCTCTGATCCCAGCAAGCCGGTGGGAATGTTGAGGGCGCCA
 CGCAGTCTCTGGCGGAGCAGATGAGAAAGATCGCCTTGGAGTCCGAGGGGCGCCCTGAGGAACAGATGGA
 GTCGGATAACTGTTCCAGGAGGAGATGATGACTGGACCCATCTGTCTTCAAAGAAGTGGACCCGCTACA
 GGTGAACCTCCAGTCCCTACAGATGCCAGAATCCGAAGGGCCAAGCTCTCTGGACCCCTCCAGGAGGGAC
 CCACAGGGCTGAAGGAAGCTGCCTTGTACCCACATCTCCCGCCAGAGGCTGACCCGCGGCTGATTGAGTC
 CCTCTCCAGATGCTGTCCATGGGCTTCTCTGATGAAGGCGGCTGGCTCACCAAGGCTCCTGCAGACCAAG
 AACTATGACATCGGAGCGGCTCTGGACACCATCCAGTATTCAAAGCATCCCCGCGGTTG

ACGCGTACGCGGCCGCTCGAGCAGAACTCATCTCAGAAGAGGATCTGGCAGCAATGATATCCTGGATT
 ACAAGGATGACGACGATAAGGTTTAA

Protein Sequence:

>RC203214 protein sequence
 Red=Cloning site Green=Tags(s)

MASLTVKAYLLGKEDAAREIRRFSCSPEPEAEAAAGPGPCERLLSRVAALFPALRPGGFQAHYRDE
 DGDLVAFSSDEELTMAMSYVKDDIFRIYIKEKKECRRDHRPPCAQEAPRNMVHPNVIDGCGNPGVVGTRY
 KCSVCPDYDLCSVCEGKGLHRGHTKLAFSPFGHLSEGFSHSRWLKVKHGHFGWPGWEMGPPGNWSPRP
 PRAGEARPGPTAESASGPSSEDPVNFLKNVGESVAAAALSPLGIEVDIDVEHGGKRSRLTPVSPESSTEE
 KSSSQSSCCSDPSKPGNVEGATQSLAEQMRKIALESEGRPEEQMESDNCSSGDDDDWHLSSKEVDPST
 GELQSLQMPSEGPSLDPSEQEPTGLKEAALYPHLPPEADPRLIESLSQMLSMGFSEGGWLRLLQTK
 NYDIGAALDTIQYSKHPPPL

TRTRPLEQKLISEEDLAANDILDYKDDDDKV

Chromatograms:

https://cdn.origene.com/chromatograms/mk6055_e12.zip

Restriction Sites:

Sgfl-Mlul

Cloning Scheme:


ACCN: NM_003900

ORF Size: 1320 bp

OTI Disclaimer: The molecular sequence of this clone aligns with the gene accession number as a point of reference only. However, individual transcript sequences of the same gene can differ through naturally occurring variations (e.g. polymorphisms), each with its own valid existence. This clone is substantially in agreement with the reference, but a complete review of all prevailing variants is recommended prior to use. [More info](#)

OTI Annotation: This clone was engineered to express the complete ORF with an expression tag. Expression varies depending on the nature of the gene.

Components: The ORF clone is ion-exchange column purified and shipped in a 2D barcoded Matrix tube containing 10ug of transfection-ready, dried plasmid DNA (reconstitute with 100 ul of water).

- Reconstitution Method:**
1. Centrifuge at 5,000xg for 5min.
 2. Carefully open the tube and add 100ul of sterile water to dissolve the DNA.
 3. Close the tube and incubate for 10 minutes at room temperature.
 4. Briefly vortex the tube and then do a quick spin (less than 5000xg) to concentrate the liquid at the bottom.
 5. Store the suspended plasmid at -20°C. The DNA is stable for at least one year from date of shipping when stored at -20°C.

Note: Plasmids are not sterile. For experiments where strict sterility is required, filtration with 0.22um filter is required.

RefSeq: [NM_003900.2](#)

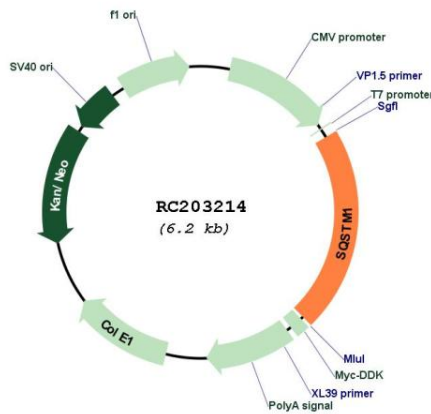
RefSeq Size: 2923 bp

RefSeq ORF: 1323 bp

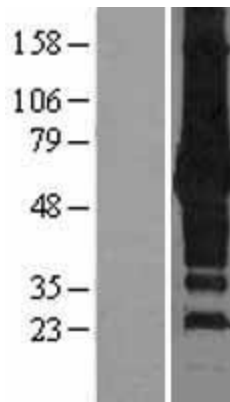
Locus ID: 8878

UniProt ID: [Q13501](#)
Cytogenetics: 5q35.3
Domains: PB1, ZnF_ZZ, UBA
Protein Families: Druggable Genome, Transcription Factors
MW: 47.7 kDa
Gene Summary: This gene encodes a multifunctional protein that binds ubiquitin and regulates activation of the nuclear factor kappa-B (NF- κ B) signaling pathway. The protein functions as a scaffolding/adaptor protein in concert with TNF receptor-associated factor 6 to mediate activation of NF- κ B in response to upstream signals. Alternatively spliced transcript variants encoding either the same or different isoforms have been identified for this gene. Mutations in this gene result in sporadic and familial Paget disease of bone. [provided by RefSeq, Mar 2009]

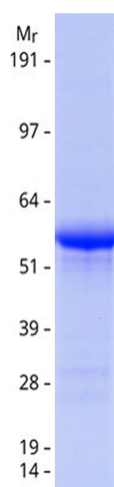
Product images:



Circular map for RC203214



Western blot validation of overexpression lysate (Cat# [LY401285]) using anti-DDK antibody (Cat# [TA50011-100]). Left: Cell lysates from untransfected HEK293T cells; Right: Cell lysates from HEK293T cells transfected with RC203214 using transfection reagent MegaTran 2.0 (Cat# [TT210002]).



Coomassie blue staining of purified SQSTM1 protein (Cat# [TP303214]). The protein was produced from HEK293T cells transfected with SQSTM1 cDNA clone (Cat# RC203214) using MegaTran 2.0 (Cat# [TT210002]).