

Product datasheet for RC203210

Thyroid Hormone Receptor alpha (THRA) (NM_199334) Human Tagged ORF Clone

Product data:

Product Type: Expression Plasmids
Product Name: Thyroid Hormone Receptor alpha (THRA) (NM_199334) Human Tagged ORF Clone
Tag: Myc-DDK
Symbol: Thyroid Hormone Receptor alpha
Synonyms: AR7; c-ERBA-1; CHNG6; EAR7; ERB-T-1; ERBA; ERBA1; NR1A1; THRA1; THRA2; TRAlpha
Mammalian Cell Selection: Neomycin
Vector: pCMV6-Entry (PS100001)
E. coli Selection: Kanamycin (25 ug/mL)
ORF Nucleotide Sequence: >RC203210 representing NM_199334
 Red=Cloning site Blue=ORF Green=Tags(s)

TTTTGTAATACGACTCACTATAGGGCGGCCGGAATTCGTCGACTGGATCCGGTACCGAGGAGATCTGCC
GCC**CGATCGCC**

ATGGAACAGAAGCCAAGCAAGGTGGAGTGTGGGTGAGCCAGAGGAGAACAGTGCCAGGTCACCAGATG
GAAAGCGAAAAAGAAAGAACGGCAATGTTCCCTGAAAACCAGCATGTCAGGGTATATCCCTAGTTACCT
GGACAAAGACGAGCAGTGTGTCGTGTGGGGACAAGGCAACTGGTTATCACTACCGCTGTATCACTTGT
GAGGGCTGCAAGGGCTTCTTTCCGGCACAATCCAGAAGAACCCTCCATCCACCTATTCTGCAAAATATG
ACAGCTGTGTGTCATTGACAAGATCACCCGCAATCAGTGCCAGCTGTGCCGCTTCAAGAAGTGCATCGC
CGTGGGCATGGCCATGGACTTGGTTCTAGATGACTCGAAGCGGGTGGCCAAGCGTAAGCTGATTGAGCAG
AACCGGGAGCGCGCGGAAGGAGGAGATGATCCGATCACTGCAGCAGCGACCAGAGCCCACTCCTGAAG
AGTGGGATCTGATCCACATTGCCACAGAGGCCATCGCAGCACCATGCCAGGGCAGCCATTGGAAACA
GAGGCGGAAATTCCTGCCGATGACATTGGCCAGTCACCCATTGTCTCCATGCCGGACGGAGACAAGGTG
GACCTGGAAGCCTTCAGCGAGTTACCAAGATCATCACCCGGCCATCACCCGTGTGGTGGACTTTGCCA
AAAACTGCCATGTTCTCCGAGCTGCCTTGGCAAGACCAGATCATCCTCCTGAAGGGGTGCTGCATGGA
GATCATGTCCCTGCGGGCGGCTGCCGTACGACCCTGAGAGCGACACCCTGACGCTGAGTGGGGAGATG
GCTGTCAAGCGGGAGCAGCTCAAGAATGGCGGCTGGGCGTAGTCTCCGACGCCATTTGAACTGGGCA
AGTCACTCTCTGCCTTTAACCTGGATGACACGGAAGTGGCTCTGCTGCAGGCTGTCTGCTAATGTCAAC
AGACCGCTCGGGCCTGTGTGTGGACAAGATCGAGAAGAGTCAAGGAGGTACCTGCTGGCGTTCGAG
CACTACGTCAACCACCGCAAACACAACATTCCGCACTTCTGGCCAAAGCTGCTGATGAAGGTGACTGACC
TCCGCATGATCGGGCCTGCCACGCCAGCCGCTTCTCCACATGAAAGTCGAGTGCCCCACCGAACTCTT
CCCCCACTCTTCTCGAGGTCTTTGAGGATCAGGAAGTC

ACGCGTACGCGGCCGCTCGAGCAGAAACTCATCTCAGAAGAGGATCTGGCAGCAAATGATATCCTGGATT
ACAAGGATGACGACGATAAGGTTTAA



[View online >](#)

Protein Sequence: >RC203210 representing NM_199334
Red=Cloning site Green=Tags(s)

MEQKPSKVECGSDPEENSARSPDGKRKRKNGQCCLKTSMSGYIPSYLDKDEQCVCGDKATGYHYRCITC
 EGCKGFRRTIQKLNHPTYSCKYDSCCVIDKITRNQCQLCRFKKCIAVGMAMDLVDDSKRVAKRKLIEQ
 NRERRRKEEMIRSLQQRPEPTPEEWDLIHIATEAHRSTNAQGSWKQRKFLPDDIGQSPIVSMPDGDKV
 DLEAFSEFTKIIITPAITRVVDFAKKLPFSELPCEQIILLKGCCMEIMSLRAAVRYDPESDTLTLSGEM
 AVKREQLKNGGLGVVSDAIFELGKSLSAFNLDDTEVALLQAVLLMSTDRSGLLCVDKIEKSQEAYLLAFE
 HYVNRKHNIPIHFWPKLLMKVTDLRMIGACHASRFLHMKVECPTLFPPLFLEVFEQEV

TRTRPLEQKLISEEDLAANDILDYKDDDDKV

Chromatograms: https://cdn.origene.com/chromatograms/ja2739_a05.zip

Restriction Sites: SgfI-MluI

Cloning Scheme:



ACCN: NM_199334

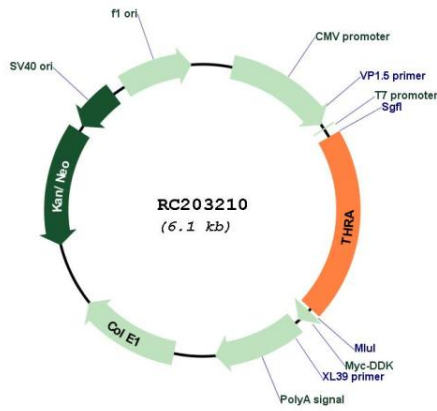
ORF Size: 1230 bp

OTI Disclaimer: Due to the inherent nature of this plasmid, standard methods to replicate additional amounts of DNA in E. coli are highly likely to result in mutations and/or rearrangements. Therefore, OriGene does not guarantee the capability to replicate this plasmid DNA. Additional amounts of DNA can be purchased from OriGene with batch-specific, full-sequence verification at a reduced cost. Please contact our customer care team at custsupport@origene.com or by calling 301.340.3188 option 3 for pricing and delivery.

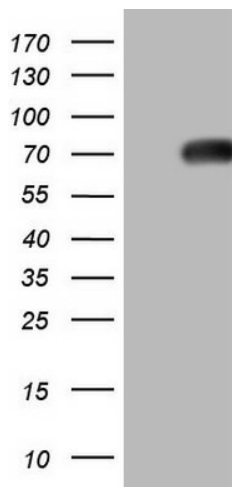
The molecular sequence of this clone aligns with the gene accession number as a point of reference only. However, individual transcript sequences of the same gene can differ through naturally occurring variations (e.g. polymorphisms), each with its own valid existence. This clone is substantially in agreement with the reference, but a complete review of all prevailing variants is recommended prior to use. [More info](#)

OTI Annotation:	This clone was engineered to express the complete ORF with an expression tag. Expression varies depending on the nature of the gene.
Components:	The ORF clone is ion-exchange column purified and shipped in a 2D barcoded Matrix tube containing 10ug of transfection-ready, dried plasmid DNA (reconstitute with 100 ul of water).
Reconstitution Method:	<ol style="list-style-type: none">1. Centrifuge at 5,000xg for 5min.2. Carefully open the tube and add 100ul of sterile water to dissolve the DNA.3. Close the tube and incubate for 10 minutes at room temperature.4. Briefly vortex the tube and then do a quick spin (less than 5000xg) to concentrate the liquid at the bottom.5. Store the suspended plasmid at -20°C. The DNA is stable for at least one year from date of shipping when stored at -20°C.
RefSeq:	NM_199334.5
RefSeq Size:	2400 bp
RefSeq ORF:	1233 bp
Locus ID:	7067
UniProt ID:	P10827
Cytogenetics:	17q21.1
Protein Families:	Druggable Genome, Nuclear Hormone Receptor, Transcription Factors
Protein Pathways:	Neuroactive ligand-receptor interaction
MW:	46.8 kDa
Gene Summary:	The protein encoded by this gene is a nuclear hormone receptor for triiodothyronine. It is one of the several receptors for thyroid hormone, and has been shown to mediate the biological activities of thyroid hormone. Knockout studies in mice suggest that the different receptors, while having certain extent of redundancy, may mediate different functions of thyroid hormone. Alternatively spliced transcript variants encoding distinct isoforms have been reported. [provided by RefSeq, Jul 2008]

Product images:



Circular map for RC203210



HEK293T cells were transfected with the pCMV6-ENTRY control (Cat# [PS100001], Left lane) or pCMV6-ENTRY THRA (Cat# RC203210, Right lane) cDNA for 48 hrs and lysed. Equivalent amounts of cell lysates (5 ug per lane) were separated by SDS-PAGE and immunoblotted with anti-THRA (Cat# [TA805187]).