

Product datasheet for **RC203208**

ZC3HAV1L (NM_080660) Human Tagged ORF Clone

Product data:

Product Type: Expression Plasmids
Product Name: ZC3HAV1L (NM_080660) Human Tagged ORF Clone
Tag: Myc-DDK
Symbol: ZC3HAV1L
Synonyms: C7orf39
Mammalian Cell Selection: Neomycin
Vector: pCMV6-Entry (PS100001)
E. coli Selection: Kanamycin (25 ug/mL)
ORF Nucleotide Sequence: >RG203208 representing NM_080660
 Red=Cloning site Blue=ORF Green=Tags(s)

CTATAGGGCGGCCGGAATTCGTCGACTGGATCCGGTACCGAGGAGATCTGCC
 GCC**CGATCGCC**

ATGGCGGAGCCCACAGTGTGCTCCTTCTCACCAAGGTGCTGTGCGCCACGGCGGCCGCATGTTCTGA
 AGGACCTGCGCGGCCACGTGGAGCTGTCGGAGGCCAGGCTCCGGGACGTGCTGCAGCGGCCGGGCCGA
 GCGTTTCTGCTGCAGGAGGTGGAGACGCAGGAGGGCCTCGGGGACGCGGAGGCCAGGCCGGCGCCGGC
 GCGGTGGCGGTGGCGGCACCTCCGCTGGAGGGTGGTGGCCGTGCTCTGTGCGCCTCTGCGCCCGCT
 ACCAGCGCGGCGAGTGCCAGGCCTGCGACCAGCTGCACCTTCTGCCGCGGCACATGCTGGCAAGTGCCC
 CAACCGGACTGCTGGTCTACCTGTACCCTTTCCCATGATATCCACACACCTGTCAACATGCAGGTCTG
 AAAAGCCATGGACTTTTTGGTCTCAATGAAAACAGCTTCGGATCCTGCTTTTGCAAGTACCCCTGTCT
 TTTTACCAGAGGTCTGTTTGCTCTACAACAAAGGGGAAGCCCTGTATGGCTACTGCAACCTCAAGGATAA
 ATGCAACAAGTTTCATGTGTGCAATCCTTTGTGAAAGGAGAAATGCAAATTCAGACCTGCAACCGTCC
 CATCAGCTTATCCATGCTGCATCTTTGAAGTGTACAGGACCAAGGACTGAATATTCCAAGTGTGTTA
 ATTTTCAGATAATCTCCACCTACAAGCATATAAAGCTGCACAAGATGCTTAAAAATACAGATAATTATC
 ACCTTCGACTGAGCATTACAAGGCCTTGAGAAGCAAGGAGTGCACGCAGCTGGAGCTGCAGAAGCTGGT
 CCTCTGGCTTCTGTCCCTGCTCAGTCGGCCAAGAAGCCCTGCCAGTGTCTTGCGAGAAG

ACGCGTACGCGGCCGCTCGAG - GFP Tag - GTTTAA



[View online »](#)

Protein Sequence: >RC203208 representing NM_080660
Red=Cloning site Green=Tags(s)

MAEPTVCSFLTKVLCAHGGRMFLKDLRGHVLESEARLRDVLQRAGPERFLLQEVEQEGLDAAEAAAAG
 AVGGGGTSAWRVAVSSVRLCARYQRGECQACDQLHFCRRHMLGKCPNRDCWSTCTLSHDIHTPVNMQVL
 KSHGLFGLNENQLRILLQLNDPCLLPEVCLLYNKGEALYGYCNLKDCKNFHVCKSFVKGECKLQTCCKRS
 HQLIHAASLKLQDQGLNIPSVVNFQIIISTYKHIKHKMLENTDNSSPSTEHSQGLEKQGVHAAGAAEAG
 PLASVPAQSAKKPCPVSCEK

TRTRPLEQKLISEEDLAANDILDYKDDDDKV

Chromatograms: https://cdn.origene.com/chromatograms/mg3268_d09.zip

Restriction Sites: SgfI-MluI

Cloning Scheme:



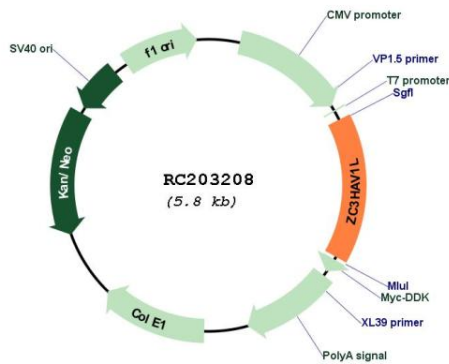
ACCN: NM_080660

ORF Size: 900 bp

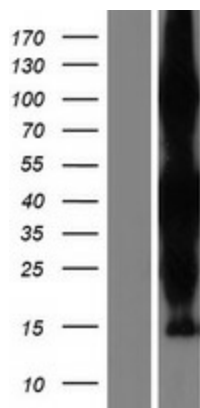
OTI Disclaimer: Due to the inherent nature of this plasmid, standard methods to replicate additional amounts of DNA in E. coli are highly likely to result in mutations and/or rearrangements. Therefore, OriGene does not guarantee the capability to replicate this plasmid DNA. Additional amounts of DNA can be purchased from OriGene with batch-specific, full-sequence verification at a reduced cost. Please contact our customer care team at custsupport@origene.com or by calling 301.340.3188 option 3 for pricing and delivery.

The molecular sequence of this clone aligns with the gene accession number as a point of reference only. However, individual transcript sequences of the same gene can differ through naturally occurring variations (e.g. polymorphisms), each with its own valid existence. This clone is substantially in agreement with the reference, but a complete review of all prevailing variants is recommended prior to use. [More info](#)

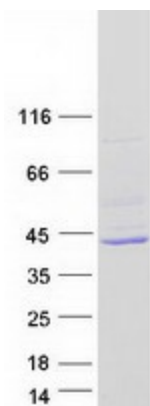
OTI Annotation:	This clone was engineered to express the complete ORF with an expression tag. Expression varies depending on the nature of the gene.
Components:	The ORF clone is ion-exchange column purified and shipped in a 2D barcoded Matrix tube containing 10ug of transfection-ready, dried plasmid DNA (reconstitute with 100 ul of water).
Reconstitution Method:	<ol style="list-style-type: none"> 1. Centrifuge at 5,000xg for 5min. 2. Carefully open the tube and add 100ul of sterile water to dissolve the DNA. 3. Close the tube and incubate for 10 minutes at room temperature. 4. Briefly vortex the tube and then do a quick spin (less than 5000xg) to concentrate the liquid at the bottom. 5. Store the suspended plasmid at -20°C. The DNA is stable for at least one year from date of shipping when stored at -20°C.
RefSeq:	<u>NM_080660.2, NP_542391.1</u>
RefSeq Size:	1802 bp
RefSeq ORF:	903 bp
Locus ID:	92092
UniProt ID:	<u>Q96H79</u>
Cytogenetics:	7q34
MW:	32.8 kDa

Product images:


Circular map for RC203208



Western blot validation of overexpression lysate (Cat# [LY408964]) using anti-DDK antibody (Cat# [TA50011-100]). Left: Cell lysates from untransfected HEK293T cells; Right: Cell lysates from HEK293T cells transfected with RC203208 using transfection reagent MegaTran 2.0 (Cat# [TT210002]).



Coomassie blue staining of purified ZC3HAV1L protein (Cat# [TP303208]). The protein was produced from HEK293T cells transfected with ZC3HAV1L cDNA clone (Cat# RC203208) using MegaTran 2.0 (Cat# [TT210002]).