

Product datasheet for **RC203206**

ABHD8 (NM_024527) Human Tagged ORF Clone

Product data:

| | |
|---------------------------|---|
| Product Type: | Expression Plasmids |
| Product Name: | ABHD8 (NM_024527) Human Tagged ORF Clone |
| Tag: | Myc-DDK |
| Symbol: | ABHD8 |
| Mammalian Cell Selection: | Neomycin |
| Vector: | pCMV6-Entry (PS100001) |
| E. coli Selection: | Kanamycin (25 ug/mL) |
| ORF Nucleotide Sequence: | >RC203206 ORF sequence Red=Cloning site Blue=ORF Green=Tags(s) |

TTTTGTAATACGACTCACTATAGGGCGGCCGGAATTCGTCGACTGGATCCGGTACCGAGGAGATCTGCC
GCC**CGATCGCC**

ATGCTGACCGGGGTGACCGACGGTATTTTCTGTTGCTGCTGGGCACGCCCCCAACGCTGTGGGGCCAC
TGGAGAGCGTCGAGTCCAGCGATGGCTACACCTTTGTAGAGGTCAAGCCCGGCCGCTGCTGCGGGTAA
GCATGCAGGACCCGCCAGCCGCTGCCACCTCCACCATCATCCGCATCCTCGGATGCAGCCAGGGG
GACCTCTCCGGCTTGGTCCGCTGTACGCGCCGATCACCCTGTACCGCAATGGCGGTTGCTGGTGGAAA
ACCTGGCCGAGCCCTCGAGCCGACCTCTACACGGGCAGAATGGCTCTGGGGAGCCCGCCGCCCT
GGAGGTGGAGCTGGCAGATCCGGCGGGCAGCGATGGCCGCTTGGCCCGCAGCGCAGGCAGCGGCAGC
GGCAGTGGCAGTGGTGGCGGGCGGGCAGCCAGGCGCCCAAGAGGACCATCCATATTGACTGTGAGA
AGCGCATCACTAGCTGCAAAGGCGCCAGGCCGACGTGGTGTCTTTTTTCATCCATGGTGTGCGCGGTT
CCTGGCCATCTGGAAGGAGCAGCTGGACTTCTTTGTGCGCCTAGGCTATGAGGTGGTGGCTCCTGACCTG
GCCGCCACGGGGCCAGCTCTGCGCCCCAGGTGGCCGACGCTACACCTTCTATGCGCTGGCTGAGGACA
TGCAGCAATCTCAAGCGCTATGCCAAGAAGCGAAATGTGCTCATTGGCCATTCCTACGGTGTCTCTTT
CTGCACATTCCTGGCACATGAGTACCCAGACCTAGTGACAAGGTGATCATGATCAATGGCGGGGCCCT
ACGGCGCTGGAGCCAGCTTCTGCTCAATCTTCAACATGCCACCTGCGTCTGCACTGCTGTGCGCCCT
GCCTGGCCTGGAGCTTCTCAAGGCCGGCTTCGCCCGCCAAGGAGCCAAGGAGAAGCAGCTGTTAAAGGA
GGCAACGCTTTCAACGTGTCATCTTCTGACTCCGGGCCATGATGAGCGGCCAGTACTGGCCCGAGGGC
GACGAGGTCTACCACGCCGAGCTCACCGTGCCCGTCTGCTTGTCCACGGCATGCACGATAAGTTTGTGC
CGGTGGAGGAAGACCAGCGCATGGCCGAGATCCTGCTCCTGGCATTCTGAAGCTCATCGACGAGGGCAG
CCACATGGTGATGCTGGAATGCCTGAGACGGTCAACACGCTGCTCCACGAATTCCTGCTCTGGAGGCC
GAGCCCTGCCCAAGGCTCTACCGAGCCACTGCCGGCGCTCCAGAAGACAAGAAG

ACGCGTACGCGGGCGCTCGAGCAGAACTCATCTCAGAAGAGGATCTGGCAGCAAATGATATCCTGGATT
ACAAGGATGACGACGATAAGGTTTAA



[View online »](#)

Protein Sequence: >RC203206 protein sequence
Red=Cloning site Green=Tags(s)

MLTGVTDGIFCCLLGTPPNAVGPLESVESSDGYTFVEVKPGRVLRVKHAGPAPAAAPPPSSASSDAAQG
 DL SGLVRCQRRITVYRNGRLLVENLGRAPRADLLHGQNGSGEPPAALEVELADPAGSDGRLAPGSAGSGS
 GSGSGGRRRRARRPKRTIHIDCEKRITSCKGAQADVLLFFIHGVGGLAIWKEQLDFFVRLGYEVVAPDL
 AGHGASSAPQVAAAYTFYALAEDMRAIFKRYAKKRNVLIGHSYGVSFCTFLAHEYDPLVHKVIMINGGGP
 TALEPSFCSIFNMPTCVLHCLSPCLAWSFLKAGFARQGAKEKQLLKEGNAFNVSSFVLRAMMSGQYWPEG
 DEVYHAELTVPVLLVHGMHDKFVPVEEDQRMAEILLLAFLLKIDEGSHMVMLECPETVNTLLHEFLLWEP
 EPSPKALPEPLAPPEDKK

TRTRPLEQKLISEEDLAANDILDYKDDDDKV

Chromatograms: https://cdn.origene.com/chromatograms/mk6269_e12.zip

Restriction Sites: SgfI-MluI

Cloning Scheme:



ACCN: NM_024527

ORF Size: 1317 bp

OTI Disclaimer: The molecular sequence of this clone aligns with the gene accession number as a point of reference only. However, individual transcript sequences of the same gene can differ through naturally occurring variations (e.g. polymorphisms), each with its own valid existence. This clone is substantially in agreement with the reference, but a complete review of all prevailing variants is recommended prior to use. [More info](#)

OTI Annotation: This clone was engineered to express the complete ORF with an expression tag. Expression varies depending on the nature of the gene.

Components: The ORF clone is ion-exchange column purified and shipped in a 2D barcoded Matrix tube containing 10ug of transfection-ready, dried plasmid DNA (reconstitute with 100 ul of water).

Reconstitution Method:

1. Centrifuge at 5,000xg for 5min.
2. Carefully open the tube and add 100ul of sterile water to dissolve the DNA.
3. Close the tube and incubate for 10 minutes at room temperature.
4. Briefly vortex the tube and then do a quick spin (less than 5000xg) to concentrate the liquid at the bottom.
5. Store the suspended plasmid at -20°C. The DNA is stable for at least one year from date of shipping when stored at -20°C.

RefSeq: [NM_024527.5](#)

RefSeq Size: 2114 bp

RefSeq ORF: 1320 bp

Locus ID: 79575

UniProt ID: [Q96L13](#)

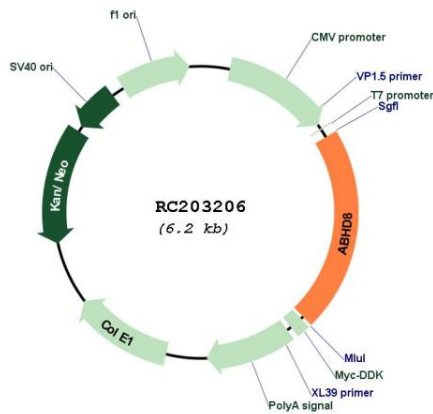
Cytogenetics: 19p13.11

Domains: abhydrolase

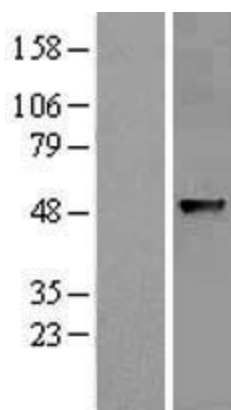
MW: 47.3 kDa

Gene Summary: This gene is upstream of, and in a head-to-head orientation with the gene for the mitochondrial ribosomal protein L34. The predicted protein contains alpha/beta hydrolase fold and secretory lipase domains. [provided by RefSeq, Jul 2008]

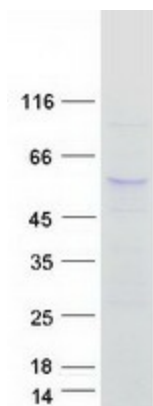
Product images:



Circular map for RC203206



Western blot validation of overexpression lysate (Cat# [LY411270]) using anti-DDK antibody (Cat# [TA50011-100]). Left: Cell lysates from untransfected HEK293T cells; Right: Cell lysates from HEK293T cells transfected with RC203206 using transfection reagent MegaTran 2.0 (Cat# [TT210002]).



Coomassie blue staining of purified ABHD8 protein (Cat# [TP303206]). The protein was produced from HEK293T cells transfected with ABHD8 cDNA clone (Cat# RC203206) using MegaTran 2.0 (Cat# [TT210002]).