

## Product datasheet for **RC203205**

### **HES6 (NM\_018645) Human Tagged ORF Clone**

#### Product data:

Product Type:	Expression Plasmids
Product Name:	HES6 (NM_018645) Human Tagged ORF Clone
Tag:	Myc-DDK
Symbol:	HES6
Synonyms:	bHLHb41; bHLHc23; C-HAIRY1; HES-6
Vector:	pCMV6-Entry (PS100001)
E. coli Selection:	Kanamycin (25 ug/mL)
Cell Selection:	Neomycin
ORF Nucleotide Sequence:	>RC203205 ORF sequence Red=Cloning site Blue=ORF Green=Tags(s)

TTTTGTAATACGACTCACTATAGGGCGGCCGGAATTCGTCGACTGGATCCGGTACCGAGGAGATCTGCC  
GCC**GCGATCGCC**

ATGGCGCCACCCGCGGCCTGGCCGGGACCGTGTGGCCGTGAGGATGAGGACGGCTGGGAGACGCGAG  
GGGACCGCAAGGCCCGGAAGCCCTGGTGGAGAAGAAGCGGCGCGCGGATCAACGAGAGCCTGCAGGA  
GCTGCGGCTGCTGCTGGCGGGCGCGAGGTGCAGGCCAAGCTGGAGAACCGGAAGTCTGGAGCTGACG  
GTGCGGCGGGTCCAGGGTGTGCTGCGGGGCCGGGCGCGGAGCGCGAGCAGCTGCAGGCGGAAGCGAGCG  
AGCGCTTCGCTGCCGGCTACATCCAGTGCATGCACGAGGTGCACACGTTTCGTGTCCACGTGCCAGGCCAT  
CGACGCTACCGTTCGCTGCCGAGCTCCTGAACCATCTGCTCGAGTCCATGCCGCTGCGTGAGGGCAGCAGC  
TTCCAGGATCTGCTGGGGACGCGCTGGCGGGGCCACCTAGAGCCCTGGACGGAGTGGCTGGCCTGCGG  
GGGGCGCTCCGGGATCCCAATACCCAGCCCCCGGGTCTGGGGACGACCTGTGCTCCGACCTGGAGGA  
GGCCCCTGAGGCTGAAGTGAAGTCAAGGCTCCTGCTGAGGGGCCGACTTGGTGCCCGCAGCCCTGGGCAGC  
CTGACCACAGCCAAATTGCCCGGAGTGTCTGGAGGCCTTGG

**ACGCGT**ACGCGGCGCTCGAGCAGAACTCATCTCAGAAGAGGATCTGGCAGCAAATGATATCCTGGATT  
ACAAGGATGACGACGATAAGGTTTAA



[View online »](#)

**Protein Sequence:** >RC203205 protein sequence  
 Red=Cloning site Green=Tags(s)

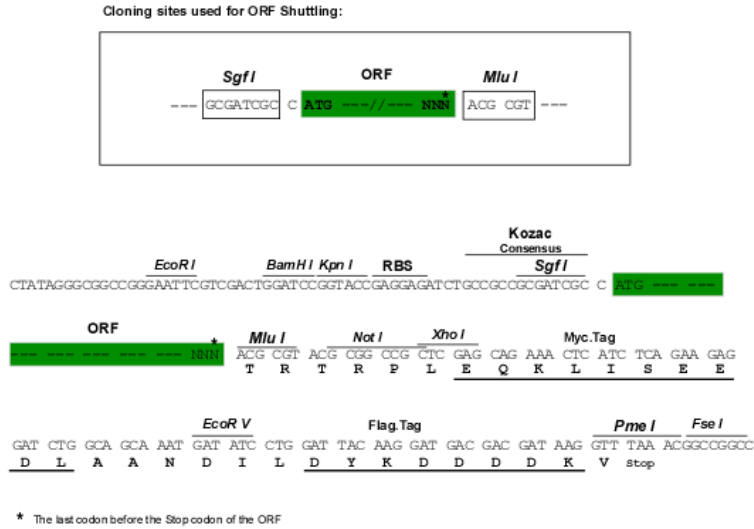
MAPPAAPGRDRVGREDEDGWETRGRDKARKPLVEKRRRARNESLQELRLLLAGAEVQAKLENAEVLELT  
 VRRVQGVLRGRAREREQLQAEASERFAAGYIQCMEVHTFVSTCQAI DATVAAELLNHLLSMPREGSS  
 FQDLLGDALAGPPRAGRSGWPAGGAPGSPFPSPPGPGDDLCSDL EEAPEAELSQAPAE GPDLPVPAALGS  
 LTTAQIARSVWRPW

TRTRPLEQKLISEEDLAANDILDYKDDDDKV

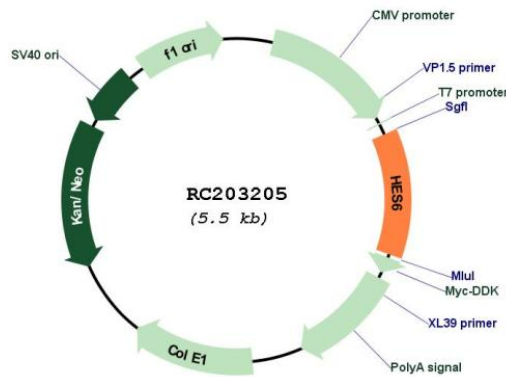
**Chromatograms:** [https://cdn.origene.com/chromatograms/mk6214\\_c01.zip](https://cdn.origene.com/chromatograms/mk6214_c01.zip)

**Restriction Sites:** SgfI-MluI

**Cloning Scheme:**

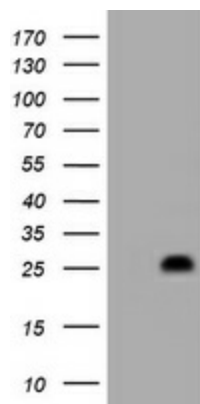


**Plasmid Map:**

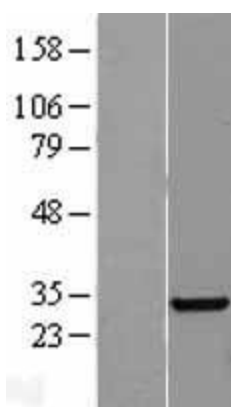


**ACCN:** NM\_018645  
**ORF Size:** 672 bp

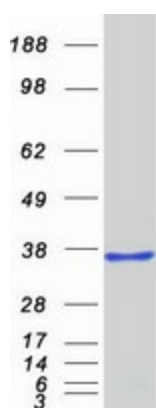
<b>OTI Disclaimer:</b>	The molecular sequence of this clone aligns with the gene accession number as a point of reference only. However, individual transcript sequences of the same gene can differ through naturally occurring variations (e.g. polymorphisms), each with its own valid existence. This clone is substantially in agreement with the reference, but a complete review of all prevailing variants is recommended prior to use. <a href="#">More info</a>
<b>OTI Annotation:</b>	This clone was engineered to express the complete ORF with an expression tag. Expression varies depending on the nature of the gene.
<b>Components:</b>	The ORF clone is ion-exchange column purified and shipped in a 2D barcoded Matrix tube containing 10ug of transfection-ready, dried plasmid DNA (reconstitute with 100 ul of water).
<b>Reconstitution Method:</b>	<ol style="list-style-type: none"><li>1. Centrifuge at 5,000xg for 5min.</li><li>2. Carefully open the tube and add 100ul of sterile water to dissolve the DNA.</li><li>3. Close the tube and incubate for 10 minutes at room temperature.</li><li>4. Briefly vortex the tube and then do a quick spin (less than 5000xg) to concentrate the liquid at the bottom.</li><li>5. Store the suspended plasmid at -20°C. The DNA is stable for at least one year from date of shipping when stored at -20°C.</li></ol>
<b>RefSeq:</b>	<a href="#">NM_018645.6</a>
<b>RefSeq Size:</b>	1470 bp
<b>RefSeq ORF:</b>	675 bp
<b>Locus ID:</b>	55502
<b>UniProt ID:</b>	<a href="#">Q96HZ4</a>
<b>Cytogenetics:</b>	2q37.3
<b>Domains:</b>	HLH
<b>Protein Families:</b>	Druggable Genome, Transcription Factors
<b>MW:</b>	24.1 kDa
<b>Gene Summary:</b>	This gene encodes a member of a subfamily of basic helix-loop-helix transcription repressors that have homology to the Drosophila enhancer of split genes. Members of this gene family regulate cell differentiation in numerous cell types. The protein encoded by this gene functions as a cofactor, interacting with other transcription factors through a tetrapeptide domain in its C-terminus. Alternatively spliced transcript variants encoding different isoforms have been described.[provided by RefSeq, Dec 2008]

**Product images:**


HEK293T cells were transfected with the pCMV6-ENTRY control (Cat# [PS100001], Left lane) or pCMV6-ENTRY HES6 (Cat# RC203205, Right lane) cDNA for 48 hrs and lysed. Equivalent amounts of cell lysates (5 ug per lane) were separated by SDS-PAGE and immunoblotted with anti-HES6 (Cat# [TA800716]). Positive lysates [LY412988] (100ug) and [LC412988] (20ug) can be purchased separately from OriGene.



Western blot validation of overexpression lysate (Cat# [LY412988]) using anti-DDK antibody (Cat# [TA50011-100]). Left: Cell lysates from untransfected HEK293T cells; Right: Cell lysates from HEK293T cells transfected with RC203205 using transfection reagent MegaTran 2.0 (Cat# [TT210002]).



Coomassie blue staining of purified HES6 protein (Cat# [TP303205]). The protein was produced from HEK293T cells transfected with HES6 cDNA clone (Cat# RC203205) using MegaTran 2.0 (Cat# [TT210002]).