

## Product datasheet for **RC203203**

### SC65 (P3H4) (NM\_006455) Human Tagged ORF Clone

#### Product data:

|                           |  |
|---------------------------|--|
| Product Type:             | Expression Plasmids                            |
| Product Name:             | SC65 (P3H4) (NM_006455) Human Tagged ORF Clone |
| Tag:                      | Myc-DDK  |
| Symbol:                   | SC65   |
| Synonyms:                 | LEPREL4; NO55; NOL55; SC65                     |
| Mammalian Cell Selection: | Neomycin                                       |
| Vector:                   | pCMV6-Entry (PS100001)                         |
| E. coli Selection:        | Kanamycin (25 ug/mL)                           |



[View online »](#)

**ORF Nucleotide Sequence:**

>RC203203 representing NM\_006455  
 Red=Cloning site Blue=ORF Green=Tags(s)

TTTTGTAATACGACTCACTATAGGGCGGCCGGAATTCGTCGACTGGATCCGGTACCGAGGAGATCTGCC  
 GCC**CGATCGCC**

ATGGCTCGGGTGGCGTGGGGCTGCTGTGGTTGCTGCTGGGCAGCGCCGGGGCGCAGTACGAGAAGTACA  
 GCTTCCGGGGCTTCCCGCCGAGGACCTGATGCCGCTGGCCGCGCGTACGGGCAGCTCTGGAGCAGTA  
 CGAGGGAGAGAGCTGGCGGAGAGCGCGCTACCTGGAGGCGCGCTGCGGCTGCACCGCTCCTGCGC  
 GACAGCGAGGCCCTTCTGCCACGCCAACTGCAGCGGCCCGCGCCGCGGCAAGCCCGATCCCGACGGCG  
 GCCGCGCAGACGAGTGGGCTGCGAGCTGCGGCTCTTCGCGCGCTCTGGAGCGAGCCGCTGCTGCG  
 GCGCTGCAAGCGGACGCTGCCCGCTTCCAGGTGCCCTACCCGCCGCGCAGCTGCTGCGTGACTTCCAG  
 AGCCGCTGCCCTACCAGTACCTGCACTACGCGCTGTTCAAGGCTAACCGCTGGAGAAGGCGGTGGCGG  
 CGGCTACACCTTCTCCAGAGGAACCCGAAGCAGAGCTGACCGCAAGTATCTCAACTACTATCAGGG  
 GATGCTGGACGTGCGCGACGAGTCCCTCACGGACCTAGAGGCCAGCCCTACGAGGCCGTGTTCTCCGG  
 GCTGTGAAGCTCTACAACAGCGGGGATTTCCGACGAGCAGCGAGGACATGGAGCGGGCCTGTGCAGAGT  
 ACCTGGCAGTCTTTGCCCGGTGCCTGGCCGGCTGTGAAGGGGCCATGAGCAGGTGGACTTCAAGGACTT  
 CTACCCGGCCATAGCAGATCTCTTTGCAGAGTCCCTGCAGTGCAAGTGGACTGTGAGGCCAATTTGACC  
 CCCAATGTGGGTGGTACTTCGTGGACAAGTTCGTGGCCACCATGTACCACTACCTGCAGTTTGCCTACT  
 ATAAGTTGAATGATGTGCGCCAGGCTGCCCGCAGCGCCGCGCAGCTACATGCTCTTCGACCCCAAGGACAG  
 CGTCATGCAGCAGAACCTGGTGTATTACCGTTCCACCGGGCTCGCTGGGGCCTGGAAGAGGAGGACTTC  
 CAGCCCCGGGAGGAGGCCATGCTCTACCAACCCAGACCGCCGAGCTGCGGGAGCTGCTGGAGTTACCC  
 ACATGTACCTGCAGTCAGATGATGAGTGGAGCTGGAGGAGACAGAACCAGCCCTGGAGCCTGAGGATGC  
 CCTATCTGACGCGAGTTTGAGGGGGAGGGTACTACGAGGAGGCATGTATGCTGACTGGTGGCAGGAG  
 CCGGATGCCAAGGTTGACGAGGCCGAGGCTGAGCCAGAGCCTGAACTCGCA

**ACGCGT**ACGCGGCCGCTCGAGCAGAACTCATCTCAGAAGAGGATCTGGCAGCAAATGATATCCTGGATT  
 ACAAGGATGACGACGATAAGGTTTAA

**Protein Sequence:**

>RC203203 representing NM\_006455  
 Red=Cloning site Green=Tags(s)

MARVAWGLLWLLLSAGAQYKYSFRGFPPEDLMPLAAAIGHALEQYEGESWRESARYLEAALRLHRLLR  
 DSEAFCHANCSGPAPAAKPPDPDGGRADEWACELRLFGRVLERAACLRCKRTLPAFQVPYPPRQLLRDFQ  
 SRLPYQLHYALFKANRLEKAVAAAYTFLQRNPKHEL TAKYLNYYQGMLDVADESLTDLEAQPYEAVFLR  
 AVKLYNSGDFRSSTEDMERALSEYLAVFARCLAGCEGAHEQVDFKDFYPAIADLFAESLQCKVDCEANLT  
 PNVGGYFVDFKQVATMYHYLQFAYYKLNDRQAARSAAASYMLFDPKDSVMQQNLVYYRFRHARWGLEEDF  
 QPREEAML YHNQTAELELLEFTHMYLQSDDEMELEETEPPLEPEDALSDAEFEGEGDYEEGMYADWWQE  
 PDAKGDEAEAEPEPELA

**TR**TRPLEQKLISEEDLAANDILDYKDDDDKV

**Chromatograms:**

[https://cdn.origene.com/chromatograms/mk8112\\_e11.zip](https://cdn.origene.com/chromatograms/mk8112_e11.zip)

**Restriction Sites:**

Sgfl-Mlul

**Cloning Scheme:**


**ACCN:** NM\_006455

**ORF Size:** 1311 bp

**OTI Disclaimer:** The molecular sequence of this clone aligns with the gene accession number as a point of reference only. However, individual transcript sequences of the same gene can differ through naturally occurring variations (e.g. polymorphisms), each with its own valid existence. This clone is substantially in agreement with the reference, but a complete review of all prevailing variants is recommended prior to use. [More info](#)

**OTI Annotation:** This clone was engineered to express the complete ORF with an expression tag. Expression varies depending on the nature of the gene.

**Components:** The ORF clone is ion-exchange column purified and shipped in a 2D barcoded Matrix tube containing 10ug of transfection-ready, dried plasmid DNA (reconstitute with 100 ul of water).

**Reconstitution Method:**

1. Centrifuge at 5,000xg for 5min.
2. Carefully open the tube and add 100ul of sterile water to dissolve the DNA.
3. Close the tube and incubate for 10 minutes at room temperature.
4. Briefly vortex the tube and then do a quick spin (less than 5000xg) to concentrate the liquid at the bottom.
5. Store the suspended plasmid at -20°C. The DNA is stable for at least one year from date of shipping when stored at -20°C.

**RefSeq:** [NM\\_006455.3](#)

**RefSeq Size:** 2619 bp

**RefSeq ORF:** 1314 bp

**Locus ID:** 10609

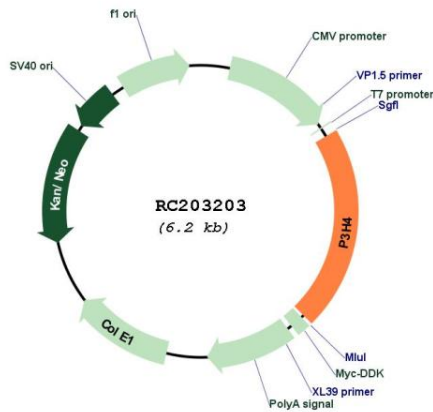
**UniProt ID:** [Q92791](#)

**Cytogenetics:** 17q21.2

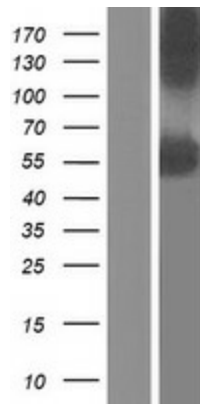
MW: 50.2 kDa

**Gene Summary:** This nucleolar protein was first characterized because it was an autoantigen in cases on interstitial cystitis. The protein, with a predicted molecular weight of 50 kDa, appears to be localized in the particulate compartment of the interphase nucleolus, with a distribution distinct from that of nucleolar protein B23. During mitosis it is associated with chromosomes. [provided by RefSeq, Jul 2008]

**Product images:**



Circular map for RC203203



Western blot validation of overexpression lysate (Cat# [LY416639]) using anti-DDK antibody (Cat# [TA50011-100]). Left: Cell lysates from untransfected HEK293T cells; Right: Cell lysates from HEK293T cells transfected with RC203203 using transfection reagent MegaTran 2.0 (Cat# [TT210002]).