

Product datasheet for **RC203202**

EEF1D (NM_001960) Human Tagged ORF Clone

Product data:

Product Type:	Expression Plasmids
Product Name:	EEF1D (NM_001960) Human Tagged ORF Clone
Tag:	Myc-DDK
Symbol:	EEF1D
Synonyms:	EF-1D; EF1D; FP1047
Mammalian Cell Selection:	Neomycin
Vector:	pCMV6-Entry (PS100001)
E. coli Selection:	Kanamycin (25 ug/mL)



[View online »](#)

ORF Nucleotide
Sequence:

>RC203202 ORF sequence
Red=Cloning site Blue=ORF Green=Tags(s)

TTTTGTAATACGACTCACTATAGGGCGGCCGGGAATTCGTCGACTGGATCCGGTACCGAGGAGATCTGCC
GCCGCGATCGCC

ATGAGGAGCGGGAAGGCCTCCTGCACCCTGGAGACCGTGTGGAAGACAAGCACAAGTATGAGGAGGCCG
AGCGGCGCTTCTACGAACACGAGGCCACACAGGCGGCCGCTCCGCCAGCAGCTGCCAGCCGAGGGGCC
AGCCATGAATGGGCCCGCCAGGACGACCTGAGGACGCTGATGAGGCGGAAGCCCTGACGGCGGCAGC
AGGCGTGATCCCAGGAAGAGCCAGGACAGCAGGAAGCCCTGCAGAAAAAGAGGAAGCGCTCCCCAAGA
GCGGGCTCGGCCCGGGACCTGGCCCTCCTGGCCCTCTCGGCCGAACGTGTGTGGCTGGACAAGTCACT
TTTCGACCAGGCAGAGAGCTCCTACCGCCAGAAGCTGGCAGATGTGGCTGCCAGGCAGCCTGGCCCTCT
GCCTTGGCCCTTGGGGTCTCTGCACCCATGGAACCAGGTGGCCTGCCACCACGTGACCTGGGGATCT
GGGTCAACAAGTCTCCTTCGACCAGGCTGAGCGGGCTTCGTGGAGTGGTCTCAGGCCCTGTTGCTGGC
CCCCGAGGGCAGCCGAGGACGGGACTCCCAACACAGGCCAGCAGGTGGCCGTCGCCGACTGGCCAC
CAGCCCAGCCACCGGTCAATGGCCAGCCCCGCTGGGCAGCCTGCAGGCACTGGTTCGGGAGGTGTGGC
TGGAGAAGCCCCGTATGATGCAGCCGAGAGGGGCTTCTACGAGGCCCTGTTGACGGCCATCCCCAGG
GAAGGTGCCTGCAAGAGCGAGCCGGCCTGGCCGAGGGTGCCTGGCGGGGGCCGAGAGACCGGGGGG
CGCAACATCTTAGGGAACAAGCGGGCGGGCTGCGACGGGCCGATGGGGAGGCCCTCTGCCTTGCCT
ACTGTTACTTCTGCAGAAGGATGCAGAGGCCCTGGCTCAGCAAGCCTGCCTACGACAGCGCCGAGTG
CCGCCACCACGCTGCCGAGGCCCTGCGTGTGGCCTGGTGCCTCGAAGCTGCCTCCCTGTCTACCGACCC
GGTCTCGGTCTGGCCTGTCCGTGTCCAGCCTGAGACCCAACAGAAAAATGGCTACAACTTCTAGCAC
ATGAGAAGATCTGGTTCGACAAGTTCAAATATGACGACGCAGAAAGGAGATTCTACGAGCAGATGAACGG
GCCTGTGGCAGGTGCCTCCCGCCAGGAGAACGGCGCCAGCGTGATCCTCCGTGACATTGCGAGAGCCAGA
GAGAACATCCAGAAATCCCTGGCTGGAAGCTCAGGCCCGGGGCTCCAGCGGCACCAGCGGAGACCAG
GTGAGCTCGTCCGATTGCCAGTCTGGAAGTGGAGAACCAGAGTCTGCGTGGCGTGGTACAGGAGCT
GCAGCAGGCCATCTCAAGCTGGAGGCCGGCTGAACGTGCTGGAGAAGAGCTCGCTGGCCACCGGGCC
ACGGCCCCACAGACCAGCACGTATCTCCATGCGCCAAGTGGAGCCCCAGCCAAGAAGCCAGCCACAC
CAGCAGAGGATGACGAGGATGATGACATTGACCTGTTTGGCAGTGACAATGAGGAGGAGGACAAGGAGGC
GGCACAGCTGCGGAGGAGCGGCTACGGCAGTACGCGGAGAAGAAGGCCAAGAAGCCTGCACTGGTGGCC
AAGTCTCCATCCTGCTGGATGTCAAGCCTTGGGATGATGAGACGGACATGGCCAGCTGGAGGCCTGTG
TGCCTCTATCCAGCTGGACGGGCTGGTCTGGGGGCTTCCAAGCTGGTGCCTGGGCTACGGTATCCG
GAAGCTACAGATTCAAGTGTGTGGTGGAGGACGACAAGGTGGGGACAGACTTGCTGGAGGAGGAGATCACC
AAGTTTGGAGGACAGTGCAGAGTGTGCATATCGCAGCTTTCAACAAGATC

ACGCGTACGCGGCCGCTCGAGCAGAACTCATCTCAGAAGAGGATCTGGCAGCAAATGATATCCTGGATT
ACAAGGATGACGACGATAAGGTTTAA

Reconstitution Method:

1. Centrifuge at 5,000xg for 5min.
2. Carefully open the tube and add 100ul of sterile water to dissolve the DNA.
3. Close the tube and incubate for 10 minutes at room temperature.
4. Briefly vortex the tube and then do a quick spin (less than 5000xg) to concentrate the liquid at the bottom.
5. Store the suspended plasmid at -20°C. The DNA is stable for at least one year from date of shipping when stored at -20°C.

Note: Plasmids are not sterile. For experiments where strict sterility is required, filtration with 0.22um filter is required.

RefSeq Size: 1276 bp

RefSeq ORF: 846 bp

Locus ID: 1936

UniProt ID: [P29692](#)

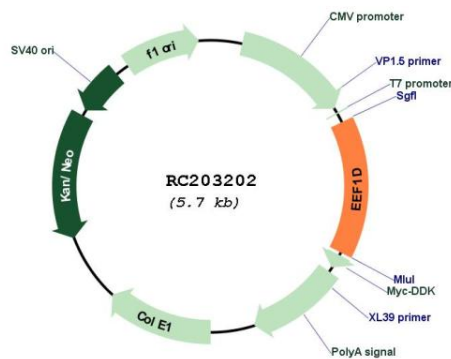
Cytogenetics: 8q24.3

Domains: EF1BD

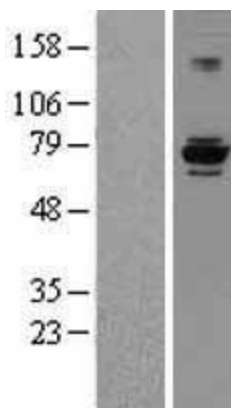
MW: 71.4 kDa

Gene Summary: This gene encodes a subunit of the elongation factor-1 complex, which is responsible for the enzymatic delivery of aminoacyl tRNAs to the ribosome. This subunit, delta, functions as guanine nucleotide exchange factor. It is reported that following HIV-1 infection, this subunit interacts with HIV-1 Tat. This interaction results in repression of translation of host cell proteins and enhanced translation of viral proteins. Several alternatively spliced transcript variants encoding multiple isoforms have been found for this gene. Related pseudogenes have been defined on chromosomes 1, 6, 7, 9, 11, 13, 17, 19.[provided by RefSeq, Aug 2010]

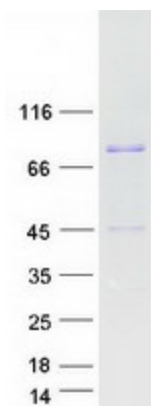
Product images:



Circular map for RC203202



Western blot validation of overexpression lysate (Cat# [LY427135]) using anti-DDK antibody (Cat# [TA50011-100]). Left: Cell lysates from untransfected HEK293T cells; Right: Cell lysates from HEK293T cells transfected with [RC225387] using transfection reagent MegaTran 2.0 (Cat# [TT210002]).



Coomassie blue staining of purified EEF1D protein (Cat# [TP303202]). The protein was produced from HEK293T cells transfected with EEF1D cDNA clone (Cat# RC203202) using MegaTran 2.0 (Cat# [TT210002]).