

## Product datasheet for **RC203199**

### COLEC11 (NM\_199235) Human Tagged ORF Clone

#### Product data:

|                           |   |
|---------------------------|---|
| Product Type:             | Expression Plasmids   |
| Product Name:             | COLEC11 (NM_199235) Human Tagged ORF Clone                        |
| Tag:                      | Myc-DDK   |
| Symbol:                   | COLEC11   |
| Synonyms:                 | 3MC2; CL-11; CL-K1-I; CL-K1-II; CL-K1-IIa; CL-K1-IIb; CLK1        |
| Mammalian Cell Selection: | Neomycin  |
| Vector:                   | pCMV6-Entry (PS100001)  |
| E. coli Selection:        | Kanamycin (25 ug/mL)  |
| ORF Nucleotide Sequence:  | >RC203199 ORF sequence<br>Red=Cloning site Blue=ORF Green=Tags(s) |

TTTTGTAATACGACTCACTATAGGGCGGCCGGAATTCGTCGACTGGATCCGGTACCGAGGAGATCTGCC  
GCC**CGGATCGCC**

ATGACGCCTGCTCTGTGCAGATCCTCGTCCCTGGCCTCAAAGGGGATGCGGGAGAGAAGGGAGACAAAGG  
CGCCCCGGACGGCCTGGAAGAGTCGGCCCCACGGGAGAAAAAGCAGTCACAGCCAGTCGTGACAGCTTC  
TGACATCTCCAAAAGGAAGTGCACCTCGTCCTTTGTAGAAATGGGATCACAGGGAGACATGGGGACAAA  
GGACAGAAAGGCAGTGTGGTTCGTATGAAAAATTGGTCCATTGGCTCTAAAGGTGAGAAAGGAGATT  
CCGGTGACATAGGACCCCTGGTCCTAATGGAGAACCAGGCCTCCCATGTGAGTGCAGCCAGCTGCGCAA  
GGCCATCGGGGAGATGGACAACCAGTCTCTCAGCTGACCAGCGAGCTCAAGTTCATCAAGAATGCTGTC  
GCCGGTGTGCGCGAGACGGAGAGCAAGATCTACCTGCTGGTGAAGGAGGAGAAGCGCTACCGGGACGCC  
AGCTGTCTGCCAGGGCCGCGGGGGCACGCTGAGCATGCCAAGGACGAGGCTGCCAATGGCCTGATGGC  
CGCATACCTGGCGCAAGCCGGCCTGGCCCGTGTCTTCAATCGGCATCAACGACCTGGAGAAGGAGGGCGCC  
TTCGTGTACTCTGACCACTCCCCATGCGGACCTTCAACAAGTGGCGCAGCGGTGAGCCCAACAATGCT  
ACGACGAGGAGGACTGCGTGGAGATGGTGGCCTCGGGCGGCTGGAACGACGTGGCCTGCCACACCACCAT  
GTACTTCATGTGTGAGTTTGACAAGGAGAACATG

**ACGCGT**ACGCGGCCGCTCGAGCAGAAACTCATCTCAGAAGAGGATCTGGCAGCAAATGATATCCTGGATT  
ACAAGGATGACGACGATAAGGTTTAA



[View online »](#)

**Protein Sequence:** >RC203199 protein sequence  
 Red=Cloning site Green=Tags(s)

MTPALCRSSSLASKGMRERRETKAPPDGLLEESAPREKKQSQPVVTASDISKRKCTSSFVEMGSQGDMDGK  
 GQKGSVGRHGKIGPIGSKGEKGDSDIGPPGPNGEPGLPCECSQLRKAIGEMDNQVSQLTSELKFIKNAV  
 AGVRETESKIYLLVKEEKRYADAQLSCQGRGGTLSMPKDEAANGLMAAYLAQAGLARVFIGINDLEKEGA  
 FVYSDHSPMRTFNKWRSGEPNNAAYDEEDCEMVASGGWNDVACHTTMYFMCFDKENM

TRTRPLEQKLISEEDLAANDILDYKDDDDKV

**Chromatograms:** [https://cdn.origene.com/chromatograms/mk6557\\_a05.zip](https://cdn.origene.com/chromatograms/mk6557_a05.zip)

**Restriction Sites:** SgfI-MluI

**Cloning Scheme:**

Cloning sites used for ORF Shuttling:



\* The last codon before the Stop codon of the ORF

**ACCN:** NM\_199235

**ORF Size:** 804 bp

**OTI Disclaimer:** The molecular sequence of this clone aligns with the gene accession number as a point of reference only. However, individual transcript sequences of the same gene can differ through naturally occurring variations (e.g. polymorphisms), each with its own valid existence. This clone is substantially in agreement with the reference, but a complete review of all prevailing variants is recommended prior to use. [More info](#)

**OTI Annotation:** This clone was engineered to express the complete ORF with an expression tag. Expression varies depending on the nature of the gene.

**Components:** The ORF clone is ion-exchange column purified and shipped in a 2D barcoded Matrix tube containing 10ug of transfection-ready, dried plasmid DNA (reconstitute with 100 ul of water).

**Reconstitution Method:**

1. Centrifuge at 5,000xg for 5min.
2. Carefully open the tube and add 100ul of sterile water to dissolve the DNA.
3. Close the tube and incubate for 10 minutes at room temperature.
4. Briefly vortex the tube and then do a quick spin (less than 5000xg) to concentrate the liquid at the bottom.
5. Store the suspended plasmid at -20°C. The DNA is stable for at least one year from date of shipping when stored at -20°C.

**RefSeq:** [NM\\_199235.3](#)

**RefSeq Size:** 1784 bp

**RefSeq ORF:** 807 bp

**Locus ID:** 78989

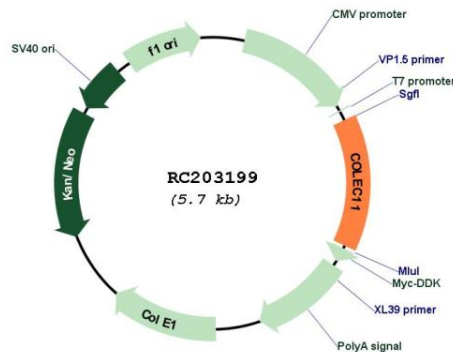
**UniProt ID:** [Q9BWP8](#)

**Cytogenetics:** 2p25.3

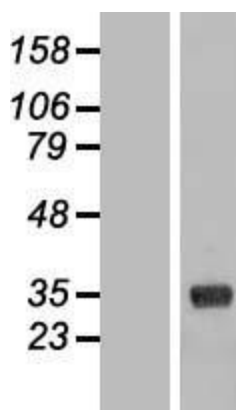
**MW:** 29 kDa

**Gene Summary:** This gene encodes a member of the collectin family of C-type lectins that possess collagen-like sequences and carbohydrate recognition domains. Collectins are secreted proteins that play important roles in the innate immune system by binding to carbohydrate antigens on microorganisms, facilitating their recognition and removal. The encoded protein binds to multiple sugars with a preference for fucose and mannose. Mutations in this gene are a cause of 3MC syndrome-2. Alternatively spliced transcript variants encoding multiple isoforms have been observed for this gene. [provided by RefSeq, Dec 2011]

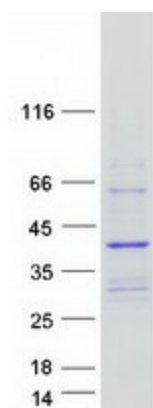
## Product images:



Circular map for RC203199



Western blot validation of overexpression lysate (Cat# [LY404629]) using anti-DDK antibody (Cat# [TA50011-100]). Left: Cell lysates from untransfected HEK293T cells; Right: Cell lysates from HEK293T cells transfected with RC203199 using transfection reagent MegaTran 2.0 (Cat# [TT210002]).



Coomassie blue staining of purified COLEC11 protein (Cat# [TP303199]). The protein was produced from HEK293T cells transfected with COLEC11 cDNA clone (Cat# RC203199) using MegaTran 2.0 (Cat# [TT210002]).