

Product datasheet for RC203192

YIPF5 (NM_030799) Human Tagged ORF Clone

Product data:

Product Type:	Expression Plasmids
Product Name:	YIPF5 (NM_030799) Human Tagged ORF Clone
Tag:	Myc-DDK
Symbol:	YIPF5
Synonyms:	FinGER5; SB140; SMAP-5; SMAP5; YIP1A
Vector:	pCMV6-Entry (PS100001)
E. coli Selection:	Kanamycin (25 ug/mL)
Cell Selection:	Neomycin
ORF Nucleotide Sequence:	>RC203192 ORF sequence Red=Cloning site Blue=ORF Green=Tags(s)

TTTTGTAATACGACTCACTATAGGGCGCCGGAATTCGTCGACTGGATCCGGTACCGAGGAGATCTGCC
GCCGCGATCGCC

ATGTCAGGCTTTGAAAACCTAAACACGGATTTCTACCAGACAAGTTACAGCATCGATGATCAGTCACAGC
AGTCCTATGATTATGGAGGAAGTGGAGGACCCTATAGCAAACAGTATGCTGGCTATGACTATTCGCAGCA
AGGCAGATTTGCCCTCCAGACATGATGCAGCCACAACAGCCATACACCGGGCAGATTTACCAGCCAAC
CAGGCATATACTCCAGCTTCACCTCAGCCTTTCTATGGAACAACCTTTGAGGATGAGCCACCTTTATTAG
AAGAGTTAGGTATCAATTTTGACCACATCTGGCAAAAAACACTAACAGTATTACATCCGTTAAAAGTAGC
AGATGGCAGCATCATGAATGAAACTGATTTGGCAGGTCCAATGGTTTTTGCCTTGCTTTGGAGCCACA
TTGCTACTGGCTGGCAAAATCCAGTTTGGCTATGTATACGGGATCAGTGAATGGATGTCTAGGAATGT
TTTGTATTAACCTAATGAGTATGACAGGTGTTTCATTTGGTTGTGTGGCAAGTGCCTTGGATATTG
TCTTCTGCCATGATCCTACTTCCAGCTTTCAGTGATATTTCTTTCGCAAGGAATGGTAGGAATCATT
CTCACTGCTGGGATTATGGATGGTGTAGTTTTCTGCTTCCAAAATATTTATTTCTGCATTAGCCATGG
AAGGACAGCAACTTTTAGTAGCATATCCTTGCCTTTGTTATATGGAGTCTTGCCTGATTTCCGTCTT
T

ACGCGTACGCGGCCGCTCGAGCAGAAAACCTCATCTCAGAAGAGGATCTGGCAGCAAATGATATCCTGGATT
ACAAGGATGACGACGATAAGGTTTAA



[View online »](#)

Protein Sequence: >RC203192 protein sequence
 Red=Cloning site Green=Tags(s)

MSGFENLNTDFYQTSYSIDDQSQQSYDYGGSGGPYSKQYAGYDYSQQGRFVPPDMMQPQQPYTGQIYQPT
 QAYTPASPQPFYGNFDEPPLLEELGINFDHIWQKTLTVLHPLKVDGSGIMNETLAGPMVFCLAFGAT
 LLLAGKIQFGYVYGISAIGCLGMFCLLNLMSTGVSFGCVASVLGYCLLPMILLSSFVAVIFSLQGMVGII
 LTAGIIGWCSFSASKIFISALAMEGQQLLVAYPCALLYGVFALISVF

TRTRPLEQKLISEEDLAANDILDYKDDDDKV

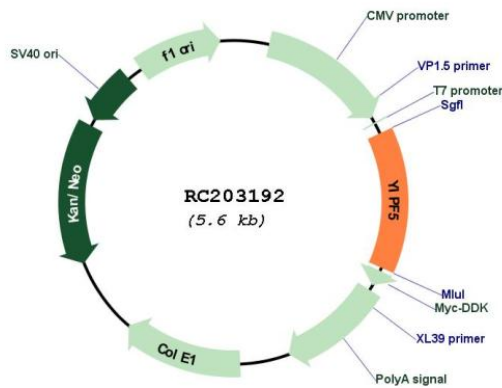
Chromatograms: https://cdn.origene.com/chromatograms/mk6412_h06.zip

Restriction Sites: SgfI-MluI

Cloning Scheme:



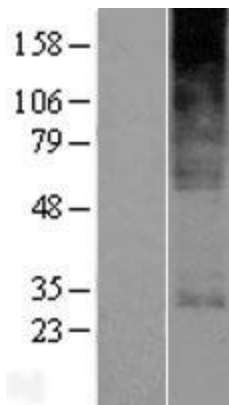
Plasmid Map:



ACCN: NM_030799

ORF Size:	771 bp
OTI Disclaimer:	The molecular sequence of this clone aligns with the gene accession number as a point of reference only. However, individual transcript sequences of the same gene can differ through naturally occurring variations (e.g. polymorphisms), each with its own valid existence. This clone is substantially in agreement with the reference, but a complete review of all prevailing variants is recommended prior to use. More info
OTI Annotation:	This clone was engineered to express the complete ORF with an expression tag. Expression varies depending on the nature of the gene.
RefSeq:	NM_030799.9
RefSeq Size:	3212 bp
RefSeq ORF:	774 bp
Locus ID:	81555
UniProt ID:	Q969M3
Domains:	Yip1
Protein Families:	Transmembrane
MW:	28 kDa
Gene Summary:	Plays a role in transport between endoplasmic reticulum and Golgi.[UniProtKB/Swiss-Prot Function]

Product images:



Western blot validation of overexpression lysate (Cat# [LY422565]) using anti-DDK antibody (Cat# [TA50011-100]). Left: Cell lysates from untransfected HEK293T cells; Right: Cell lysates from HEK293T cells transfected with [RC217870] using transfection reagent MegaTran 2.0 (Cat# [TT210002]).