

Product datasheet for **RC203190**

TMEM141 (NM_032928) Human Tagged ORF Clone

Product data:

Product Type: Expression Plasmids
Product Name: TMEM141 (NM_032928) Human Tagged ORF Clone
Tag: Myc-DDK
Symbol: TMEM141
Vector: pCMV6-Entry (PS100001)
E. coli Selection: Kanamycin (25 ug/mL)
Cell Selection: Neomycin
ORF Nucleotide Sequence: >RC203190 ORF sequence
Red=Cloning site Blue=ORF Green=Tags(s)

TTTTGTAATACGACTCACTATAGGGCGGCCGGAATTCGTCGACTGGATCCGGTACCGAGGAGATCTGCC
GCC**CGATCGCC**

ATGGTGAACCTGGGTCTGTCCCGGTGGACGACGCCGTGGCTGCCAAGCACCCGGGACTCGGGGAGTATG
CCGCATGCCAGTCACACGCCTTCATGAAGGCGTTTTACCTTCGTCACAGGCACCGGCATGGCCTTTGG
CTTGCAGATGTTTCATTTCAGAGGAAGTTCCATACCCTTTGCAGTGGAGCCTCCTAGTGGCCGTGGTTGCA
GGCTCTGTGGTCAGCTACGGGGTACGAGAGTGGAGTCGGAGAAATGCAACAACCTCTGGCTCTTCTGG
AGACCGGGCAGCTCCCCAAAGACAGGAGCACAGATCAGAGAAGC

ACGCGTACGCGGCCGCTCGAGCAGAACTCATCTCAGAAGAGGATCTGGCAGCAAATGATATCCTGGATT
ACAAGGATGACGACGATAAGGTTTAA

Protein Sequence: >RC203190 protein sequence
Red=Cloning site Green=Tags(s)

MVNLGLSRVDDAVAAKHPGLGEYAAQSHAFMKGVFTFVTGTGMAFGLQMF IQRKFPYPLQWLLVAVVA
GSVVSYGVTRVESEKCNLWLFLETGQLPKDRSTDQRS

TRTRPLEQKLI SEEDLAANDILDYKDDDDKV

Chromatograms: https://cdn.origene.com/chromatograms/mk6412_h05.zip

Restriction Sites: SgfI-MluI

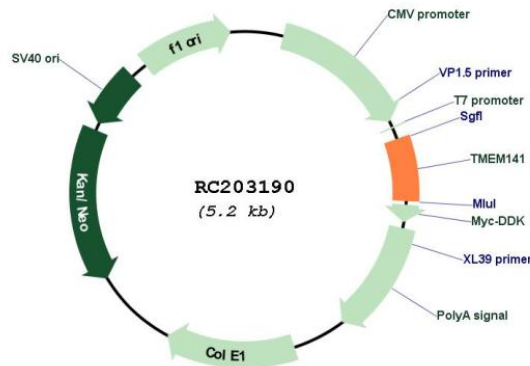


[View online »](#)

Cloning Scheme:



Plasmid Map:

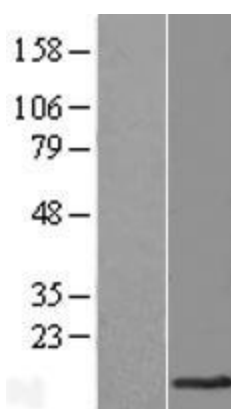


ACCN: NM_032928

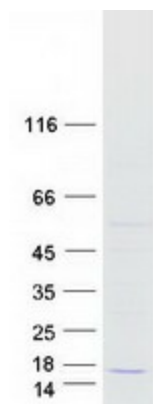
ORF Size: 324 bp

OTI Disclaimer: The molecular sequence of this clone aligns with the gene accession number as a point of reference only. However, individual transcript sequences of the same gene can differ through naturally occurring variations (e.g. polymorphisms), each with its own valid existence. This clone is substantially in agreement with the reference, but a complete review of all prevailing variants is recommended prior to use. [More info](#)

OTI Annotation:	This clone was engineered to express the complete ORF with an expression tag. Expression varies depending on the nature of the gene.
RefSeq:	NM_032928.4
RefSeq Size:	875 bp
RefSeq ORF:	327 bp
Locus ID:	85014
UniProt ID:	Q96L45
Protein Families:	Transmembrane
MW:	11.9 kDa

Product images:

Western blot validation of overexpression lysate (Cat# [LY409873]) using anti-DDK antibody (Cat# [TA50011-100]). Left: Cell lysates from untransfected HEK293T cells; Right: Cell lysates from HEK293T cells transfected with RC203190 using transfection reagent MegaTran 2.0 (Cat# [TT210002]).



Coomassie blue staining of purified TMEM141 protein (Cat# [TP303190]). The protein was produced from HEK293T cells transfected with TMEM141 cDNA clone (Cat# RC203190) using MegaTran 2.0 (Cat# [TT210002]).