

Product datasheet for RC203186

C3Orf34 (CEP19) (NM_032898) Human Tagged ORF Clone

Product data:

Product Type: Expression Plasmids
Product Name: C3Orf34 (CEP19) (NM_032898) Human Tagged ORF Clone
Tag: Myc-DDK
Symbol: CEP19
Synonyms: C3orf34; MOSPGF
Vector: pCMV6-Entry (PS100001)
E. coli Selection: Kanamycin (25 ug/mL)
Cell Selection: Neomycin
ORF Nucleotide Sequence: >RC203186 ORF sequence
Red=Cloning site Blue=ORF Green=Tags(s)

TTTTGTAATACGACTCACTATAGGGCGCCGGAATTCGTCGACTGGATCCGGTACCGAGGAGATCTGCC
GCC**CGGATCGCC**

ATGATGTGCACTGCCAAGAAATGTGGGATTAGGTTTCAGCCTCCAGCTATTATCTTAATCTATGAGAGTG
AAATCAAGGGGAAAATTCGCCAGCGCATTATGCCAGTTTCGAACTTTTCAAAGTTTTTCAGATTGCACCAG
AGCTGCTGAACAATTAAGAATAATCCGCGACACAAGAGTTACCTAGAACAAGTATCCCTGAGGCAGCTA
GAGAAGCTATTAGTTTTTACGAGTTACTTGTCTGGGGCAGAGTCTGGCAGAAACAATGGAACAATTC
AACGGGAAAACAACCATTTGATCCTGAGGAAGACCTGAACAACTAGATGACAAGGAGCTTGCCAAAAGAAA
GAGCATCATGGATGAACTTTTGAGAAAAATCAGAAGAAGAAGGATGATCCAAATTTTGTATGACATT
GAGGTTGAATTTCCACAGGACGATCAACTGCAGTCCTGTGGTGGGACACAGAGTCAGCTGATGAGTTC

ACGCGTACGCGGCCGCTCGAGCAGAAACTCATCTCAGAAGAGGATCTGGCAGCAAATGATATCCTGGATT
ACAAGGATGACGACGATAAGGTTTAA

Protein Sequence: >RC203186 protein sequence
Red=Cloning site Green=Tags(s)

MMCTAKKCGIRFQPPAIIILYSEIKGKIRQRIMPVRNFSKFSDCTRAAEQLKNNPRHKSYLEQVSLRQL
EKLFSLRGLSGQSLAETMEQIQRETTIDPEEDLNKLDKELAKRKSIMDELFEKNQKKKDDPNFVYDI
EVEFPQDDQLQSCGWDTESADEF

TRTRPLEQKLISEEDLAANDILDYKDDDDKV

Chromatograms: https://cdn.origene.com/chromatograms/mk6412_d04.zip

Restriction Sites: SgfI-MluI

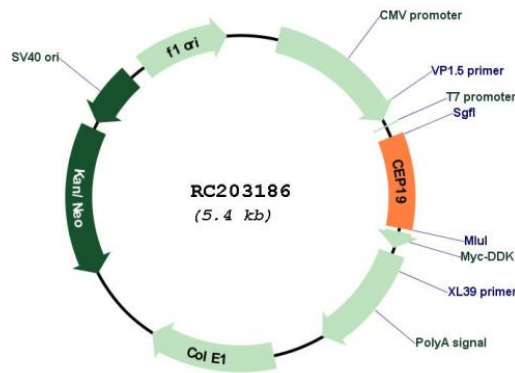


[View online »](#)

Cloning Scheme:



Plasmid Map:



ACCN: NM_032898

ORF Size: 489 bp

OTI Disclaimer: The molecular sequence of this clone aligns with the gene accession number as a point of reference only. However, individual transcript sequences of the same gene can differ through naturally occurring variations (e.g. polymorphisms), each with its own valid existence. This clone is substantially in agreement with the reference, but a complete review of all prevailing variants is recommended prior to use. [More info](#)

OTI Annotation: This clone was engineered to express the complete ORF with an expression tag. Expression varies depending on the nature of the gene.

RefSeq: [NM_032898.5](#)

RefSeq Size: 2216 bp

RefSeq ORF: 492 bp

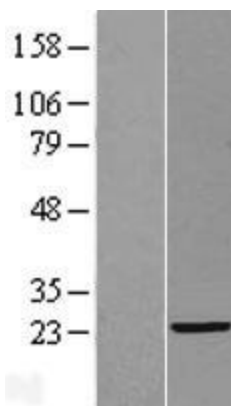
Locus ID: 84984

UniProt ID: [Q96LK0](#)

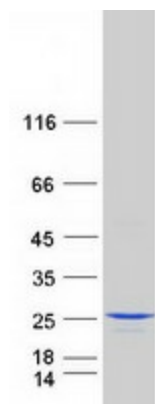
MW: 19.2 kDa

Gene Summary: The protein encoded by this gene localizes to centrosomes and primary cilia and co-localizes with a marker for the mother centriole. This gene resides in a region of human chromosome 3 that is linked to morbid obesity. A homozygous knockout of the orthologous gene in mouse resulted in mice with morbid obesity, hyperphagy, glucose intolerance, and insulin resistance. Mutations in this gene cause morbid obesity and spermatogenic failure (MOSPGF). This gene has a pseudogene on human chromosome 2. [provided by RefSeq, Apr 2014]

Product images:



Western blot validation of overexpression lysate (Cat# [LY409860]) using anti-DDK antibody (Cat# [TA50011-100]). Left: Cell lysates from untransfected HEK293T cells; Right: Cell lysates from HEK293T cells transfected with RC203186 using transfection reagent MegaTran 2.0 (Cat# [TT210002]).



Coomassie blue staining of purified CEP19 protein (Cat# [TP303186]). The protein was produced from HEK293T cells transfected with CEP19 cDNA clone (Cat# RC203186) using MegaTran 2.0 (Cat# [TT210002]).