

Product datasheet for **RC203184**

Gemin 7 (GEMIN7) (NM_024707) Human Tagged ORF Clone

Product data:

Product Type: Expression Plasmids
Product Name: Gemin 7 (GEMIN7) (NM_024707) Human Tagged ORF Clone
Tag: Myc-DDK
Symbol: Gemin 7
Synonyms: SIP3
Mammalian Cell Selection: Neomycin
Vector: pCMV6-Entry (PS100001)
E. coli Selection: Kanamycin (25 ug/mL)
ORF Nucleotide Sequence: >RC203184 ORF sequence
Red=Cloning site Blue=ORF Green=Tags(s)

TTTTGTAATACGACTCACTATAGGGCGCCGGGAATTCGTCGACTGGATCCGGTACCGAGGAGATCTGCC
GCC**CGGATCGCC**

ATGCAAACTCCAGTGAACATTCCCGTGCCTGTGCTCCGGCTGCCCGGGGCCCTGATGGCTTCAGCCGTG
GCTTTGCCCTGATGGACGCAGAGCCCCCTTGAGGCCAGAGGTTCTGAAATCCAGGAGTGTCCCATAGC
TCAAGAATCCCTGGAATCCAGGAGCAGCGGCCACGAGCCGCCCTTCGGGAGCGTTACCTCCGCAGCCTG
CTGGCCATGGTGGTTCATCAGGTGAGCTTACGTTGCACGAGGGTGTGCGTGTGGCCGCCCACTTTGGAG
CCACCGACCTGGATGTGGCCAATTCTACGTGTCACAGCTGCAGACTCCCATAGGTGTGCAAGCAGAGGC
GCTGCTCCGATGTAGTGACATTATTCATATACCTTCAAGCCA

ACGCGTACGCGGCCGCTCGAGCAGAACTCATCTCAGAAGAGGATCTGGCAGCAAATGATATCCTGGATT
ACAAGGATGACGACGATAAGGTTTAA

Protein Sequence: >RC203184 protein sequence
Red=Cloning site Green=Tags(s)

MQTPVNI PVPVLR LPRGPDGFSR GFAPDGRRAPLRPEVPEIQECPIAQESLESQEQRARAALRERYLRSL
LAMVGHQVSFTLHEGVRVA AHFGATDL DVANFYVSQLQTPIGVQAEALLRCSDIISYTFKP

TRTRPLEQKLI SEEDLAANDILDYKDDDDKV

Chromatograms: https://cdn.origene.com/chromatograms/mk6412_a09.zip

Restriction Sites: SgfI-MluI



[View online »](#)

Cloning Scheme:


ACCN: NM_024707

ORF Size: 393 bp

OTI Disclaimer: The molecular sequence of this clone aligns with the gene accession number as a point of reference only. However, individual transcript sequences of the same gene can differ through naturally occurring variations (e.g. polymorphisms), each with its own valid existence. This clone is substantially in agreement with the reference, but a complete review of all prevailing variants is recommended prior to use. [More info](#)

OTI Annotation: This clone was engineered to express the complete ORF with an expression tag. Expression varies depending on the nature of the gene.

Components: The ORF clone is ion-exchange column purified and shipped in a 2D barcoded Matrix tube containing 10ug of transfection-ready, dried plasmid DNA (reconstitute with 100 ul of water).

- Reconstitution Method:**
1. Centrifuge at 5,000xg for 5min.
 2. Carefully open the tube and add 100ul of sterile water to dissolve the DNA.
 3. Close the tube and incubate for 10 minutes at room temperature.
 4. Briefly vortex the tube and then do a quick spin (less than 5000xg) to concentrate the liquid at the bottom.
 5. Store the suspended plasmid at -20°C. The DNA is stable for at least one year from date of shipping when stored at -20°C.

Note: Plasmids are not sterile. For experiments where strict sterility is required, filtration with 0.22um filter is required.

RefSeq: [NM_024707.3](#)

RefSeq Size: 1647 bp

RefSeq ORF: 396 bp

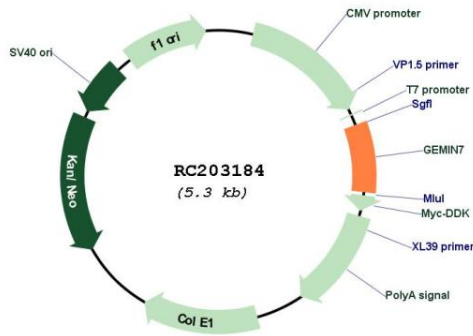
Locus ID: 79760
UniProt ID: [Q9H840](#)
Cytogenetics: 19q13.32

Protein Families: Stem cell - Pluripotency

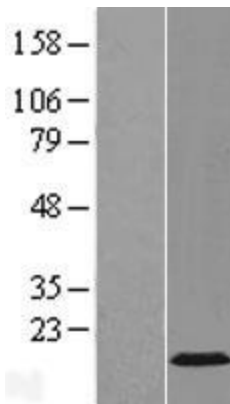
MW: 14.5 kDa

Gene Summary: The protein encoded by this gene is a component of the core SMN complex, which is required for pre-mRNA splicing in the nucleus. The encoded protein is found in the nucleoplasm, in nuclear "gems" (Gemini of Cajal bodies), and in the cytoplasm. Three transcript variants encoding the same protein have been found for this gene. [provided by RefSeq, Jul 2008]

Product images:



Circular map for RC203184



Western blot validation of overexpression lysate (Cat# [LY423479]) using anti-DDK antibody (Cat# [TA50011-100]). Left: Cell lysates from untransfected HEK293T cells; Right: Cell lysates from HEK293T cells transfected with [RC224525] using transfection reagent MegaTran 2.0 (Cat# [TT210002]).