

## Product datasheet for **RC203180**

### Cyclophilin B (PPIB) (NM\_000942) Human Tagged ORF Clone

#### Product data:

Product Type:	Expression Plasmids
Product Name:	Cyclophilin B (PPIB) (NM_000942) Human Tagged ORF Clone
Tag:	Myc-DDK
Symbol:	Cyclophilin B
Synonyms:	B; CYP-S1; CYPB; HEL-S-39; OI9; SCYLP
Mammalian Cell Selection:	Neomycin
Vector:	pCMV6-Entry (PS100001)
E. coli Selection:	Kanamycin (25 ug/mL)
ORF Nucleotide Sequence:	>RC203180 ORF sequence Red=Cloning site Blue=ORF Green=Tags(s)

TTTTGTAATACGACTCACTATAGGGCGCCGGGAATTCGTCGACTGGATCCGGTACCGAGGAGATCTGCC  
GCC**CGATCGCC**

ATGCTGCGCCTCTCCGAACGCAACATGAAGGTGCTCCTTGCCGCCCCCTCATCGCGGGTCCGTCTTCT  
TCCTGCTGCTGCCGGGACCTTCTGCGCCGATGAGAAGAAGAAGGGGCCAAAGTCACCGTCAAGGTGTA  
TTTTGACCTACGAATTGGAGATGAAGATGTAGGCCGGTGATCTTTGGTCTTTCGGAAAGACTGTTCCA  
AAAACAGTGGATAATTTTGTGGCCTTAGCTACAGGAGAGAAAGGATTTGGCTACAAAAACAGCAAATTCC  
ATCGTGAATCAAGGACTTCATGATCCAGGGCGGAGACTTCACCAGGGGAGATGGCACAGGAGGAAAGAG  
CATCTACGGTGAGCGCTTCCCCGATGAGAACTCAAAGTGAAGCACTACGGCCCTGGCTGGGTGAGCATG  
GCCAACGCAGGCAAAGACACCAACGGCTCCCAGTTCTTCATCACGACAGTCAAGACAGCCTGGCTAGATG  
GCAAGCATGTGGTGTGGCAAAGTTCTAGAGGGCATGGAGGTGGTGGGAAAGGTGGAGAGCACCAAGAC  
AGACAGCCGGGATAAACCCCTGAAGGATGTGATCATCGCAGACTGCGGCAAGATCGAGGTGGAGAAGCCC  
TTTGCCATCGCCAAGGAG

**ACGCGT**ACGCGGGCCGCTCGAGCAGAAACTCATCTCAGAAGAGGATCTGGCAGCAAATGATATCCTGGATT  
ACAAGGATGACGACGATAAGGTTTAA



[View online »](#)

**Protein Sequence:** >RC203180 protein sequence  
Red=Cloning site Green=Tags(s)

MLRLSERNMKVLAAAL IAGSVFFLLLPGPSAADEKKKGPKVTVKVVYFDLRIGDEDVGRVIFGLFGKTVP  
 KTVDNFVALATGEKGFYKNSKFHRVIKDFMIQGGDFTRGDGTGGKSIYGERFPDENFKLKHYGPGWVSM  
 ANAGKDTNGSQFFITTVKTAWLDGKHVVFQKVLLEGMEVVRKVESTKTDSRDKPLKDVIIADCGKIEVEKP  
 FAIAKE

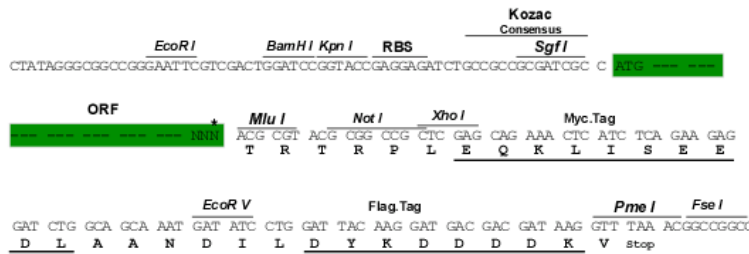
TRTRPLEQKLISEEDLAANDILDYKDDDDKV

**Chromatograms:** [https://cdn.origene.com/chromatograms/mk6281\\_b06.zip](https://cdn.origene.com/chromatograms/mk6281_b06.zip)

**Restriction Sites:** SgfI-MluI

**Cloning Scheme:**

Cloning sites used for ORF Shuttling:



\* The last codon before the Stop codon of the ORF

**ACCN:** NM\_000942

**ORF Size:** 648 bp

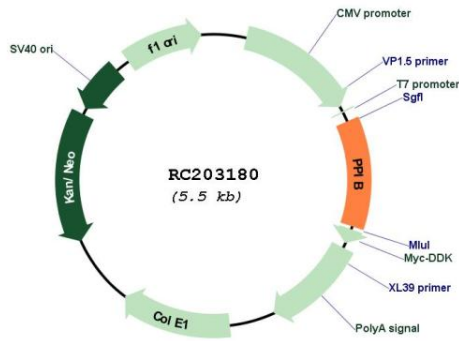
**OTI Disclaimer:** Due to the inherent nature of this plasmid, standard methods to replicate additional amounts of DNA in E. coli are highly likely to result in mutations and/or rearrangements. Therefore, OriGene does not guarantee the capability to replicate this plasmid DNA. Additional amounts of DNA can be purchased from OriGene with batch-specific, full-sequence verification at a reduced cost. Please contact our customer care team at [custsupport@origene.com](mailto:custsupport@origene.com) or by calling 301.340.3188 option 3 for pricing and delivery.

The molecular sequence of this clone aligns with the gene accession number as a point of reference only. However, individual transcript sequences of the same gene can differ through naturally occurring variations (e.g. polymorphisms), each with its own valid existence. This clone is substantially in agreement with the reference, but a complete review of all prevailing variants is recommended prior to use. [More info](#)

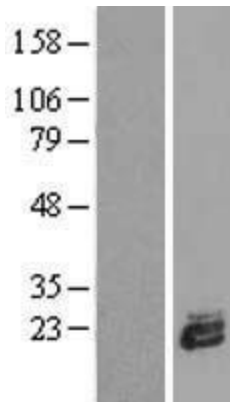
**OTI Annotation:** This clone was engineered to express the complete ORF with an expression tag. Expression varies depending on the nature of the gene.

<b>Components:</b>	The ORF clone is ion-exchange column purified and shipped in a 2D barcoded Matrix tube containing 10ug of transfection-ready, dried plasmid DNA (reconstitute with 100 ul of water).
<b>Reconstitution Method:</b>	<ol style="list-style-type: none"><li>1. Centrifuge at 5,000xg for 5min.</li><li>2. Carefully open the tube and add 100ul of sterile water to dissolve the DNA.</li><li>3. Close the tube and incubate for 10 minutes at room temperature.</li><li>4. Briefly vortex the tube and then do a quick spin (less than 5000xg) to concentrate the liquid at the bottom.</li><li>5. Store the suspended plasmid at -20°C. The DNA is stable for at least one year from date of shipping when stored at -20°C.</li></ol>
<b>Note:</b>	Plasmids are not sterile. For experiments where strict sterility is required, filtration with 0.22um filter is required.
<b>RefSeq:</b>	<a href="#">NM_000942.5</a>
<b>RefSeq Size:</b>	1045 bp
<b>RefSeq ORF:</b>	651 bp
<b>Locus ID:</b>	5479
<b>UniProt ID:</b>	<a href="#">P23284</a>
<b>Cytogenetics:</b>	15q22.31
<b>Domains:</b>	pro_isomerase
<b>Protein Families:</b>	Druggable Genome, Transmembrane
<b>MW:</b>	23.7 kDa
<b>Gene Summary:</b>	The protein encoded by this gene is a cyclosporine-binding protein and is mainly located within the endoplasmic reticulum. It is associated with the secretory pathway and released in biological fluids. This protein can bind to cells derived from T- and B-lymphocytes, and may regulate cyclosporine A-mediated immunosuppression. Variants have been identified in this protein that give rise to recessive forms of osteogenesis imperfecta. [provided by RefSeq, Oct 2009]

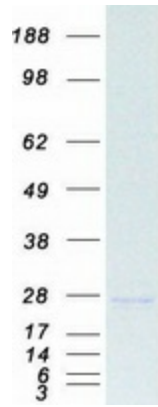
Product images:



Circular map for RC203180



Western blot validation of overexpression lysate (Cat# [LY424437]) using anti-DDK antibody (Cat# [TA50011-100]). Left: Cell lysates from untransfected HEK293T cells; Right: Cell lysates from HEK293T cells transfected with RC203180 using transfection reagent MegaTran 2.0 (Cat# [TT210002]).



Coomassie blue staining of purified PPIB protein (Cat# [TP303180]). The protein was produced from HEK293T cells transfected with PPIB cDNA clone (Cat# RC203180) using MegaTran 2.0 (Cat# [TT210002]).