

Product datasheet for **RC203176**

MPZL (MPZL1) (NM_003953) Human Tagged ORF Clone

Product data:

Product Type:	Expression Plasmids
Product Name:	MPZL (MPZL1) (NM_003953) Human Tagged ORF Clone
Tag:	Myc-DDK
Symbol:	MPZL
Synonyms:	MPZL1b; PZR; PZR1b; PZRa; PZRb
Mammalian Cell Selection:	Neomycin
Vector:	pCMV6-Entry (PS100001)
E. coli Selection:	Kanamycin (25 ug/mL)
ORF Nucleotide Sequence:	>RC203176 ORF sequence Red=Cloning site Blue=ORF Green=Tags(s)

TTTTGTAATACGACTCACTATAGGGCGGCCGGAATTCGTCGACTGGATCCGGTACCGAGGAGATCTGCC
GCC**CGATCGCC**

ATGGCAGCGTCCGCCGAGCCGGGGCGGTGATTGCAGCCCCAGACAGCCGGCGCTGGCTGTGGTCCGGTGC
TGGCGCGCGCGCTTGGGCTCTTGACAGCTGGAGTATCAGCCTTGGAAGTATATACGCCAAAAGAAATCTT
CGTGGCAAATGGTACACAAGGGAAGCTGACCTGCAAGTCAAGTCTACTAGTACGACTGGCGGGTTGACC
TCAGTCTCCTGGAGCTTCCAGCCAGAGGGGCGGACACTACTGTGTCGTTTTTCCACTACTCCCAAGGGC
AAGTGTACCTTGGGAATTATCCACCATTTAAAGACAGAATCAGCTGGGCTGGAGACCTTGACAAGAAAGA
TGCATCAATCAACATAGAAAATATGCAGTTTATACACAATGGCACCTATATCTGTGATGTCAAAAACCTT
CCTGACATCGTTGTCCAGCCTGGACACATTAGGCTCTATGTCGTAGAAAAAGAGAATTTGCTGTGTTTC
CAGTTTGGGTAGTGGTGGGCATAGTTACTGCTGTGGTCTAGGTCTCACTCTGCTCATCAGCATGATTCT
GGCTGTCTCTATAGAAGGAAAACCTCTAAACGGGATTACACTGGCTGCAGTACATCAGAGAGTTTGTCA
CCAGTTAAGCAGGCTCCTCGGAAGTCCCCTCCGACACTGAGGGTCTTGTAAAGAGTCTGCCTTCTGGAT
CTCACCAGGGCCAGTCATATATGCACAGTTAGACCCTCCGGCGGACATCACAGTGACAAGATTAACAA
GTCAGAGTCTGTGGTGTATGCGGATATCCGAAAGAAT

ACGCGTACGCGGCCGCTCGAGCAGAAACTCATCTCAGAAGAGGATCTGGCAGCAAATGATATCCTGGATT
ACAAGGATGACGACGATAAGGTTTAA



[View online »](#)

Protein Sequence: >RC203176 protein sequence
Red=Cloning site Green=Tags(s)

MAASAGAVIAAPDSRRWLWSVLAALGLLTAGVSALEVYTPKEIFVANGTQGKLTCKFKSTSTTGLT
 SVSWSFQPEGADTTVSFFHYSQGQVYLGNYPPFKDRISWAGDLKKDASINIENMQFIHNGTYICDVKNP
 PDIVVQPGHIRLYVVEKENLPVFPVWVVGIVTAVVLGLTLLISMILAVLYRRKNSKRDYTGCASTESLS
 PVKQAPRKSPSDTEGLVKSLPSGSHQGPVIYAQLDHSGGHSDKINKSESVVYADIRKN

TRTRPLEQKLISEEDLAANDILDYKDDDDKV

Chromatograms: https://cdn.origene.com/chromatograms/mk6412_d07.zip

Restriction Sites: SgfI-MluI

Cloning Scheme:



ACCN: NM_003953

ORF Size: 807 bp

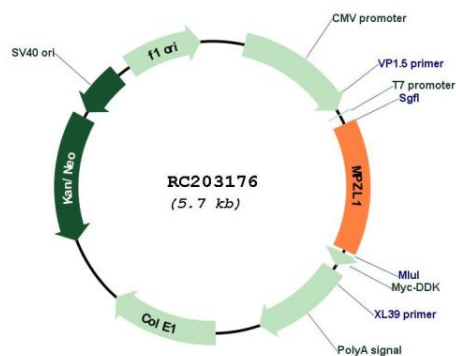
OTI Disclaimer: The molecular sequence of this clone aligns with the gene accession number as a point of reference only. However, individual transcript sequences of the same gene can differ through naturally occurring variations (e.g. polymorphisms), each with its own valid existence. This clone is substantially in agreement with the reference, but a complete review of all prevailing variants is recommended prior to use. [More info](#)

OTI Annotation: This clone was engineered to express the complete ORF with an expression tag. Expression varies depending on the nature of the gene.

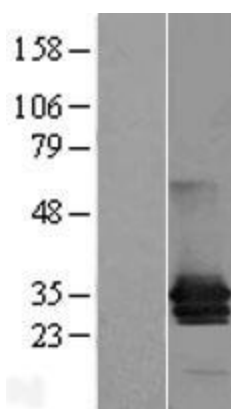
Components: The ORF clone is ion-exchange column purified and shipped in a 2D barcoded Matrix tube containing 10ug of transfection-ready, dried plasmid DNA (reconstitute with 100 ul of water).

Reconstitution Method:	<ol style="list-style-type: none">1. Centrifuge at 5,000xg for 5min.2. Carefully open the tube and add 100ul of sterile water to dissolve the DNA.3. Close the tube and incubate for 10 minutes at room temperature.4. Briefly vortex the tube and then do a quick spin (less than 5000xg) to concentrate the liquid at the bottom.5. Store the suspended plasmid at -20°C. The DNA is stable for at least one year from date of shipping when stored at -20°C.
RefSeq:	NM_003953.6
RefSeq Size:	5026 bp
RefSeq ORF:	810 bp
Locus ID:	9019
UniProt ID:	O95297
Cytogenetics:	1q24.2
Domains:	IGv, IG
Protein Families:	Druggable Genome, Transmembrane
Protein Pathways:	Cell adhesion molecules (CAMs)
MW:	29.1 kDa
Gene Summary:	Cell surface receptor, which is involved in signal transduction processes. Recruits PTPN11/SHP-2 to the cell membrane and is a putative substrate of PTPN11/SHP-2. Is a major receptor for concanavalin-A (ConA) and is involved in cellular signaling induced by ConA, which probably includes Src family tyrosine-protein kinases. Isoform 3 seems to have a dominant negative role; it blocks tyrosine phosphorylation of MPZL1 induced by ConA. Isoform 1, but not isoform 2 and isoform 3, may be involved in regulation of integrin-mediated cell motility.[UniProtKB/Swiss-Prot Function]

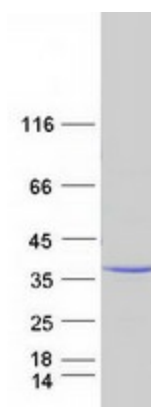
Product images:



Circular map for RC203176



Western blot validation of overexpression lysate (Cat# [LY418327]) using anti-DDK antibody (Cat# [TA50011-100]). Left: Cell lysates from untransfected HEK293T cells; Right: Cell lysates from HEK293T cells transfected with RC203176 using transfection reagent MegaTran 2.0 (Cat# [TT210002]).



Coomassie blue staining of purified MPZL1 protein (Cat# [TP303176]). The protein was produced from HEK293T cells transfected with MPZL1 cDNA clone (Cat# RC203176) using MegaTran 2.0 (Cat# [TT210002]).