

## Product datasheet for RC203166

### PDCL (NM\_005388) Human Tagged ORF Clone

#### Product data:

Product Type:	Expression Plasmids
Product Name:	PDCL (NM_005388) Human Tagged ORF Clone
Tag:	Myc-DDK
Symbol:	PDCL
Synonyms:	PhLP
Mammalian Cell Selection:	Neomycin
Vector:	pCMV6-Entry (PS100001)
E. coli Selection:	Kanamycin (25 ug/mL)
ORF Nucleotide Sequence:	>RC203166 ORF sequence Red=Cloning site Blue=ORF Green=Tags(s)

TTTTGTAATACGACTCACTATAGGGCGGCCGGAATTCGTCGACTGGATCCGGTACCGAGGAGATCTGCC  
GCC**CGGATCGCC**

ATGACCACCTTGATGATAAGTTGCTGGGGGAGAACTGCAGTACTACTATAGCAGCAGTGAGGATGAGG  
ACAGTGACCACGAGGACAAGGACCGAGGCAGATGTGCCCCAGCCAGCAGTTCTGTGCCTGCAGAGGCTGA  
GCTGGCAGGCGAAGGCATCTCAGTTAACACAGGCCAAAAGGTGTGATCAATGACTGGCGCCGCTTCAAG  
CAGTTGGAGACAGAGCAGAGGGAGGAGCAGTGCCGGGAGATGGAAAGGCTGATCAAGAAGCTGTCAATGA  
CTTGCAGGTCCCATCTGGATGAAGAGGAGGAGCAACAGAAACAGAAAGACCTCCAGGAGAAGATCAGTGG  
GAAGATGACTCTGAAGGAGTTTGCATAATGAATGAGGACCAAGATGATGAAGAGTTTCTGCAGCAGTAC  
CGGAAGCAGCGAATGGAAGAGATGCGGCAGCAGCTTACAAAGGGGCCCAATTCAAGCAGTTTTTGTAGA  
TCTCCAGTGGAGAAGGGTTTTAGACATGATTGATAAAGAACAGAAAAGCATTGTCATCATGGTTTCATAT  
TTATGAGGATGGCATTCCAGGGACCGAAGCCATGAATGGTTGCATGATCTGCCTTGCCGCAGAGTACCCA  
GCTGTCAAGTTCTGCAAGGTGAAGAGCTCAGTTATTGGCGCCAGCAGTCAGTTACCAGGAATGCCCTTC  
CTGCCCTGCTGATCTATAAGGGGGTGAATTGATCGGCAATTTTGTTCGTGTTACTGACCAGCTGGGGGA  
TGATTTCTTTGCTGTGGACCTTGAAGCTTTTCTCCAGGAATTTGGATTACTCCAGAAAAGGAAGTCTTG  
GTGCTGACATCTGTGCGTAACTTGCCACGTGTCACAGTGAGGATAGCGACCTGGAAATAGAT

**ACGCGT**ACGCGGCCGCTCGAGCAGAAACTCATCTCAGAAGAGGATCTGGCAGCAAATGATATCCTGGATT  
ACAAGGATGACGACGATAAGGTTTAA



[View online »](#)

**Protein Sequence:** >RC203166 protein sequence  
Red=Cloning site Green=Tags(s)

MTLDDKLLGEKLQYYYSSSEDESDHEDKDRGRCAPASSVPAEALAGEGISVNTGPKGVINDWRRFK  
 QLETEQREEQCREMERLIKLLSMTCRSHLDEEEEQKQKDLQEKISGKMTLKEFAIMNEDQDDEEFLQY  
 RKQRMEEMRQQLHKGPQFKQVFETSSSGEFLDMIDKEQKSIVIMVHIYEDGIPGTEAMNGCMICLAAEYP  
 AVKFCKVKSSVIGASSQFTRNALPALLIYKGGELIGNFVRVTDQLGDDFFAVDLEAFLQEFGLLPEKEVL  
 VLTSVRNSATCHSESDLEID

TRTRPLEQKLISEEDLAANDILDYKDDDDKV

**Chromatograms:** [https://cdn.origene.com/chromatograms/mk6569\\_c06.zip](https://cdn.origene.com/chromatograms/mk6569_c06.zip)

**Restriction Sites:** SgfI-MluI

**Cloning Scheme:**



**ACCN:** NM\_005388

**ORF Size:** 903 bp

**OTI Disclaimer:** The molecular sequence of this clone aligns with the gene accession number as a point of reference only. However, individual transcript sequences of the same gene can differ through naturally occurring variations (e.g. polymorphisms), each with its own valid existence. This clone is substantially in agreement with the reference, but a complete review of all prevailing variants is recommended prior to use. [More info](#)

**OTI Annotation:** This clone was engineered to express the complete ORF with an expression tag. Expression varies depending on the nature of the gene.

**Components:** The ORF clone is ion-exchange column purified and shipped in a 2D barcoded Matrix tube containing 10ug of transfection-ready, dried plasmid DNA (reconstitute with 100 ul of water).

**Reconstitution Method:**

1. Centrifuge at 5,000xg for 5min.
2. Carefully open the tube and add 100ul of sterile water to dissolve the DNA.
3. Close the tube and incubate for 10 minutes at room temperature.
4. Briefly vortex the tube and then do a quick spin (less than 5000xg) to concentrate the liquid at the bottom.
5. Store the suspended plasmid at -20°C. The DNA is stable for at least one year from date of shipping when stored at -20°C.

**RefSeq:** [NM\\_005388.5](#)

**RefSeq Size:** 3085 bp

**RefSeq ORF:** 906 bp

**Locus ID:** 5082

**UniProt ID:** [Q13371](#)

**Cytogenetics:** 9q33.2

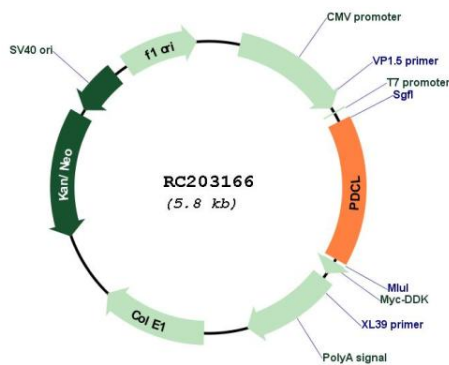
**Domains:** Phosducin

**Protein Families:** Druggable Genome

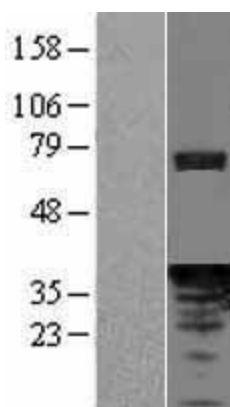
**MW:** 34.3 kDa

**Gene Summary:** Phosducin-like protein is a putative modulator of heterotrimeric G proteins. The protein shares extensive amino acid sequence homology with phosducin, a phosphoprotein expressed in retina and pineal gland. Both phosducin-like protein and phosphoducin have been shown to regulate G-protein signaling by binding to the beta-gamma subunits of G proteins. [provided by RefSeq, Jul 2008]

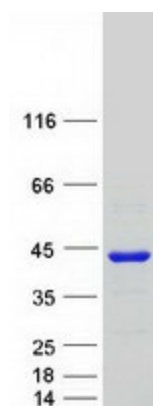
**Product images:**



Circular map for RC203166



Western blot validation of overexpression lysate (Cat# [LY417342]) using anti-DDK antibody (Cat# [TA50011-100]). Left: Cell lysates from untransfected HEK293T cells; Right: Cell lysates from HEK293T cells transfected with RC203166 using transfection reagent MegaTran 2.0 (Cat# [TT210002]).



Coomassie blue staining of purified PDCL protein (Cat# [TP303166]). The protein was produced from HEK293T cells transfected with PDCL cDNA clone (Cat# RC203166) using MegaTran 2.0 (Cat# [TT210002]).