

Product datasheet for **RC203165**

FAM222B (NM_018182) Human Tagged ORF Clone

Product data:

Product Type:	Expression Plasmids
Product Name:	FAM222B (NM_018182) Human Tagged ORF Clone
Tag:	Myc-DDK
Symbol:	FAM222B
Synonyms:	C17orf63
Mammalian Cell Selection:	Neomycin
Vector:	pCMV6-Entry (PS100001)
E. coli Selection:	Kanamycin (25 ug/mL)



[View online »](#)

ORF Nucleotide Sequence:

>RC203165 ORF sequence
 Red=Cloning site Blue=ORF Green=Tags(s)

TTTTGTAATACGACTCACTATAGGGCGGCCGGAATTCGTCGACTGGATCCGGTACCGAGGAGATCTGCC
 GCC**CGGATCGCC**

ATGCTAGCCTGTCTACCAGGGCCAGGTGACCTGTCTTTTTCAGCTTCTTTCTCACACGCAGATGAACACTG
 GACTTCAGAAATGGGACACTACACAGAAAATGAGAACTGCTCACTATCCTACCCAGCCGAATTGGATGC
 GTATGCTAAGAAGGTCGCAAACAACCCACTGACTATAAAAATCTTCCCAACAGTGTGAAGTTCCCAG
 CGGAAACACGTTTCGTCGTAAGTGTGAACGGCCTCGACACATCAGCCAGCGCTACAGCCCCTACCCGACAC
 AGGCTGCCACCAAGGCAGGCCTGCTTGCCATTGTCAAAGTCCAGCCAAAAGCATACTCAAGGACTTTGA
 CGGCACCCGAGCCGGTGTCCCTGAGGCCATCATGAACCCCCAGTGGCACCCCTATGCTACTGTGGCA
 CCCAGCACTTTAGCCACCCAGGCCAGGCTCTGGCCCGCCAGCAGGCCCTGCAGCATGCACAGACCC
 TGGCCCATGCCCTCCCCAGACGCTGCAGCACCCCTCAGGGTATCCCGCCACCCAGGCACGTCCCACCC
 TCAGAGCCTCCAGCAGCCTCAGGCCTGGGCCACCCCTCAGCCATGGCCCAAACCCAGGGCTTGGTCCAC
 CCTCAGGCCCTGGCTCACCAGGGTCTCCAGCACCCCAATCCCTTGTGCATGGAGGCCGGAAGATGC
 CAGACTCAGATGCCCCCGAATGTGACCGTGTCTACCTCAACTATCCCCCTTCAATGGCGGCCACTCT
 GCAGCACAGCCAGCCTCCGGACCTGAGTAGCATCGTGACCCAGATCAACCCAGTTTGGCAGACGAGGGCA
 GGCATCAGCACTACCTCAGTGTGTGAGGGCCAGATCGCCAACCCAGCCCCATTAGTCGCAGTCTGCTCA
 TCAATGCAAGCACCCGGTGTGACCCACAGCGTCCCCACACCAATGCCTTCATGTGTGGTCAATCCCAT
 GGAGCACACCCACGGCCACCGCCGCTTGCCTGCTGCAGGTCTGTCAACCTGCCACAGGCATCTCT
 CGCGTCCCCTAGGCTACCTAGCGACCTCAAGCCAGTCACTGGAACCAGCACCAGCTGGCCACCTAC
 AGCAGATGTGCAGCGAGGCTAGTGGGACGCCACCCCTGGCCTGACAGGCAAGCATGCGGCAGGACGCGA
 GTTGGCAGGGCCTGGCTTGTGGGCAAGGCCCTGCCTACCCGACGAACTCTGCCTGGCCAGTCCCTTC
 CATCTGAAGCCACCCCTGGAAGCCGACCCCATCCCCACAGTCAACGCATGGCAGCCCCATTGGCCT
 ACCCCAATGGTCACTACTTCCAACCCCTGTGGAACAACATTCTGCCCACTCCCAATAGCGACAGCTCGGG
 GTCTCAGGACCTTGCATGCCGTTCCACGGTGGGACGCCACAGGTGCACCCCTCGACTGTGCGGCAGCT
 CCCGGGGCCCACTACCGAGCAGGACCGGGGGCGGTCCAGTGGCAAGCCAGAACAGCTTGTGCAAAACAG
 TGGATTACCTAAGTGGGATTTCCAACAGGCCTGCTCCGAGAACAGAGCCTGGCCATGCTGAGCAAGGC
 CCACCGAGCCCTGGCAACCGAGCCCCGATCCCACAGAGAGTCAAGTCTTCATATTCAGCACCCAGGG
 TATAGA

ACGCGTACGCGGGCCGCTCGAGCAGAAACTCATCTCAGAAGAGGATCTGGCAGCAAATGATATCCTGGATT
 ACAAGGATGACGACGATAAGGTTTAA

Protein Sequence:

>RC203165 protein sequence
 Red=Cloning site Green=Tags(s)

MLACLPGPGDL SFQLLSHTQMNTGLQKWDTTQKMRTAHYPTPAELDAYAKKVANNPLTIKIFPNSVKVPQ
 RKHVRRTVNLDTSAQRYSPYPTQAATKAGLLAIVKVPKAKSILKDFDGTARLLPEAIMNPPVAPYATVA
 PSTLAHPQAQALARQALQHAQTLAHAPPQTLQHPQGIPPPQALSHPQSLQQPQGLGHPQPMATQGLVH
 PQALAHQGLQHPHNPL LHGGRKMPDSDAPPNVTVSTSTIPLSMAATLQHSQPPDLSSIVHQINQFCQTRA
 GISTTSVCEGQIANPSPISRSLINASTRVSTHSVPTPMPSCVVNPMETHAATAALPAAGPVNLP TGIS
 RVPTGYPSDLKPVTWNQHLAHLQQMCSEASGTPAPGLTGKHAAGRELAGPGFVGKAPAYPQELCLAQSF
 HLKPPLEKPTSPPPVNGMAAPLAYPNGHYFQPLWNNILPTPNSDSSGSQDLAMPFHGGQPTGAPLDCAAA
 PGAHYRAGTGGGPVASQNSLMQTVDYLSGDFQQACFREQLAML SKAHRAPGNRAPDPTESRSLHIQHPG
 YR

TRTRPLEQKLISEEDLAANDILDYKDDDDKV

Chromatograms:

https://cdn.origene.com/chromatograms/mk6434_f04.zip

Restriction Sites:

Sgfl-Mlul

Cloning Scheme:



ACCN: NM_018182

ORF Size: 1686 bp

OTI Disclaimer: The molecular sequence of this clone aligns with the gene accession number as a point of reference only. However, individual transcript sequences of the same gene can differ through naturally occurring variations (e.g. polymorphisms), each with its own valid existence. This clone is substantially in agreement with the reference, but a complete review of all prevailing variants is recommended prior to use. [More info](#)

OTI Annotation: This clone was engineered to express the complete ORF with an expression tag. Expression varies depending on the nature of the gene.

Components: The ORF clone is ion-exchange column purified and shipped in a 2D barcoded Matrix tube containing 10ug of transfection-ready, dried plasmid DNA (reconstitute with 100 ul of water).

- Reconstitution Method:
1. Centrifuge at 5,000xg for 5min.
 2. Carefully open the tube and add 100ul of sterile water to dissolve the DNA.
 3. Close the tube and incubate for 10 minutes at room temperature.
 4. Briefly vortex the tube and then do a quick spin (less than 5000xg) to concentrate the liquid at the bottom.
 5. Store the suspended plasmid at -20°C. The DNA is stable for at least one year from date of shipping when stored at -20°C.

RefSeq: [NM_018182.4](#)

RefSeq Size: 4213 bp

RefSeq ORF: 1689 bp

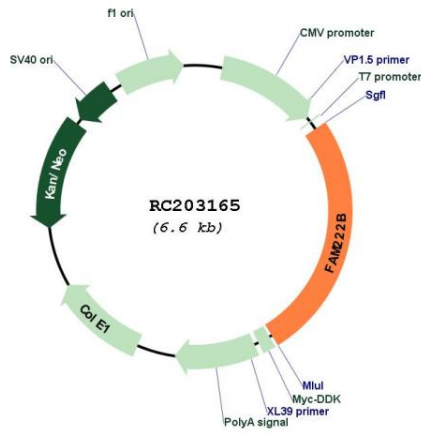
Locus ID: 55731

UniProt ID: [Q8WU58](#)

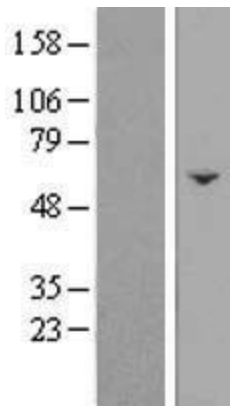
Cytogenetics: 17q11.2

MW: 59.7 kDa

Product images:



Circular map for RC203165



Western blot validation of overexpression lysate (Cat# [LY421447]) using anti-DDK antibody (Cat# [TA50011-100]). Left: Cell lysates from untransfected HEK293T cells; Right: Cell lysates from HEK293T cells transfected with [RC214213] using transfection reagent MegaTran 2.0 (Cat# [TT210002]).