

Product datasheet for **RC203164**

SCLY (NM_016510) Human Tagged ORF Clone

Product data:

Product Type:	Expression Plasmids
Product Name:	SCLY (NM_016510) Human Tagged ORF Clone
Tag:	Myc-DDK
Symbol:	SCLY
Synonyms:	hSCL; SCL
Mammalian Cell Selection:	Neomycin
Vector:	pCMV6-Entry (PS100001)
E. coli Selection:	Kanamycin (25 ug/mL)



[View online »](#)

ORF Nucleotide Sequence:

>RC203164 ORF sequence
 Red=Cloning site Blue=ORF Green=Tags(s)

TTTTGTAATACGACTCACTATAGGGCGGCCGGGAATTCGTCGACTGGATCCGGTACCGAGGAGATCTGCC
 GCC**CGATCGCC**

ATGGAGGCGCCGTGGCCCGGGGAGGGATGCGCCGGCACCCCGCGGAGTCAGCCAGCGGCTGCGGGA
 AACACAACCTCGCCGGAGAGGAAAAGTTTATATGGACTATAATGCAACGACTCCCCTGGAGCCAGAAGTTAT
 CCAGGCCATGACCAAGGCCATGTGGGAAGCCTGGGAAAATCCCAGCAGCCCGTATTCAGCAGGAAGAAAG
 GCCAAGGATATTATAAATGCAGCTCGGGAAAGCCTCGGAAGATGATAGGGGGGAAACCTCAAGATATAA
 TCTTCACTCCGGGGGCACTGAGTCAAATAATTTAGTAATCCATTCTGTGGTGAACATTTCCACGCAAA
 CCAGACCTCAAAGGGACACACAGGTGGGCACCACAGCCAGTGAAGGGGGCAAGCCCCATTTCACTACT
 TCCTCGTGGAACAGACTCCATCCGGTGCCTCGGAGCACCTGGTGAAGAACAAGTGGCAGCGGTCA
 CCTTTGTCCCGGTGCCAAGGTGAGCGGGCAGACAGAGGTGGACGACATCCTCGGGCAGTCCGCCCGAC
 CACACGCCTCGTGACCATCATGTGGCCAAACAATGAGACTGGCATTGTCATGCCTGTCCCTGAAATCAGT
 CAGCGCATTAAAGCCCTGAACCAGGAACGGGTGGCAGCTGGGCTACCTCCCATCCTCGTGCACACGGATG
 CTGCACAGGCCTTGGGAAGCAGCGCGTGGATGTGGAGGACCTGGGCGTGGACTTCTTACAATCGTGGG
 GCACAAGTTTTATGGTCCAGGATTGGCGCACTTTATATACGAGGACTTGGTGAATTTACCCCTCTCTAC
 CCTATGCTATTTGGAGGTGGACAAGAACGGAAATTCAGGCCAGGGACAGAGAACACCCCAATGATTGCTG
 GCCTTGGGAAGGCCCGGAGCTGGTGACCCAGAAGTGGAGGCTTATGAGGCCACATGAGGGACGTCGG
 CGACTACCTGGAAGAGAGGCTGGAAGCTGAATTCGGTGAAGAGAATCCATCTGAATAGCCAGTTTCCA
 GGCACCCAGCGGCTTCCAATACCTGTAACCTTTCCATCCGGGGACCCCGGCTTCAAGGCCACGTGGTGC
 TTGCGCAGTGGCAGTGTGATGGCCAGTGTGGGGCCGCGTCCACTCGGACCAGGGACCAGCCGTC
 CCCAGTCTGCTGAGCTACGGTGTCCCTTCGACGTGGCCAGGAACGCGCTCCGGCTCAGCGTGGGCCGC
 AGCACCACCAGGCCGAGGTGGACCTCGTCTGCAGGACCTGAAGCAGGCCGTGGCGCAGCTGGAGGACC
 AGGCC

ACGCGTACGCGGCCGCTCGAGCAGAACTCATCTCAGAAGAGGATCTGGCAGCAAATGATATCCTGGATT
 ACAAGGATGACGACGATAAGGTTTAA

Protein Sequence:

>RC203164 protein sequence
 Red=Cloning site Green=Tags(s)

MEAAVAPGRDAPAPAASQPSGCGKHNSPERKVYMDYNATTPLEPEVIQAMTKAMWEAWGNPSSPYSAGRK
 AKDIINAARESLAKMIGGKPQDIIFTSGGTESNNLVIHSVVKHFHANQTSKGHTGGHSPVKGAKPHFIT
 SSVEHDSIRLPLEHLVEEQVAAVTFVPVSKVSGQTEVDDILAAVRPTTRLVTIMLANNETGIVMPVPEIS
 QRIKALNQERVAAGLPPILVHTDAAQALGKQRVDVEDLGVDFLTIVGHKFGYGRIGALYIRGLGEFTPLY
 PMLFGGGQERNFRPGTENTPMIAGLGKAAELVTQNCAYEAHMRDVRDYLEERLEAEFGQKRIHLNSQFP
 GTQRLPNTCNFSIRGPRQLQGHVLAQCRVLMASVGAACHSDHGDQPSPVLLSYGVPPFDVARNALRLSVGR
 STTRAEVDLVVQDLKQAVAQLEDQA

TRTRPLEQKLISEEDLAANDILDYKDDDDKV

Chromatograms:

https://cdn.origene.com/chromatograms/mk6152_g10.zip

Restriction Sites:

Sgfl-Mlul

Cloning Scheme:

Cloning sites used for ORF Shuttling:



* The last codon before the Stop codon of the ORF

ACCN: NM_016510

ORF Size: 1335 bp

OTI Disclaimer: The molecular sequence of this clone aligns with the gene accession number as a point of reference only. However, individual transcript sequences of the same gene can differ through naturally occurring variations (e.g. polymorphisms), each with its own valid existence. This clone is substantially in agreement with the reference, but a complete review of all prevailing variants is recommended prior to use. [More info](#)

OTI Annotation: This clone was engineered to express the complete ORF with an expression tag. Expression varies depending on the nature of the gene.

Components: The ORF clone is ion-exchange column purified and shipped in a 2D barcoded Matrix tube containing 10ug of transfection-ready, dried plasmid DNA (reconstitute with 100 ul of water).

Reconstitution Method:

1. Centrifuge at 5,000xg for 5min.
2. Carefully open the tube and add 100ul of sterile water to dissolve the DNA.
3. Close the tube and incubate for 10 minutes at room temperature.
4. Briefly vortex the tube and then do a quick spin (less than 5000xg) to concentrate the liquid at the bottom.
5. Store the suspended plasmid at -20°C. The DNA is stable for at least one year from date of shipping when stored at -20°C.

RefSeq: [NM_016510.3](#), [NP_057594.2](#)
RefSeq Size: 2544 bp

RefSeq ORF: 1338 bp

Locus ID: 51540

UniProt ID: [Q96115](#)
Cytogenetics: 2q37.3

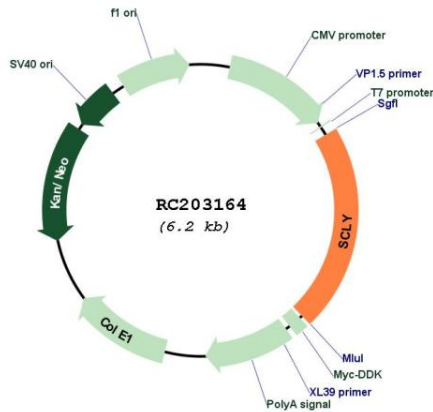
Domains: aminotran_5

Protein Pathways: Metabolic pathways, Selenoamino acid metabolism

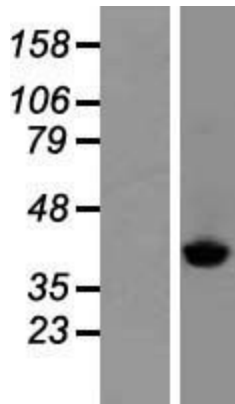
MW: 48.2 kDa

Gene Summary: Selenocysteine lyase (SCLY; EC 4.4.1.16) catalyzes the pyridoxal 5-prime phosphate-dependent conversion of L-selenocysteine to L-alanine and elemental selenium (Mihara et al., 2000 [PubMed 10692412]).[supplied by OMIM, Mar 2008]

Product images:



Circular map for RC203164



Western blot validation of overexpression lysate (Cat# [LY413947]) using anti-DDK antibody (Cat# [TA50011-100]). Left: Cell lysates from untransfected HEK293T cells; Right: Cell lysates from HEK293T cells transfected with RC203164 using transfection reagent MegaTran 2.0 (Cat# [TT210002]).