

Product datasheet for RC203157

NAT8 (NM_003960) Human Tagged ORF Clone

Product data:

| | |
|---------------------------|---|
| Product Type: | Expression Plasmids |
| Product Name: | NAT8 (NM_003960) Human Tagged ORF Clone |
| Tag: | Myc-DDK |
| Symbol: | NAT8 |
| Synonyms: | ATase2; CCNAT; CML1; GLA; Hcml1; TSC501; TSC510 |
| Mammalian Cell Selection: | Neomycin |
| Vector: | pCMV6-Entry (PS100001) |
| E. coli Selection: | Kanamycin (25 ug/mL) |
| ORF Nucleotide Sequence: | >RC203157 ORF sequence Red=Cloning site Blue=ORF Green=Tags(s) |

TTTTGTAATACGACTCACTATAGGGCGCCGGGAATTCGTCGACTGGATCCGGTACCGAGGAGATCTGCC
GCC**CGATCGCC**

ATGGCTCCTTGTCACATCCGCAAATACCAGGAGAGCGACCGCCAGTGGTTGTGGCTTGCTCTCCGGG
GGATGGCCGAGCATGCCCCAGCCACCTTCCGGCAATTGCTGAAGCTGCCTCGAACCTCATACTTACT
TGGGGGGCCCTCGCCCTACTCCTGGTCTCTGGATCCTGGCTTCTAGCCCTCGTGTTCAGCATCAGCCTC
TTCCCTGCCCTGTGGTTCCTTGCCAAAAACCTGGACGGAGTATGTGGACATGACATTGTGCACAGACA
TGTCTGACATTACCAAATCCTACCTGAGTGAGCGTGGCTCCTGCTTCTGGTGGCTGAGTCTGAAGAGAA
GGTGGTGGGCATGGTAGGAGCTCTGCCTGTTGATGATCCACCTTGAGGGAGAAGCGGTTGCAGCTGTT
CATCTCTTTGTGGACAGTGAGCACCGTCGTCAGGGGATAGCAAAAAGCCCTGGTCAGGACTGTCTCCAGT
TTGCCCGGGACCAGGGCTACAGTGAAGTTATCCTGGACACCGGCACCATCCAGCTCTCTGCTATGGCCCT
CTACCAGAGCATGGGCTTCAAGAAGACGGGCCAGTCCCTTCTTCTGTGTGTGGCCAGGCTAGTGGCTCTT
CATACAGTTCATTTATCTACCACCTCCCTTCTTCTAAGGTAGGGAGTCA

ACGCGTACGCGGGCCGCTCGAGCAGAACTCATCTCAGAAGAGGATCTGGCAGCAAATGATATCTGGATT
ACAAGGATGACGACGATAAGGTTTAA



[View online »](#)

Protein Sequence: >RC203157 protein sequence
 Red=Cloning site Green=Tags(s)

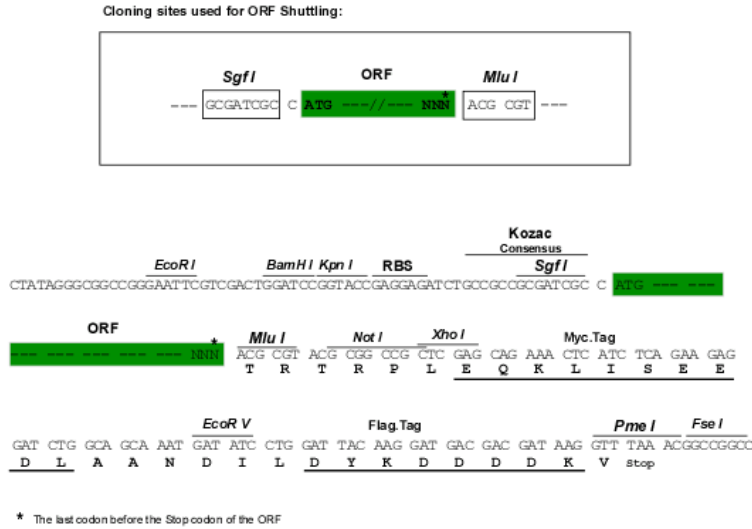
MAPCHIRKYQESDRQVVVGLLSRGMAEHAPATFRQLLKLPRTLILLGGPLALLLVSGSWLLALVFSISL
 FPALWFLAKKPWTEYVDMTLCCTDMSDITKSYLSERGSFCFWVAESEKVVGMVGPVDDPTLREKRLQLF
 HLFVDSEHRRQGIKALVRTVLQFARDQGYSEVILDTGTIQLSAMALYQSMGFKKTGQSSFVWARLVAL
 HTVHFIYHLPSSKVGSG

TRTRPLEQKLISEEDLAANDILDYKDDDDKV

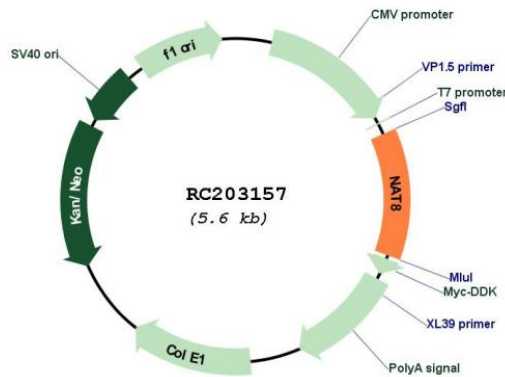
Chromatograms: https://cdn.origene.com/chromatograms/mk6054_a05.zip

Restriction Sites: SgfI-MluI

Cloning Scheme:



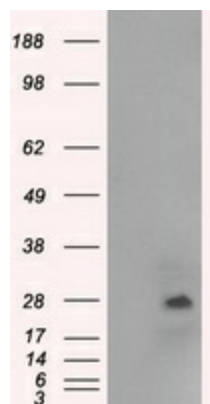
Plasmid Map:



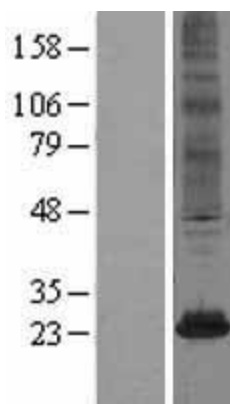
ACCN: NM_003960

ORF Size: 681 bp

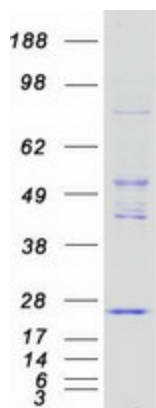
| | |
|-------------------------------|---|
| OTI Disclaimer: | The molecular sequence of this clone aligns with the gene accession number as a point of reference only. However, individual transcript sequences of the same gene can differ through naturally occurring variations (e.g. polymorphisms), each with its own valid existence. This clone is substantially in agreement with the reference, but a complete review of all prevailing variants is recommended prior to use. More info |
| OTI Annotation: | This clone was engineered to express the complete ORF with an expression tag. Expression varies depending on the nature of the gene. |
| Components: | The ORF clone is ion-exchange column purified and shipped in a 2D barcoded Matrix tube containing 10ug of transfection-ready, dried plasmid DNA (reconstitute with 100 ul of water). |
| Reconstitution Method: | <ol style="list-style-type: none">1. Centrifuge at 5,000xg for 5min.2. Carefully open the tube and add 100ul of sterile water to dissolve the DNA.3. Close the tube and incubate for 10 minutes at room temperature.4. Briefly vortex the tube and then do a quick spin (less than 5000xg) to concentrate the liquid at the bottom.5. Store the suspended plasmid at -20°C. The DNA is stable for at least one year from date of shipping when stored at -20°C. |
| RefSeq: | NM_003960.4 |
| RefSeq Size: | 1073 bp |
| RefSeq ORF: | 684 bp |
| Locus ID: | 9027 |
| UniProt ID: | Q9UHE5 |
| Cytogenetics: | 2p13.1 |
| Domains: | Acetyltransf |
| Protein Families: | Transmembrane |
| MW: | 25.6 kDa |
| Gene Summary: | This gene, isolated using the differential display method to detect tissue-specific genes, is specifically expressed in kidney and liver. The encoded protein shows amino acid sequence similarity to N-acetyltransferases. A similar protein in <i>Xenopus</i> affects cell adhesion and gastrulation movements, and may be localized in the secretory pathway. A highly similar paralog is found in a cluster with this gene. [provided by RefSeq, Sep 2008] |

Product images:


HEK293T cells were transfected with the pCMV6-ENTRY control (Cat# [PS100001], Left lane) or pCMV6-ENTRY NAT8 (Cat# RC203157, Right lane) cDNA for 48 hrs and lysed. Equivalent amounts of cell lysates (5 ug per lane) were separated by SDS-PAGE and immunoblotted with anti-NAT8 (Cat# [TA500544]). Positive lysates [LY401303] (100ug) and [LC401303] (20ug) can be purchased separately from OriGene.



Western blot validation of overexpression lysate (Cat# [LY401303]) using anti-DDK antibody (Cat# [TA50011-100]). Left: Cell lysates from untransfected HEK293T cells; Right: Cell lysates from HEK293T cells transfected with RC203157 using transfection reagent MegaTran 2.0 (Cat# [TT210002]).



Coomassie blue staining of purified NAT8 protein (Cat# [TP303157]). The protein was produced from HEK293T cells transfected with NAT8 cDNA clone (Cat# RC203157) using MegaTran 2.0 (Cat# [TT210002]).