

Product datasheet for RC203156

BBOX1 (NM_003986) Human Tagged ORF Clone

Product data:

Product Type:	Expression Plasmids
Product Name:	BBOX1 (NM_003986) Human Tagged ORF Clone
Tag:	Myc-DDK
Symbol:	BBOX1
Synonyms:	BBH; BBOX; G-BBH; gamma-BBH
Mammalian Cell Selection:	Neomycin
Vector:	pCMV6-Entry (PS100001)
E. coli Selection:	Kanamycin (25 ug/mL)
ORF Nucleotide Sequence:	>RC203156 ORF sequence Red=Cloning site Blue=ORF Green=Tags(s)

TTTTGTAATACGACTCACTATAGGGCGCCGGGAATTCGTCGACTGGATCCGGTACCGAGGAGATCTGCC
GCC**CGATCGCC**

ATGGCTTGTACCATCCAAAAGGCAGAAGCACTTGACGGGGCTCATTTGATGCAGATCCTCTGGTATGATG
AGGAAGAGTCTCTACCCAGCTGTATGGTTGAGAGACAAGTGTCCGTGCTCTGATTGCTACCTGGATTC
TGCAAAGCACGGAACTTCTAGTGAAGCTCTTGATGTGAACATTGGAATTAAGGCTTGATATTTGAC
AGAAAAAGGTGTACATCACATGGCCCGATGAGCATTACAGTGAATCCAGGCTGATTGGCTGAAGAAAA
GATGCTTTTCCAAGCAGGCCAGACAAAGCTCCAAGAGAATTGTTTTTCCAGAATGCCAATACTGGGG
CTCAGAGCTCCAGCTACCCACTTTGGATTTTGAAGATGTTTTAAGATATGATGAACATGCATACAAGTGG
CTCTCCACCCTCAAGAAAGTAGGCATAGTAAGACTCACCGGAGCATCTGACAAACCAGGAGAAGTTTCAA
AACTTGGGAAAAGGATGGGTTTCTCTATCTCACATTTTATGGACATACTTGGCAAGTGCAAGACAAAAT
CGATGCAAACAATGTGGCTTACACAAGTGGGAAGCTAAGCTTTCACACTGATTATCCAGCCCTCCATCAT
CCACCTGGGGTTCAGCTTCTCACTGCATAAAGCAAACAGTCACAGGGGGTGATTGAGAAATTTAGATG
GGTTAATGTGTGCCAAAAACTAAAGAAAAATAATCCTCAGGCATTCCAGATTTTGTCTCTACCTTTGT
GGACTTTACAGACATTGGAGTGGATTACTGTGATTTTTCTGTACAATCAAACATAAAAATATAGAGTTA
GATGATAAAGGCCAAGTGGTTCGCATCAACTTCAATAACGCAACTAGGGACACAATATTTGATGTACCTG
TTGAAAGAGTTACGCCTTTTTATGCTGCTCTGAAGGAGTTTGTGACCTCATGAACAGCAAGAATCCAA
GTTTACCTTCAAGATGAATCCAGGTGATGTGATTACTTTTGATAACTGGCGCTTACTTCATGGCCGACGT
AGCTATGAAGCAGGAACTGAGATATCCCGCCATCTAGAAGGAGCTTATGCTGACTGGGATGTGGTCATGT
CAAGGCTTCGTATCTTAAGGCAGAGGGTGGAGAATGGAAC

ACGCGTACGCGGCCGCTCGAGCAGAAACTCATCTCAGAAGAGGATCTGGCAGCAATGATATCCTGGATT
ACAAGGATGACGACGATAAGGTTTAA



[View online >](#)

Reconstitution Method:

1. Centrifuge at 5,000xg for 5min.
2. Carefully open the tube and add 100ul of sterile water to dissolve the DNA.
3. Close the tube and incubate for 10 minutes at room temperature.
4. Briefly vortex the tube and then do a quick spin (less than 5000xg) to concentrate the liquid at the bottom.
5. Store the suspended plasmid at -20°C. The DNA is stable for at least one year from date of shipping when stored at -20°C.

RefSeq: [NM_003986.1](#), [NP_003977.1](#)

RefSeq Size: 1901 bp

RefSeq ORF: 1164 bp

Locus ID: 8424

UniProt ID: [O75936](#)

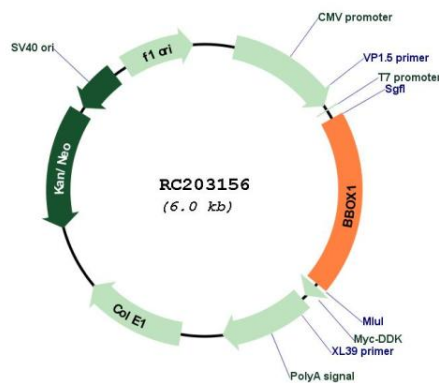
Cytogenetics: 11p14.2

Protein Pathways: Lysine degradation

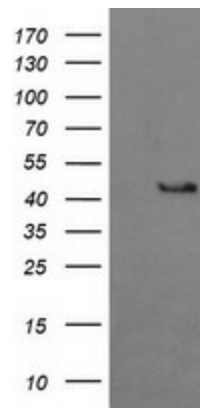
MW: 44.7 kDa

Gene Summary: This gene encodes gamma butyrobetaine hydroxylase which catalyzes the formation of L-carnitine from gamma-butyrobetaine, the last step in the L-carnitine biosynthetic pathway. Carnitine is essential for the transport of activated fatty acids across the mitochondrial membrane during mitochondrial beta-oxidation. [provided by RefSeq, Jul 2008]

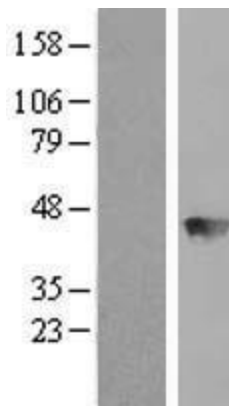
Product images:



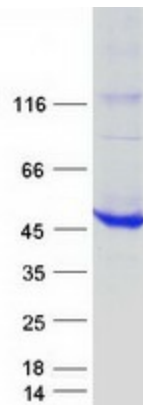
Circular map for RC203156



HEK293T cells were transfected with the pCMV6-ENTRY control (Cat# [PS100001], Left lane) or pCMV6-ENTRY BBOX1 (Cat# RC203156, Right lane) cDNA for 48 hrs and lysed. Equivalent amounts of cell lysates (5 ug per lane) were separated by SDS-PAGE and immunoblotted with anti-BBOX1 (Cat# [TA505753]). Positive lysates [LY418299] (100ug) and [LC418299] (20ug) can be purchased separately from OriGene.



Western blot validation of overexpression lysate (Cat# [LY418299]) using anti-DDK antibody (Cat# [TA50011-100]). Left: Cell lysates from untransfected HEK293T cells; Right: Cell lysates from HEK293T cells transfected with RC203156 using transfection reagent MegaTran 2.0 (Cat# [TT210002]).



Coomassie blue staining of purified BBOX1 protein (Cat# [TP303156]). The protein was produced from HEK293T cells transfected with BBOX1 cDNA clone (Cat# RC203156) using MegaTran 2.0 (Cat# [TT210002]).