

## Product datasheet for **RC203155**

### NDUFB6 (NM\_002493) Human Tagged ORF Clone

#### Product data:

**Product Type:** Expression Plasmids  
**Product Name:** NDUFB6 (NM\_002493) Human Tagged ORF Clone  
**Tag:** Myc-DDK  
**Symbol:** NDUFB6  
**Synonyms:** B17; CI  
**Mammalian Cell Selection:** Neomycin  
**Vector:** pCMV6-Entry (PS100001)  
**E. coli Selection:** Kanamycin (25 ug/mL)  
**ORF Nucleotide Sequence:** >RC203155 ORF sequence  
Red=Cloning site Blue=ORF Green=Tags(s)

TTTTGTAATACGACTCACTATAGGGCGGCCGGAATTCGTCGACTGGATCCGGTACCGAGGAGATCTGCC  
GCC**CGGATCGCC**

ATGACGGGGTACACTCCGGATGAGAACTGCGGCTGCAGCAGCTGCGAGAGCTGAGAAGCGGATGGCTGA  
AGGACCAGGAGCTGAGCCCTCGGGAGCCGGTCTGCCCCACAGAAGATGGGGCCATGGAGAAATCTG  
GAATAAATTTTGGAGAATAATCCCCTGGAGGAAAATGGTCCATGGGGTATACAAAAAGAGTATCTTT  
GTTTTCACTCATGTACTGTACCTGTCTGGATTATTCATTATTACATGAAGTATCATGTTTCTGAAAAAC  
CATATGGCATAGTTGAAAAGAAGTCCAGAATATCCCTGGTGATACAATTCTGGAGACTGGAGAAGTAAT  
TCCACCAATGAAAGAATTCCTGATCAACATCAT

**ACGCGT**ACGCGGCCGCTCGAGCAGAACTCATCTCAGAAGAGGATCTGGCAGCAAATGATATCCTGGATT  
ACAAGGATGACGACGATAAGGTTTAA

**Protein Sequence:** >RC203155 protein sequence  
Red=Cloning site Green=Tags(s)  
MTGYTPDEKLRLQQLRELRRRWLKDQELSPREPVLPPQKMGPMKFWNKFLENKSPWRKMVHGVYKKSIF  
VFTHVLVPWVHIIHYMKYHVSEKPYGIVEKKSRIFFPGDTILETGEVIPPMPKEFPDQHH

**TR**TRPLEQKLISEEDLAANDILDYKDDDDKV

**Chromatograms:** [https://cdn.origene.com/chromatograms/mk6434\\_a05.zip](https://cdn.origene.com/chromatograms/mk6434_a05.zip)

**Restriction Sites:** SgfI-MluI

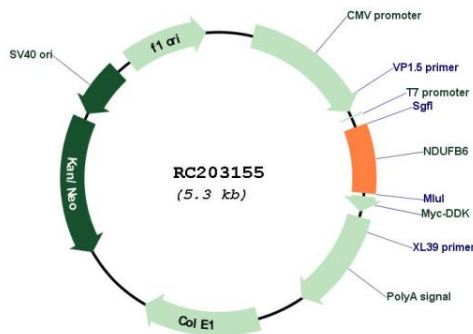


[View online »](#)

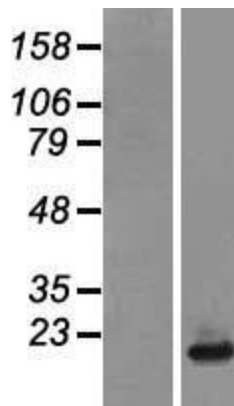


<b>Cytogenetics:</b>	9p21.1
<b>Protein Families:</b>	Transmembrane
<b>Protein Pathways:</b>	Alzheimer's disease, Huntington's disease, Metabolic pathways, Oxidative phosphorylation, Parkinson's disease
<b>MW:</b>	15.5 kDa
<b>Gene Summary:</b>	The protein encoded by this gene is a subunit of the multisubunit NADH:ubiquinone oxidoreductase (complex I). Mammalian complex I is composed of 45 different subunits. It locates at the mitochondrial inner membrane. This protein has NADH dehydrogenase activity and oxidoreductase activity. It transfers electrons from NADH to the respiratory chain. The immediate electron acceptor for the enzyme is believed to be ubiquinone. Alternative splicing occurs at this locus and three transcript variants encoding distinct isoforms have been identified. [provided by RefSeq, Jan 2011]

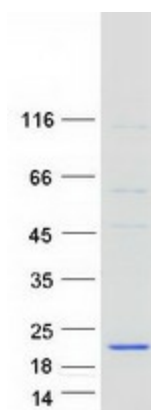
**Product images:**



Circular map for RC203155



Western blot validation of overexpression lysate (Cat# [LY419293]) using anti-DDK antibody (Cat# [TA50011-100]). Left: Cell lysates from untransfected HEK293T cells; Right: Cell lysates from HEK293T cells transfected with RC203155 using transfection reagent MegaTran 2.0 (Cat# [TT210002]).



Coomassie blue staining of purified NDUFB6 protein (Cat# [TP303155]). The protein was produced from HEK293T cells transfected with NDUFB6 cDNA clone (Cat# RC203155) using MegaTran 2.0 (Cat# [TT210002]).