

Product datasheet for RC203153

PPP1R3C (NM_005398) Human Tagged ORF Clone

Product data:

Product Type:	Expression Plasmids
Product Name:	PPP1R3C (NM_005398) Human Tagged ORF Clone
Tag:	Myc-DDK
Symbol:	PPP1R3C
Synonyms:	PPP1R5; PTG
Mammalian Cell Selection:	Neomycin
Vector:	pCMV6-Entry (PS100001)
E. coli Selection:	Kanamycin (25 ug/mL)
ORF Nucleotide Sequence:	>RC203153 ORF sequence Red=Cloning site Blue=ORF Green=Tags(s)

TTTTGTAATACGACTCACTATAGGGCGGCCGGAATTCGTCGACTGGATCCGGTACCGAGGAGATCTGCC
GCC**CGGATCGCC**

ATGAGCTGCACCAGAATGATCCAGGTTTTAGATCCACGTCCTTTGACAAGTTCGGTCATGCCCGTGGATG
TGGCCATGAGGCTTTGCTTGGCACATTCACCACCTGTGAAGAGTTTCTGGGCCCGTACGATGAATTTCA
ACGACGACATTTGTGAATAAATTAAGCCCTGAAATCATGTCTCAATATAAACACAAAGCCAAATCA
CAGAATGACTGGAAGTGTCTCACACAACCAAGCCAAGAAGCGCTTGTGTTTCTGACTCCAAGGGCCTCT
CTCTCACTGCGATCCATGTCTTCTCCGACCTCCAGAAGAACCAGCGTGGGATCTGCAGTTTGATCTCTT
GGACCTTAATGATATCTCTCTGCCTTAAACACCACGAGGAGAAAACTTGATTTTAGATTTCCCTCAG
CCTTCAACCGATTACTTAAGTTTCCGGAGCCACTTTCAGAAGAAGCTTTGTCTGTCTGGAGAAGTGCAT
TGCAAGAGCGAACAGTGACAGGGACTGTTAAAGTCAAAAATGTGAGTTTTGAGAAGAAAGTTCAGATCCG
TATCACTTTTCGATTCTTGGAAAACTACACTGACGTAGACTGTGTCTATATGAAAAATGTGTATGGTGGC
ACAGATAGTGATACTTCTCATTGGCATTGACTTACCCCTGTCACTCCAAGTGCAGAAAAATTGAGT
TCTGCATTTCTTACCATGCTAATGGGCAAGTCTTTGGGACAACAATGATGGTCAGAATTATAGAATTGT
TCATGTTCAATGGAAGCCTGATGGGGTGCAGACACAGATGGCACCCAGGACTGTGCATTCCACCAGACG
TCTCCTAAGACAGAGTTAGAGTCAACAATCTTTGGCAGTCCGAGGCTGGCTAGTGGGCTCTTCCAGAGT
GGCAGAGCTGGGGAGAATGGAGAACTTGGCCCTTATCGA

ACGCGTACGCGGCCGCTCGAGCAGAACTCATCTCAGAAGAGGATCTGGCAGCAATGATATCTGGATT
ACAAGGATGACGACGATAAGGTTTAA



[View online »](#)

Protein Sequence: >RC203153 protein sequence
 Red=Cloning site Green=Tags(s)

MSCTRMIQVLDPRLTSSVMPVDVAMRLCLAHSPVKSFLGPYDEFQRRHFVNKLKPLKSLNKHKAKS
 QNDWKCSHNQAKKRNVFADSKGLSLTAIHVFSDLPEEPAWDLQFDLLDLNDISSALKHHEEKNLILDFPQ
 PSTDYLSFRSHFQKNFVCLENCILQERTVTGTVKVKNVSFEKKVQIRITFDSWKNYTDVDCVYMKNVYGG
 TDSDTFSAIDLPPVIPTQKIEFCISYHANGQVFWDNNDGQNYRIVHVQWPKPDGVQTQMAPQDCAFHQT
 SPKTELESTIFGSPRLASGLFPEWQSWGRMENLASYSR

TRTRPLEQKLISEEDLAANDILDYKDDDDKVV

Chromatograms: https://cdn.origene.com/chromatograms/mk6569_h11.zip

Restriction Sites: SgfI-MluI

Cloning Scheme:

Cloning sites used for ORF Shuttling:



* The last codon before the Stop codon of the ORF

ACCN: NM_005398

ORF Size: 951 bp

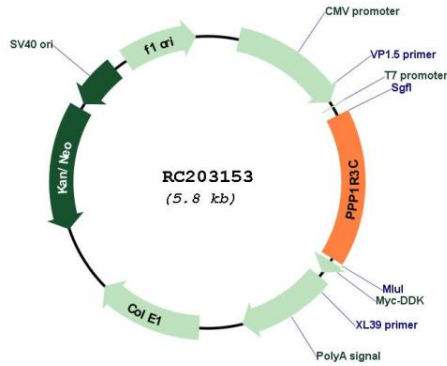
OTI Disclaimer: The molecular sequence of this clone aligns with the gene accession number as a point of reference only. However, individual transcript sequences of the same gene can differ through naturally occurring variations (e.g. polymorphisms), each with its own valid existence. This clone is substantially in agreement with the reference, but a complete review of all prevailing variants is recommended prior to use. [More info](#)

OTI Annotation: This clone was engineered to express the complete ORF with an expression tag. Expression varies depending on the nature of the gene.

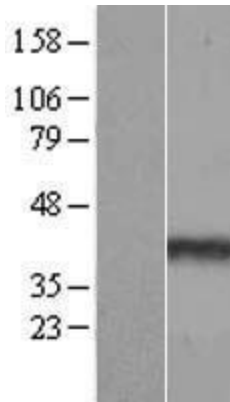
Components: The ORF clone is ion-exchange column purified and shipped in a 2D barcoded Matrix tube containing 10ug of transfection-ready, dried plasmid DNA (reconstitute with 100 ul of water).

Reconstitution Method:	<ol style="list-style-type: none">1. Centrifuge at 5,000xg for 5min.2. Carefully open the tube and add 100ul of sterile water to dissolve the DNA.3. Close the tube and incubate for 10 minutes at room temperature.4. Briefly vortex the tube and then do a quick spin (less than 5000xg) to concentrate the liquid at the bottom.5. Store the suspended plasmid at -20°C. The DNA is stable for at least one year from date of shipping when stored at -20°C.
RefSeq:	NM_005398.2
RefSeq Size:	2576 bp
RefSeq ORF:	954 bp
Locus ID:	5507
UniProt ID:	Q9UQK1
Cytogenetics:	10q23.32
Domains:	CBM_21
Protein Families:	Druggable Genome
Protein Pathways:	Insulin signaling pathway
MW:	36.4 kDa
Gene Summary:	<p>This gene encodes a carbohydrate binding protein that is a subunit of the protein phosphatase 1 (PP1) complex. PP1 catalyzes reversible protein phosphorylation, which is important in a wide range of cellular activities. The encoded protein affects glycogen biosynthesis by activating glycogen synthase and limiting glycogen breakdown by reducing glycogen phosphorylase activity. DNA hypermethylation of this gene has been found in colorectal cancer patients. The encoded protein also interacts with the laforin protein, which is a protein tyrosine phosphatase implicated in Lafora disease. [provided by RefSeq, Sep 2016]</p>

Product images:



Circular map for RC203153



Western blot validation of overexpression lysate (Cat# [LY417328]) using anti-DDK antibody (Cat# [TA50011-100]). Left: Cell lysates from untransfected HEK293T cells; Right: Cell lysates from HEK293T cells transfected with RC203153 using transfection reagent MegaTran 2.0 (Cat# [TT210002]).