

Product datasheet for **RC203146**

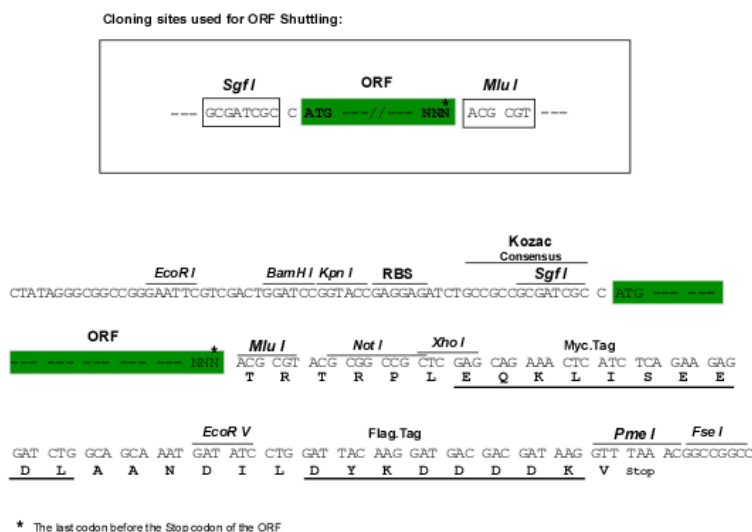
hCG (CGA) (NM_000735) Human Tagged ORF Clone

Product data:

Product Type:	Expression Plasmids
Product Name:	hCG (CGA) (NM_000735) Human Tagged ORF Clone
Tag:	Myc-DDK
Symbol:	hCG
Synonyms:	CG-ALPHA; FSHA; GPA1; GPHa; GPHA1; HCG; LHA; TSHA
Mammalian Cell Selection:	Neomycin
Vector:	pCMV6-Entry (PS100001)
E. coli Selection:	Kanamycin (25 ug/mL)
ORF Nucleotide Sequence:	<p>>RC203146 ORF sequence</p> <p>Red=Cloning site Blue=ORF Green=Tags(s)</p> <p>TTTTGTAATACGACTCACTATAGGGCGGCCGGAATTCGTCGACTGGATCCGGTACCGAGGAGATCTGCCGCCCGATCGCC</p> <p>ATGGATTACTACAGAAAATATGCAGCTATCTTTCTGGTCACATTGTCGGTGTTCGTCATGTTCTCCATTCCGCTCCTGATGTGCAGGATTGCCAGAAATGCACGCTACAGGAAAACCCACTCTTCTCCAGCCGGGTGCCCAATACTTCAGTGCATGGGCTGCTGCTCTAGAGCATATCCCACTCCACTAAGGTCCAAGAAGACGATGTTGGTCCAAAGAACGTACCTCAGAGTCCACTTGCTGTGTAGCTAAATCATATAACAGGGTCACAGTAATGGGGGTTCAAAGTGGAACACACGGCGTGCCACTGCAGTACTTGTTATTATCACAAATCT</p> <p>ACGCGTACGCGGCCGCTCGAGCAGAACTCATCTCAGAAGAGGATCTGGCAGCAAATGATATCCTGGATTACAAGGATGACGACGATAAGGTTTAA</p>
Protein Sequence:	<p>>RC203146 protein sequence</p> <p>Red=Cloning site Green=Tags(s)</p> <p>MDYYRKYAAIFLVTLVFLHVLHSAPDVQDCPECTLQENPLFSQPGAPILQCMGCCFSRAYPTPLRSKKTMLVQKNVTSESTCCVAKSYNRVTVMGGFKVENHTACHCSTCYHKS</p> <p>TRTRPLEQKLISEEDLAANDILDYKDDDDKV</p>
Chromatograms:	https://cdn.origene.com/chromatograms/mk6054_a07.zip
Restriction Sites:	SgfI-MluI


[View online »](#)

Cloning Scheme:



ACCN: NM_000735

ORF Size: 348 bp

OTI Disclaimer: The molecular sequence of this clone aligns with the gene accession number as a point of reference only. However, individual transcript sequences of the same gene can differ through naturally occurring variations (e.g. polymorphisms), each with its own valid existence. This clone is substantially in agreement with the reference, but a complete review of all prevailing variants is recommended prior to use. [More info](#)

OTI Annotation: This clone was engineered to express the complete ORF with an expression tag. Expression varies depending on the nature of the gene.

Components: The ORF clone is ion-exchange column purified and shipped in a 2D barcoded Matrix tube containing 10ug of transfection-ready, dried plasmid DNA (reconstitute with 100 ul of water).

Reconstitution Method:

1. Centrifuge at 5,000xg for 5min.
2. Carefully open the tube and add 100ul of sterile water to dissolve the DNA.
3. Close the tube and incubate for 10 minutes at room temperature.
4. Briefly vortex the tube and then do a quick spin (less than 5000xg) to concentrate the liquid at the bottom.
5. Store the suspended plasmid at -20°C. The DNA is stable for at least one year from date of shipping when stored at -20°C.

RefSeq: [NM_000735.4](#)

RefSeq Size: 768 bp

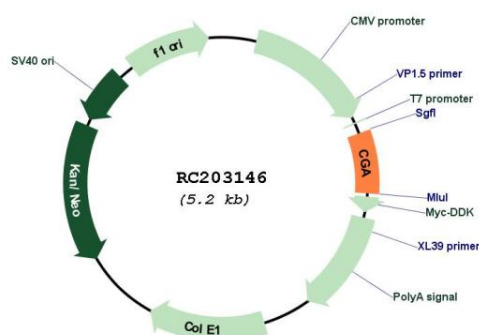
RefSeq ORF: 351 bp

Locus ID: 1081

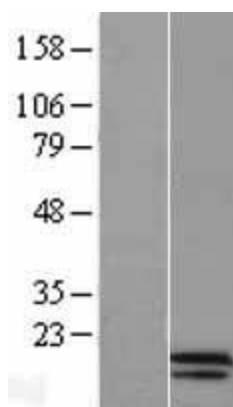
UniProt ID:	P01215
Cytogenetics:	6q14.3
Domains:	GHA
Protein Families:	Druggable Genome, ES Cell Differentiation/IPS, Secreted Protein
Protein Pathways:	Autoimmune thyroid disease, GnRH signaling pathway, Neuroactive ligand-receptor interaction
MW:	13 kDa

Gene Summary: The four human glycoprotein hormones chorionic gonadotropin (CG), luteinizing hormone (LH), follicle stimulating hormone (FSH), and thyroid stimulating hormone (TSH) are dimers consisting of alpha and beta subunits that are associated noncovalently. The alpha subunits of these hormones are identical, however, their beta chains are unique and confer biological specificity. The protein encoded by this gene is the alpha subunit and belongs to the glycoprotein hormones alpha chain family. Two transcript variants encoding different isoforms have been found for this gene. [provided by RefSeq, Nov 2011]

Product images:



Circular map for RC203146



Western blot validation of overexpression lysate (Cat# [LY400243]) using anti-DDK antibody (Cat# [TA50011-100]). Left: Cell lysates from untransfected HEK293T cells; Right: Cell lysates from HEK293T cells transfected with RC203146 using transfection reagent MegaTran 2.0 (Cat# [TT210002]).