

Product datasheet for RC203145

CPA3 (NM_001870) Human Tagged ORF Clone

Product data:

Product Type:	Expression Plasmids
Product Name:	CPA3 (NM_001870) Human Tagged ORF Clone
Tag:	Myc-DDK
Symbol:	CPA3
Synonyms:	MC-CPA
Mammalian Cell Selection:	Neomycin
Vector:	pCMV6-Entry (PS100001)
E. coli Selection:	Kanamycin (25 ug/mL)
ORF Nucleotide Sequence:	>RC203145 ORF sequence Red=Cloning site Blue=ORF Green=Tags(s)

TTTTGTAATACGACTCACTATAGGGCGGCCGGAATTCGTCGACTGGATCCGGTACCGAGGAGATCTGCC
GCC**CGATCGCC**

ATGAGGCTCATCTGCCTGTGGGTTTGATTGCTACCACTCTTGCAATTGCTCCTGTCCGCTTTGACAGGG
AGAAGGTGTTCCGCGTGAAGCCCCAGGATGAAAAACAAGCAGACATCATAAAGGACTTGGCCAAAACCAA
TGAGCTTGACTTCTGGTATCCAGGTGCCACCCACCACGTAGCTGCTAAAAATGATGGTGGATTTCCGAGTT
AGTGAGAAGGAATCCCAAGCCATCCAGTCTGCCTTGGATCAAAAATAAAATGCACTATGAAATCTTGATTC
ATGATCTACAAGAAGAGATTGAGAAACAGTTTGATGTTAAAGAAGATATCCAGGCAGGCACAGCTACGC
AAAATACAATAATTGGGAAAAGATTGTGGCTTGGACTGAAAAGATGATGGATAAGTATCCTGAAATGGTC
TCTCGTATTAATAATTGGATCTACTGTTGAAGATAATCCACTATATGTTCTGAAGATTGGGAAAAGAATG
AAAGAAGAAAGGCTATTTTTATGGATTGTGGCATTACGCACGAGAATGGGTCTCCCCAGCATTCTGCCA
GTGGTTTGTCTATCAGGCAACCAAACTTATGGGAGAAACAAAATATGACCAAACTCTTGGACCGAATG
AATTTTTACATTCTTCTGTGTTCAATGTTGATGGATATATTTGGTCATGGACAAAGAACCAGCATGTGGA
GAAAAATCGTTCCAAGAACCAAACTCCAATGCATCGGCACTGACCTCAACAGGAATTTAATGCTTC
ATGGAACCTCATTCCTAACACCAATGACCCATGTGCAGATAACTATCGGGGCTCTGCACCAGAGTCCGAG
AAAGAGACGAAAGCTGTCACTAATTTTCATTAGAAGCCACCTGAATGAAATCAAGGTTTACATCACCTTCC
ATTCCTACTCCCAGATGCTATTGTTTCCCTATGGATATACATCAAACTGCCACCTAACCATGAGGACTT
GGCCAAAGTTGCAAAGATTGGCACTGATGTTCTATCAACTCGATATGAAACCCGCTACATCTATGGCCCA
ATAGAATCAACAATTTACCCGATATCAGGTTCTTCTTTAGACTGGGCTTATGACCTGGGCATCAAACACA
CATTTGCCTTTGAGCTCCGAGATAAAGGCAAATTTGGTTTTCTCCTTCCAGAATCCCGGATAAAGCCAAC
GTGCAGAGAGACCATGCTAGCTGTCAAATTTATTGCCAAGTATATCTCAAGCATACTTCC

ACGCGTACGCGGCCGCTCGAGCAGAACTCATCTCAGAAGAGGATCTGGCAGCAAATGATATCCTGGATT
ACAAGGATGACGACGATAAGGTTTAA



[View online »](#)

Protein Sequence: >RC203145 protein sequence
 Red=Cloning site Green=Tags(s)

MRLILPVGLIATTLAIAPVRFDRKVFVRVKPQDEKQADIIDKDLAKTNELDFWYPGATHHVAAKMMVDFRV
 SEKESQAIQSALDQNMHYEILIHDLQEEIEKQFDVKEDIPGRHSYAKYNNWEKIVAWTEKMMDKYPEMV
 SRIKIGSTVEDNPLYVLKIGEKNERKKAIFMDCGIHAREWVSPAFQWFVYQATKYGRNKIMTKLLDRM
 NFYILPVFNVDGYIWSWTKNRMWRKNRSKNQNSKICIGTDLNRFNASWNSIPNTNDPCADNYRGSAPASE
 KETKAVTNFIRSHLNEIKVYITFHSYSQMLLFPYGYTSKLPNNHEDLAKVAKIGTDVLSRYETRYIYGP
 IESTIYPISGSSLDWAYDLGIKHTFAFELRDKGKFGFLLPESRIKPTCRETMLAVKFIKYLKHTS

TRTRPLEQKLISEEDLAANDILDYKDDDDKV

Chromatograms: https://cdn.origene.com/chromatograms/mk6055_c06.zip

Restriction Sites: SgfI-MluI

Cloning Scheme:



* The last codon before the Stop codon of the ORF

ACCN: NM_001870

ORF Size: 1251 bp

OTI Disclaimer: The molecular sequence of this clone aligns with the gene accession number as a point of reference only. However, individual transcript sequences of the same gene can differ through naturally occurring variations (e.g. polymorphisms), each with its own valid existence. This clone is substantially in agreement with the reference, but a complete review of all prevailing variants is recommended prior to use. [More info](#)

OTI Annotation: This clone was engineered to express the complete ORF with an expression tag. Expression varies depending on the nature of the gene.

Components: The ORF clone is ion-exchange column purified and shipped in a 2D barcoded Matrix tube containing 10ug of transfection-ready, dried plasmid DNA (reconstitute with 100 ul of water).

Reconstitution Method:

1. Centrifuge at 5,000xg for 5min.
2. Carefully open the tube and add 100ul of sterile water to dissolve the DNA.
3. Close the tube and incubate for 10 minutes at room temperature.
4. Briefly vortex the tube and then do a quick spin (less than 5000xg) to concentrate the liquid at the bottom.
5. Store the suspended plasmid at -20°C. The DNA is stable for at least one year from date of shipping when stored at -20°C.

RefSeq: [NM_001870.4](#)

RefSeq Size: 1699 bp

RefSeq ORF: 1254 bp

Locus ID: 1359

UniProt ID: [P15088](#)

Cytogenetics: 3q24

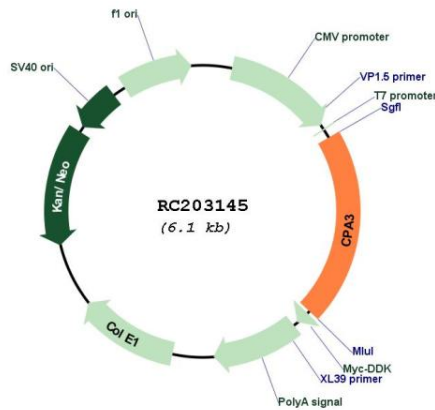
Protein Families: Druggable Genome, Protease, Secreted Protein

Protein Pathways: Renin-angiotensin system

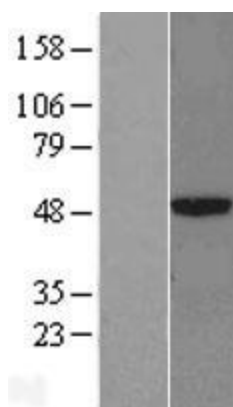
MW: 48.7 kDa

Gene Summary: This gene encodes a member of the carboxypeptidase A family of zinc metalloproteases. The encoded preproprotein is proteolytically processed to generate a mature protease that is released by mast cells and may be involved in the degradation of endogenous proteins and the inactivation of venom-associated peptides. Expression of this gene may be elevated in human asthma patients. [provided by RefSeq, Nov 2015]

Product images:



Circular map for RC203145



Western blot validation of overexpression lysate (Cat# [LY419698]) using anti-DDK antibody (Cat# [TA50011-100]). Left: Cell lysates from untransfected HEK293T cells; Right: Cell lysates from HEK293T cells transfected with RC203145 using transfection reagent MegaTran 2.0 (Cat# [TT210002]).