

Product datasheet for **RC203141**

IP10 (CXCL10) (NM_001565) Human Tagged ORF Clone

Product data:

Product Type: Expression Plasmids
Product Name: IP10 (CXCL10) (NM_001565) Human Tagged ORF Clone
Tag: Myc-DDK
Symbol: IP10
Synonyms: C7; crg-2; gIP-10; IFI10; INP10; IP-10; mob-1; SCYB10
Mammalian Cell Selection: Neomycin
Vector: pCMV6-Entry (PS100001)
E. coli Selection: Kanamycin (25 ug/mL)
ORF Nucleotide Sequence: >RC203141 ORF sequence
Red=Cloning site Blue=ORF Green=Tags(s)

TTTTGTAATACGACTCACTATAGGGCGCCGGGAATTCGTCGACTGGATCCGGTACCGAGGAGATCTGCC
GCC**CGATCGCC**

ATGAATCAAACGGCCATTCTGATTTGCTGCCTTATCTTTCTGACTCTAAGTGGCATTCAAGGAGTACCTC
TCTCTAGAAGTACGCTGTACCTGCATCAGCATTAGTAATCAACCTGTTAATCCAAGGTCTTTAGAAA
ACTTGAAATTATCCTGCAAGCCAATTTGTCCACGTGTTGAGATCATTGCTACAATGAAAAGAAGGGT
GAGAAGAGATGTCTGAATCCAGAATCGAAGGCCATCAAGAATTTACTGAAAGCAGTTAGCAAGGAAAGGT
CTAAAAGATCTCCT

ACGCGTACGCGGCCGCTCGAGCAGAAACTCATCTCAGAAGAGGATCTGGCAGCAAATGATATCCTGGATT
ACAAGGATGACGACGATAAGGTTTAA

Protein Sequence: >RC203141 protein sequence
Red=Cloning site Green=Tags(s)
MNQTAILICCLIFLTLSGIQGVPLSRVTRCTCISISNQPVNPRSLKLEIIPASQFCPRVEIIATMKKKG
EKRLNPESKAIKNLLKAVSKERSKRSP

TRTRPLEQKLISEEDLAANDILDYKDDDDKV

Chromatograms: https://cdn.origene.com/chromatograms/mk6212_b05.zip

Restriction Sites: SgfI-MluI

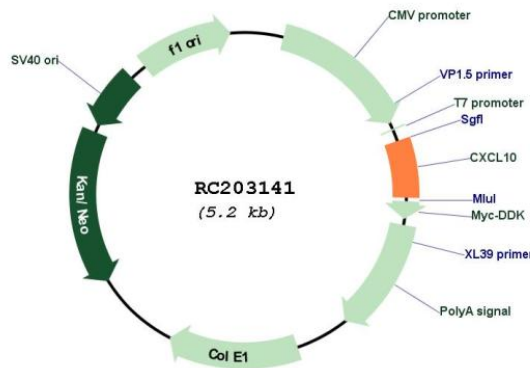


[View online »](#)

Cloning Scheme:



Plasmid Map:



ACCN: NM_001565

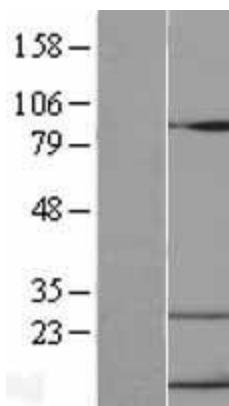
ORF Size: 294 bp

OTI Disclaimer: The molecular sequence of this clone aligns with the gene accession number as a point of reference only. However, individual transcript sequences of the same gene can differ through naturally occurring variations (e.g. polymorphisms), each with its own valid existence. This clone is substantially in agreement with the reference, but a complete review of all prevailing variants is recommended prior to use. [More info](#)

OTI Annotation: This clone was engineered to express the complete ORF with an expression tag. Expression varies depending on the nature of the gene.

Components:	The ORF clone is ion-exchange column purified and shipped in a 2D barcoded Matrix tube containing 10ug of transfection-ready, dried plasmid DNA (reconstitute with 100 ul of water).
Reconstitution Method:	<ol style="list-style-type: none">1. Centrifuge at 5,000xg for 5min.2. Carefully open the tube and add 100ul of sterile water to dissolve the DNA.3. Close the tube and incubate for 10 minutes at room temperature.4. Briefly vortex the tube and then do a quick spin (less than 5000xg) to concentrate the liquid at the bottom.5. Store the suspended plasmid at -20°C. The DNA is stable for at least one year from date of shipping when stored at -20°C.
RefSeq:	NM_001565.4
RefSeq Size:	1227 bp
RefSeq ORF:	297 bp
Locus ID:	3627
UniProt ID:	P02778
Cytogenetics:	4q21.1
Domains:	IL8
Protein Families:	Druggable Genome, Secreted Protein, Transmembrane
Protein Pathways:	Chemokine signaling pathway, Cytokine-cytokine receptor interaction, Cytosolic DNA-sensing pathway, RIG-I-like receptor signaling pathway, Toll-like receptor signaling pathway
MW:	10.9 kDa
Gene Summary:	This antimicrobial gene encodes a chemokine of the CXC subfamily and ligand for the receptor CXCR3. Binding of this protein to CXCR3 results in pleiotropic effects, including stimulation of monocytes, natural killer and T-cell migration, and modulation of adhesion molecule expression. This gene may also be a key regulator of the 'cytokine storm' immune response to SARS-CoV-2 infection. [provided by RefSeq, Sep 2020]

Product images:



Western blot validation of overexpression lysate (Cat# [LY419857]) using anti-DDK antibody (Cat# [TA50011-100]). Left: Cell lysates from untransfected HEK293T cells; Right: Cell lysates from HEK293T cells transfected with RC203141 using transfection reagent MegaTran 2.0 (Cat# [TT210002]).