

Product datasheet for RC203139

SERPINB2 (NM_002575) Human Tagged ORF Clone

Product data:

Product Type:	Expression Plasmids
Product Name:	SERPINB2 (NM_002575) Human Tagged ORF Clone
Tag:	Myc-DDK
Symbol:	SERPINB2
Synonyms:	HsT1201; PAI; PAI-2; PAI2; PLANH2
Mammalian Cell Selection:	Neomycin
Vector:	pCMV6-Entry (PS100001)
E. coli Selection:	Kanamycin (25 ug/mL)
ORF Nucleotide Sequence:	>RC203139 ORF sequence Red=Cloning site Blue=ORF Green=Tags(s)

TTTTGTAATACGACTCACTATAGGGCGGCCGGAATTCGTCGACTGGATCCGGTACCGAGGAGATCTGCC
GCC**CGATCGCC**

ATGGAGGATCTTTGTGTGGCAAACACACTCTTTGCCCTCAATTTATTCAAGCATCTGGCAAAGCAAGCC
CCACCCAGAACCTCTTCTCTCCCATGGAGCATCTCGTCCACCATGGCCATGGTCTACATGGGCTCCAG
GGGAGCAGCAAGACAGATGGCAAGGTGCTTCAGTTAATGAAGTGGAGCCAATGCAGTTACCCCC
ATGACTCCAGAGAACTTTACCAGCTGTGGTTCATGCAGCAGATCCAGAAGGGTAGTTATCTGATGCGA
TTTTGCAGGCACAAGCTGCAGATAAAATCCATTATCCTTCCGCTCTCTCAGCTCTGCAATCAATGCATC
CACAGGGAATTTACTGGAAAGTGCAATAAGCTGTTTGGTGAGAAGTCTGCGAGCTTCCGGGAAGAA
TATATTCGACTCTGTGAGAAATATTACTCCTCAGAACCCAGGCAGTAGACTTCCTAGAATGTGCAGAAG
AAGCTAGAAAAAGATTTATTCCTGGGTCAAGACTCAAACCAAAGGCAAAATCCCAAACCTGTTACCTGA
AGGTTCTGTAGATGGGGATACCAGGATGGTCTGGTGAATGCTGTCTACTTCAAAGGAAAGTGGAAAAC
CCATTTGAGAAGAACTAAATGGGCTTTATCCTTCCGTGAAACTCGGCTCAGCGCACACCTGTACAGA
TGATGTAATGCGTGAAAAGCTAAACATTGGATACATAGAAGACCTAAAGGCTCAGATTCAGAACTCCC
ATATGCTGGAGATGTTAGCATGTTCTTGTGCTTCCAGATGAAATTGCCGATGTGTCCACTGGCTGGAG
CTGCTGGAAAGTAAAATAACCTATGACAAACTCAACAAGTGGACCAGCAAAGCAAAATGGCTGAAGATG
AAGTTGAGGTATACATACCCAGTTCAAATTAGAAGAGCATTATGAACTCAGATCCATTCTGAGAAGCAT
GGGCATGGAGGACGCCTTCAACAAGGGACGGGCAATTTCTCAGGGATGTCGGAGAGGAATGACCTGTTT
CTTTCTGAAGTGTCCACCAAGCCATGGTGGATGTGAATGAGGAGGGCACTGAAGCAGCCCTGGCACAG
GAGGTGTATGACAGGGAGAAGTGGACATGGAGGCCACAGTTTGTGGCAGATCATCCTTTTCTTTTCT
TATTATGCATAAGATAACCAACTGCATTTTATTTTTCGGCAGATTTTCTCACCC

ACGCGTACGCGGCCGCTCGAGCAGAACTCATCTCAGAAGAGGATCTGGCAGCAATGATATCCTGGATT
ACAAGGATGACGACGATAAGGTTTAA



[View online »](#)

Protein Sequence: >RC203139 protein sequence
 Red=Cloning site Green=Tags(s)

MEDLCVANTL FALNLFKHLAKASPTQNLFLSPWSISSTMAMVYMGSRGSTEDQMAKVLQFNEVGANAVTP
 MTPENFTSCGFMQIQKGSYPDAILQAQAADKIHSSFRSLSSAINASTGNYLLESVNKLFGEKSASFREE
 YIRLCQKYSSPEQAVDFLECAEEARKKIYSWVKQTQTKGKIPNLLPEGSVDGDRMVLVNAVYFKGKWK
 PFEKLNGLYPFRVNSAQRTVPQMMYLREKLNIGYIEDLKAQILELPYAGDVSMFLLL PDEIADVSTGLE
 LLESEITYDKLNKWT SKDKMAEDEVEVYIPQFKLEEYELRSILRSMGMEDAFNKGRANFSGMSERNDLF
 LSEVFHQAMVDVNEEGTEAAAGTGGVMTGRTGHGGPQFVADHPFLFLIMHKITNCILFFGRFSSP

TRTRPLEQKLISEEDLAANDILDYKDDDDKV

Chromatograms: https://cdn.origene.com/chromatograms/mk6055_e04.zip

Restriction Sites: SgfI-MluI

Cloning Scheme:



ACCN: NM_002575

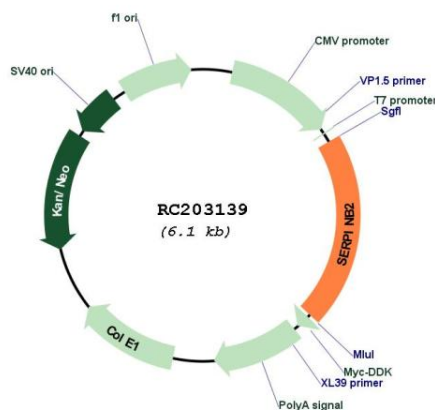
ORF Size: 1245 bp

OTI Disclaimer: Due to the inherent nature of this plasmid, standard methods to replicate additional amounts of DNA in E. coli are highly likely to result in mutations and/or rearrangements. Therefore, OriGene does not guarantee the capability to replicate this plasmid DNA. Additional amounts of DNA can be purchased from OriGene with batch-specific, full-sequence verification at a reduced cost. Please contact our customer care team at custsupport@origene.com or by calling 301.340.3188 option 3 for pricing and delivery.

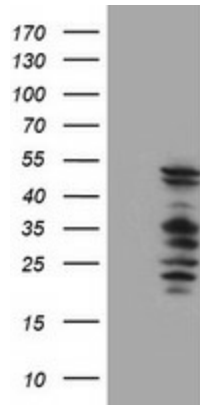
The molecular sequence of this clone aligns with the gene accession number as a point of reference only. However, individual transcript sequences of the same gene can differ through naturally occurring variations (e.g. polymorphisms), each with its own valid existence. This clone is substantially in agreement with the reference, but a complete review of all prevailing variants is recommended prior to use. [More info](#)

OTI Annotation:	This clone was engineered to express the complete ORF with an expression tag. Expression varies depending on the nature of the gene.
Components:	The ORF clone is ion-exchange column purified and shipped in a 2D barcoded Matrix tube containing 10ug of transfection-ready, dried plasmid DNA (reconstitute with 100 ul of water).
Reconstitution Method:	<ol style="list-style-type: none"> 1. Centrifuge at 5,000xg for 5min. 2. Carefully open the tube and add 100ul of sterile water to dissolve the DNA. 3. Close the tube and incubate for 10 minutes at room temperature. 4. Briefly vortex the tube and then do a quick spin (less than 5000xg) to concentrate the liquid at the bottom. 5. Store the suspended plasmid at -20°C. The DNA is stable for at least one year from date of shipping when stored at -20°C.
RefSeq:	<u>NM_002575.3</u>
RefSeq Size:	1922 bp
RefSeq ORF:	1248 bp
Locus ID:	5055
UniProt ID:	<u>P05120</u>
Cytogenetics:	18q21.33-q22.1
Domains:	SERPIN
Protein Families:	Druggable Genome, Secreted Protein
MW:	46.6 kDa
Gene Summary:	Inhibits urokinase-type plasminogen activator. The monocyte derived PAI-2 is distinct from the endothelial cell-derived PAI-1.[UniProtKB/Swiss-Prot Function]

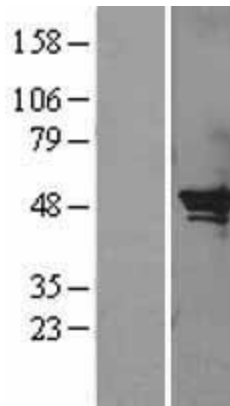
Product images:



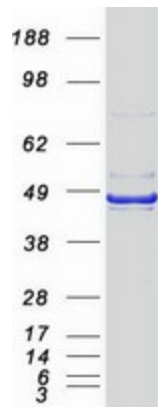
Circular map for RC203139



HEK293T cells were transfected with the pCMV6-ENTRY control (Cat# [PS100001], Left lane) or pCMV6-ENTRY SERPINB2 (Cat# RC203139, Right lane) cDNA for 48 hrs and lysed. Equivalent amounts of cell lysates (5 ug per lane) were separated by SDS-PAGE and immunoblotted with anti-SERPINB2(Cat# [TA503926]). Positive lysates [LY400915] (100ug) and [LC400915] (20ug) can be purchased separately from OriGene.



Western blot validation of overexpression lysate (Cat# [LY428363]) using anti-DDK antibody (Cat# [TA50011-100]). Left: Cell lysates from untransfected HEK293T cells; Right: Cell lysates from HEK293T cells transfected with [RC227583] using transfection reagent MegaTran 2.0 (Cat# [TT210002]).



Coomassie blue staining of purified SERPINB2 protein (Cat# [TP303139]). The protein was produced from HEK293T cells transfected with SERPINB2 cDNA clone (Cat# RC203139) using MegaTran 2.0 (Cat# [TT210002]).