

Product datasheet for **RC203136**

PI3 (NM_002638) Human Tagged ORF Clone

Product data:

Product Type: Expression Plasmids
Product Name: PI3 (NM_002638) Human Tagged ORF Clone
Tag: Myc-DDK
Symbol: PI3
Synonyms: cementoin; ESI; SKALP; WAP3; WFDC14
Vector: pCMV6-Entry (PS100001)
E. coli Selection: Kanamycin (25 ug/mL)
Cell Selection: Neomycin
ORF Nucleotide Sequence: >RC203136 ORF sequence
Red=Cloning site Blue=ORF Green=Tags(s)

TTTTGTAATACGACTCACTATAGGGCGCCGGAATTCGTCGACTGGATCCGGTACCGAGGAGATCTGCC
GCC**GCGATCGCC**

ATGAGGGCCAGCAGCTTCTTGATCGTGGTGGTGTTCCTCATCGCTGGGACGCTGGTTCTAGAGGCAGCTG
TCACGGGAGTTCTCTGTTAAAGGTCAAGACACTGTCAAAGGCCGTGCCATTCAATGGACAAGATCCCGT
TAAAGGACAAGTTTCAGTTAAAGGTCAAGATAAAGTCAAAGCGCAAGAGCCAGTCAAAGGTCCAGTCTCC
ACTAAGCCTGGCTCCTGCCCCATTATCTTGATCCGGTGCGCCATGTTGAATCCCCCTAACCGCTGCTTGA
AAGATACTGACTGCCAGGAATCAAGAAGTGTGTGAAGGCTCTTGCGGGATGGCCTGTTTCGTTCCCCA
G

ACGCGTACGCGGCCGCTCGAGCAGAACTCATCTCAGAAGAGGATCTGGCAGCAAATGATATCCTGGATT
ACAAGGATGACGACGATAAGGTTTAA

Protein Sequence: >RC203136 protein sequence
Red=Cloning site Green=Tags(s)
MRASSFLIVVVFLIAGTLVLEAAVTGVPVKQDQTVKGRVPFNGQDPVKGQVSVKGQDKVKAQEPVKGPVS
TKPGSCPILIRCAMLNPPNRCLKDTPGIIKCEGSCGMACFVPQ

TRTRPLEQKLISEEDLAANDILDYKDDDDKV

Chromatograms: https://cdn.origene.com/chromatograms/mk6054_c08.zip

Restriction Sites: SgfI-MluI

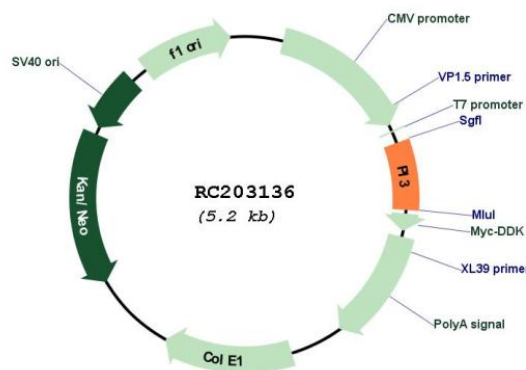


[View online »](#)

Cloning Scheme:



Plasmid Map:



ACCN: NM_002638

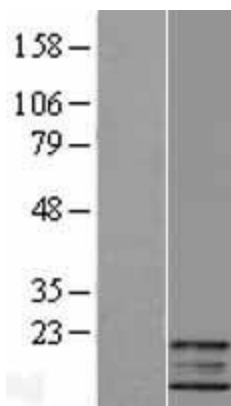
ORF Size: 351 bp

OTI Disclaimer: The molecular sequence of this clone aligns with the gene accession number as a point of reference only. However, individual transcript sequences of the same gene can differ through naturally occurring variations (e.g. polymorphisms), each with its own valid existence. This clone is substantially in agreement with the reference, but a complete review of all prevailing variants is recommended prior to use. [More info](#)

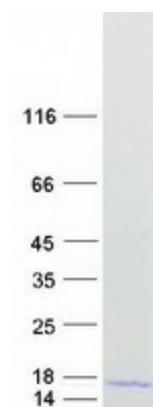
OTI Annotation: This clone was engineered to express the complete ORF with an expression tag. Expression varies depending on the nature of the gene.

Components:	The ORF clone is ion-exchange column purified and shipped in a 2D barcoded Matrix tube containing 10ug of transfection-ready, dried plasmid DNA (reconstitute with 100 ul of water).
Reconstitution Method:	<ol style="list-style-type: none">1. Centrifuge at 5,000xg for 5min.2. Carefully open the tube and add 100ul of sterile water to dissolve the DNA.3. Close the tube and incubate for 10 minutes at room temperature.4. Briefly vortex the tube and then do a quick spin (less than 5000xg) to concentrate the liquid at the bottom.5. Store the suspended plasmid at -20°C. The DNA is stable for at least one year from date of shipping when stored at -20°C.
RefSeq:	NM_002638.4
RefSeq Size:	579 bp
RefSeq ORF:	354 bp
Locus ID:	5266
UniProt ID:	P19957
Cytogenetics:	20q13.12
Protein Families:	Secreted Protein, Transmembrane
MW:	12.3 kDa
Gene Summary:	This gene encodes an elastase-specific inhibitor that functions as an antimicrobial peptide against Gram-positive and Gram-negative bacteria, and fungal pathogens. The protein contains a WAP-type four-disulfide core (WFDC) domain, and is thus a member of the WFDC domain family. Most WFDC gene members are localized to chromosome 20q12-q13 in two clusters: centromeric and telomeric. This gene belongs to the centromeric cluster. Expression of this gene is upregulated by bacterial lipopolysaccharides and cytokines. [provided by RefSeq, Oct 2014]

Product images:



Western blot validation of overexpression lysate (Cat# [LY400936]) using anti-DDK antibody (Cat# [TA50011-100]). Left: Cell lysates from untransfected HEK293T cells; Right: Cell lysates from HEK293T cells transfected with RC203136 using transfection reagent MegaTran 2.0 (Cat# [TT210002]).



Coomassie blue staining of purified PI3 protein (Cat# [TP303136]). The protein was produced from HEK293T cells transfected with PI3 cDNA clone (Cat# RC203136) using MegaTran 2.0 (Cat# [TT210002]).