

## Product datasheet for **RC203135**

### GCDFP 15 (PIP) (NM\_002652) Human Tagged ORF Clone

#### Product data:

**Product Type:** Expression Plasmids  
**Product Name:** GCDFP 15 (PIP) (NM\_002652) Human Tagged ORF Clone  
**Tag:** Myc-DDK  
**Symbol:** GCDFP 15  
**Synonyms:** GCDFP-15; GCDFP15; GPIP4  
**Mammalian Cell Selection:** Neomycin  
**Vector:** pCMV6-Entry (PS100001)  
**E. coli Selection:** Kanamycin (25 ug/mL)  
**ORF Nucleotide Sequence:** >RC203135 ORF sequence  
Red=Cloning site Blue=ORF Green=Tags(s)

TTTTGTAATACGACTCACTATAGGGCGGCCGGAATTCGTCGACTGGATCCGGTACCGAGGAGATCTGCC  
GCC**CGATCGCC**

ATGCGCTTGCTCCAGCTCCTGTTTCAGGGCCAGCCCTGCCACCCTGCTCCTGGTTCTCTGCCTGCAGTTGG  
GGGCCAACAAAGCTCAGGACAACACTCGGAAGATCATAATAAAGAATTTGACATCCCAAGTCAGTACG  
TCCAAATGACGAAGTCACTGCAGTGCTTGCAGTCAAACAGAATTGAAAGAATGCATGGTGGTTAAACT  
TACCTCATTAGCAGCATCCCTCTACAAGGTGCATTTAACTATAAGTATACTGCCTGCCTATGTGACGACA  
ATCCAAAAACCTTCTACTGGGACTTTTACACCAACAGAAGTGTGCAAATTGCAGCCGTCGTTGATGTTAT  
TCGGGAATTAGGCATCTGCCCTGATGATGCTGCTGTAATCCCCATCAAAAACAACCGTTTTATACTATT  
GAAATCCTAAAGGTAGAA

**ACGCGT**ACGCGGCCGCTCGAGCAGAACTCATCTCAGAAGAGGATCTGGCAGCAAATGATATCCTGGATT  
ACAAGGATGACGACGATAAGGTTTAA

**Protein Sequence:** >RC203135 protein sequence  
Red=Cloning site Green=Tags(s)

MRLQLLFRASPATLLLVLCLQLGANKAQDNTRKIIKKNFDIPKSVRPNDEVTAVLAVQTELKECMVVK  
YLISSIPLQGFNYKYTACLDDNPKTFYWFYTNRTVQIAAVVDVIRELGICPDDAAVPIKNNRFYTI  
EILKVE

**TR**TRPLEQKLISEEDLAANDILDYKDDDDKV

**Chromatograms:** [https://cdn.origene.com/chromatograms/mk6055\\_d03.zip](https://cdn.origene.com/chromatograms/mk6055_d03.zip)



[View online »](#)

Restriction Sites: SgfI-MluI

Cloning Scheme:



ACCN: NM\_002652

ORF Size: 438 bp

OTI Disclaimer: The molecular sequence of this clone aligns with the gene accession number as a point of reference only. However, individual transcript sequences of the same gene can differ through naturally occurring variations (e.g. polymorphisms), each with its own valid existence. This clone is substantially in agreement with the reference, but a complete review of all prevailing variants is recommended prior to use. [More info](#)

OTI Annotation: This clone was engineered to express the complete ORF with an expression tag. Expression varies depending on the nature of the gene.

Components: The ORF clone is ion-exchange column purified and shipped in a 2D barcoded Matrix tube containing 10ug of transfection-ready, dried plasmid DNA (reconstitute with 100 ul of water).

Reconstitution Method:

1. Centrifuge at 5,000xg for 5min.
2. Carefully open the tube and add 100ul of sterile water to dissolve the DNA.
3. Close the tube and incubate for 10 minutes at room temperature.
4. Briefly vortex the tube and then do a quick spin (less than 5000xg) to concentrate the liquid at the bottom.
5. Store the suspended plasmid at -20°C. The DNA is stable for at least one year from date of shipping when stored at -20°C.

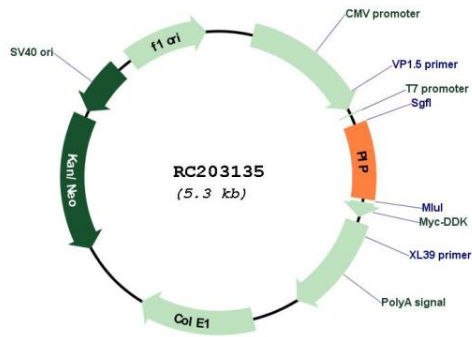
RefSeq: [NM\\_002652.3](#)

RefSeq Size: 591 bp

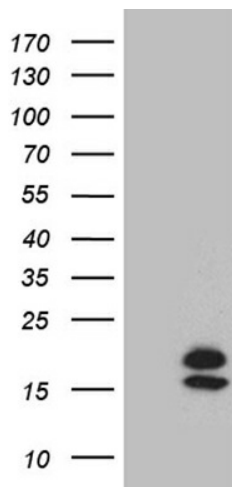
RefSeq ORF: 441 bp

Locus ID: 5304

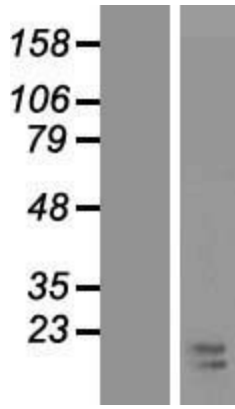
**UniProt ID:** [P12273](#)  
**Cytogenetics:** 7q34  
**Protein Families:** Secreted Protein  
**MW:** 16.6 kDa

**Product images:**


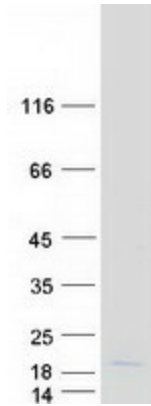
Circular map for RC203135



HEK293T cells were transfected with the pCMV6-ENTRY control (Cat# [PS100001], Left lane) or pCMV6-ENTRY PIP (Cat# RC203135, Right lane) cDNA for 48 hrs and lysed. Equivalent amounts of cell lysates (5 ug per lane) were separated by SDS-PAGE and immunoblotted with anti-PIP. (1:5(Cat# [TA801704]). Positive lysates [LY419186] (100ug) and [LC419186] (20ug) can be purchased separately from OriGene.



Western blot validation of overexpression lysate (Cat# [LY419186]) using anti-DDK antibody (Cat# [TA50011-100]). Left: Cell lysates from untransfected HEK293T cells; Right: Cell lysates from HEK293T cells transfected with RC203135 using transfection reagent MegaTran 2.0 (Cat# [TT210002]).



Coomassie blue staining of purified PIP protein (Cat# [TP303135]). The protein was produced from HEK293T cells transfected with PIP cDNA clone (Cat# RC203135) using MegaTran 2.0 (Cat# [TT210002]).