

Product datasheet for **RC203134**

PSG5 (NM_002781) Human Tagged ORF Clone

Product data:

Product Type:	Expression Plasmids
Product Name:	PSG5 (NM_002781) Human Tagged ORF Clone
Tag:	Myc-DDK
Symbol:	PSG5
Synonyms:	FL-NCA-3; PSG
Mammalian Cell Selection:	Neomycin
Vector:	pCMV6-Entry (PS100001)
E. coli Selection:	Kanamycin (25 ug/mL)
ORF Nucleotide Sequence:	>RC203134 ORF sequence Red=Cloning site Blue=ORF Green=Tags(s)

TTTTGTAATACGACTCACTATAGGGCGGCCGGAATTCGTCGACTGGATCCGGTACCGAGGAGATCTGCC
GCC**CGCATCGCC**

ATGGGGCCCTCTCAGCCCTCCCTGCACACAGCACATCACCTGGAAGGGGGTCTGCTCACAGCATCAC
TTTTAACTTCTGGAACCTGCCTATCACTGCTCAAGTCACGATTGAAGCCCTGCCACCCAAAGTTCCGA
GGGAAGGATGTTCTTCTACTTGTCCACAATTTGCCTCAGAATCTTGCTGGCTACATCTGGTACAAAGGA
CAACTGATGGACCTCTACCATTACATTACATCATATGTAGTAGACGGTCAAATAAATATATATGGGCCTG
CATACACTGGACGAGAAACAGTATATTCCAATGCATCCCTGCTGATCCAGAATGTCACCCGGGAAGACGC
AGGATCCTATACCTTACACATCATAAAGCGAGGTGATAGGACTAGAGGAGTAACTGGATATTTACCTTC
AACTTATACCTGAAGCTGCCAAGCCCTACATCACCATCAACAACCTCAAAACCCAGGGAGAATAAGGATG
TCTTAGCCTTACCTGTGAACCTAAGAGTGAGAACTACACCTACATTTGGTGGCTAAATGGTCAGAGCCT
CCCGGTCACTCCAGGGTAAAGCAACCCATTGAAAACAGGATCCTCATTCTACCCAGTGTACAGAGAAAT
GAAACAGGACCCTATGAATGTGAAATACGGGACCGAGATGGTGGCATGCACAGTGACCCAGTCACCCCTGA
ATGTCCTCTATGGTCCAGACCTCCCAGCATTTACCCTTCATTACCTATTACCGTTCAGGAGAAAACCT
CTACTTGTCTGCTTCGCGGAATCTAACCACCCGAGAGTATTTTTGGACAATTAATGGGAAGTTTCAG
CAATCAGGACAAAAGCTCTATCCCCAAATTAACAAGCATAGAGGGCTCTATACTTGCTCTGTTC
GTAACCTAGCCACTGGCAAGGAAAGCTCAAATCCATGACAGTCGAAGTCTCTGCTCCTTCAGGAATAGG
ACGTCTTCTCTCCTTAATCCAATA

ACGCGTACGCGGCCGCTCGAGCAGAACTCATCTCAGAAGAGGATCTGGCAGCAAATGATATCCTGGATT
ACAAGGATGACGACGATAAGGTTTAA



[View online »](#)

Protein Sequence: >RC203134 protein sequence
 Red=Cloning site Green=Tags(s)

MGPLSAPPCTQHITWKGVLLTASLLNFWNLPITAQVTIEALPPKVSEKDVLLL VHNLPQNLAGYIWKYK
 QLMDLYHYITSYVVDGQINIYGPAYTGRETIVYSNASLLIQNVTREDAGSYTLHIKRGDRTRGVTYFTF
 NLYLKLKPKPYITINNSKPRENKDVLAFATCEPKSENYTYIWWLNGQSLPVS PRVKQPIENRILILPSVTRN
 ETGPYECEIRDRDGMHSDPVTNLNLYGPDLP S IYPSFTYYRSGENLYLSCFAESNPPAEYFWTINGKFQ
 QSGQKLSIPQITTKHRGLYTC SVRNSATGKESSK SMTVEVSAPSIGIRLPLL NPI

TRTRPLEQKLISEEDLAANDILDYKDDDDKV

Chromatograms: https://cdn.origene.com/chromatograms/mk6575_g07.zip

Restriction Sites: SgfI-MluI

Cloning Scheme:

Cloning sites used for ORF Shuttling:



* The last codon before the Stop codon of the ORF

ACCN: NM_002781

ORF Size: 1005 bp

OTI Disclaimer: The molecular sequence of this clone aligns with the gene accession number as a point of reference only. However, individual transcript sequences of the same gene can differ through naturally occurring variations (e.g. polymorphisms), each with its own valid existence. This clone is substantially in agreement with the reference, but a complete review of all prevailing variants is recommended prior to use. [More info](#)

OTI Annotation: This clone was engineered to express the complete ORF with an expression tag. Expression varies depending on the nature of the gene.

Components: The ORF clone is ion-exchange column purified and shipped in a 2D barcoded Matrix tube containing 10ug of transfection-ready, dried plasmid DNA (reconstitute with 100 ul of water).

Reconstitution Method:

1. Centrifuge at 5,000xg for 5min.
2. Carefully open the tube and add 100ul of sterile water to dissolve the DNA.
3. Close the tube and incubate for 10 minutes at room temperature.
4. Briefly vortex the tube and then do a quick spin (less than 5000xg) to concentrate the liquid at the bottom.
5. Store the suspended plasmid at -20°C. The DNA is stable for at least one year from date of shipping when stored at -20°C.

RefSeq: [NM_002781.2](#), [NP_002772.2](#)

RefSeq Size: 1669 bp

RefSeq ORF: 1008 bp

Locus ID: 5673

UniProt ID: [Q15238](#)

Cytogenetics: 19q13.31

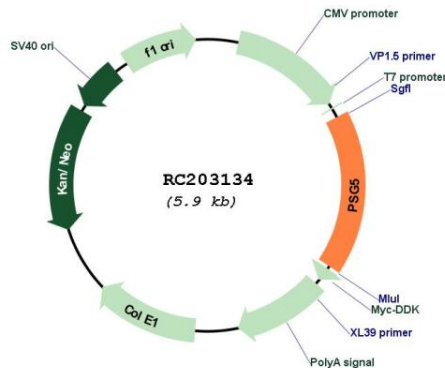
Domains: ig, IGc2, IG

Protein Families: Secreted Protein

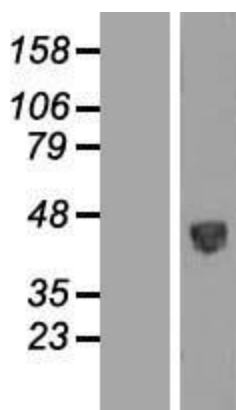
MW: 37.7 kDa

Gene Summary: The human pregnancy-specific glycoproteins (PSGs) are a group of molecules that are mainly produced by the placental syncytiotrophoblasts during pregnancy. PSGs comprise a subgroup of the carcinoembryonic antigen (CEA) family, which belongs to the immunoglobulin superfamily. For additional general information about the PSG gene family, see PSG1 (MIM 176390).[supplied by OMIM, Oct 2009]

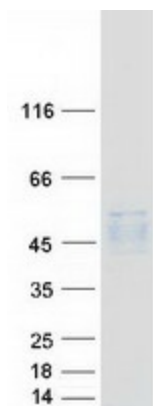
Product images:



Circular map for RC203134



Western blot validation of overexpression lysate (Cat# [LY427103]) using anti-DDK antibody (Cat# [TA50011-100]). Left: Cell lysates from untransfected HEK293T cells; Right: Cell lysates from HEK293T cells transfected with [RC225493] using transfection reagent MegaTran 2.0 (Cat# [TT210002]).



Coomassie blue staining of purified PSG5 protein (Cat# [TP303134]). The protein was produced from HEK293T cells transfected with PSG5 cDNA clone (Cat# RC203134) using MegaTran 2.0 (Cat# [TT210002]).