

Product datasheet for RC203130

SR1 (SRI) (NM_003130) Human Tagged ORF Clone

Product data:

Product Type: Expression Plasmids
Product Name: SR1 (SRI) (NM_003130) Human Tagged ORF Clone
Tag: Myc-DDK
Symbol: SR1
Synonyms: CP-22; CP22; SCN; V19
Mammalian Cell Selection: Neomycin
Vector: pCMV6-Entry (PS100001)
E. coli Selection: Kanamycin (25 ug/mL)
ORF Nucleotide Sequence: >RC203130 ORF sequence
 Red=Cloning site Blue=ORF Green=Tags(s)

TTTTGTAATACGACTCACTATAGGGCGCCGGGAATTCGTCGACTGGATCCGGTACCGAGGAGATCTGCC
GCC**CGATCGCC**

ATGGCGTACCCGGGGCATCCTGGCGCCGGCGGGTACTACCCAGGCGGGTATGGAGGGGCTCCCGGAG
GGCCTGCGTTTCCCGGACAACTCAGGATCCGCTGTATGGTTACTTTGCTGCTGTAGCTGGACAGGATGG
GCAGATAGATGCTGATGAATTGCAGAGATGTCTGACACAGTCTGGCATTGCTGGAGGATACAAACCTTTT
AACCTGGAGACTTGCCGGCTTATGGTTCAATGCTGGATAGAGATATGTCTGGCACAATGGGTTTCAATG
AATTTAAAGAACTCTGGGCTGTACTGAATGGCTGGAGACAACACTTTATCAGTTTGACTGACAGGAG
TGGAACAGTAGACCCACAAGAATTGCAGAAGCCCTGACAACAATGGGATTTAGGTTGAGTCCCGAGGCT
GTGAATCAATTGCAAAACGATACAGCACCAATGGAAAGATCACCTTCGACGACTACATCGCCTGCTGCG
TCAAACAGAGGGCTTTACAGACAGCTTTCGAAGACGGGATACTGCTCAGCAAGGTGTTGTGAATTTCC
ATATGATGATTTCAATCAATGTGTCATGAGTGT

ACGCGTACGCGGCCGCTCGAGCAGAACTCATCTCAGAAGAGGATCTGGCAGCAAATGATATCCTGGATT
ACAAGGATGACGACGATAAGGTTTAA

Protein Sequence: >RC203130 protein sequence
 Red=Cloning site Green=Tags(s)

MAYPGHPGAGGGYYPGGYGGAPGGPAFPGQTQDPLYGYFAAVAGQDQIDADELQRCLTQSGIAGGYKPF
NLETCLMVSMLDRDMSGTMGFNEFKELWAVLNGWRQHFISFDTDRSGTVDPQELQKALTTMGFRLSPQA
VNSIAKRYSTNGKITFDDYIACCVKLRALTDSFRRRDTAQQGVVNFYDDFIQCVMSV

TRTRPLEQKLISEEDLAANDILDYKDDDDKV



[View online »](#)

UniProt ID: [P30626](#)

Cytogenetics: 7q21.12

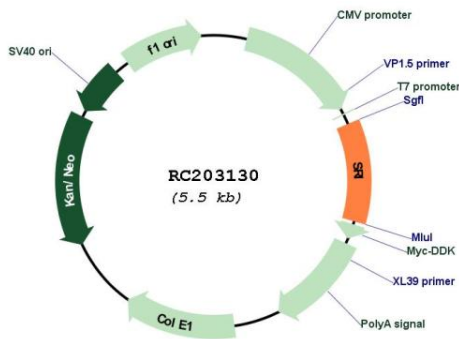
Domains: EFh

Protein Families: Druggable Genome

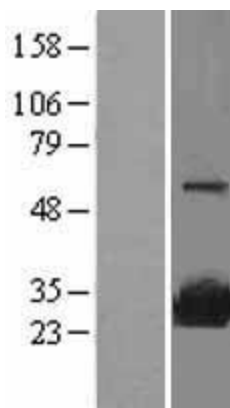
MW: 21.7 kDa

Gene Summary: This gene encodes a calcium-binding protein with multiple E-F hand domains that relocates from the cytoplasm to the sarcoplasmic reticulum in response to elevated calcium levels. In addition to regulating intracellular calcium homeostasis it also modulates excitation-contraction coupling in the heart. Alternative splicing results in multiple transcript variants encoding distinct proteins. Multiple pseudogenes exist for this gene. [provided by RefSeq, Mar 2012]

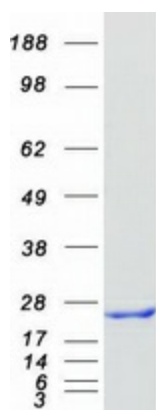
Product images:



Circular map for RC203130



Western blot validation of overexpression lysate (Cat# [LY401087]) using anti-DDK antibody (Cat# [TA50011-100]). Left: Cell lysates from untransfected HEK293T cells; Right: Cell lysates from HEK293T cells transfected with RC203130 using transfection reagent MegaTran 2.0 (Cat# [TT210002]).



Coomassie blue staining of purified SRI protein (Cat# [TP303130]). The protein was produced from HEK293T cells transfected with SRI cDNA clone (Cat# RC203130) using MegaTran 2.0 (Cat# [TT210002]).