

Product datasheet for RC203128

Tetranectin (CLEC3B) (NM_003278) Human Tagged ORF Clone

Product data:

Product Type: Expression Plasmids
Product Name: Tetranectin (CLEC3B) (NM_003278) Human Tagged ORF Clone
Tag: Myc-DDK
Symbol: Tetranectin
Synonyms: TN; TNA
Mammalian Cell Selection: Neomycin
Vector: pCMV6-Entry (PS100001)
E. coli Selection: Kanamycin (25 ug/mL)
ORF Nucleotide Sequence: >RC203128 ORF sequence
 Red=Cloning site Blue=ORF Green=Tags(s)

TTTTGTAATACGACTCACTATAGGGCGGCCGGAATTCGTCGACTGGATCCGGTACCGAGGAGATCTGCC
 GCC**CGATCGCC**

ATGGAGCTCTGGGGGCCTACCTCCTCCTCTGCCTCTTCTCCCTCCTGACCCAGGTCACCACCGAGCCAC
 CAACCCAGAAGCCCAAGAAGATTGTAATGCCAAGAAAGATGTTGTGAACACAAAGATGTTTGAGGAGCT
 CAAGAGCCGTCTGGACACCCTGGCCAGGAGGTGGCCCTGCTGAAGGAGCAGCAGGCCCTGCAGACGGTC
 TGCCTGAAGGGGACCAAGGTGCACATGAAATGCTTTCTGGCCTTACCCAGACGAAGACCTCCACGAGG
 CCAGCGAGGACTGCATCTCGCGGGGGCACCCCTGAGCACCCCTCAGACTGGCTCGGAGAACGACGCCCT
 GTATGAGTACCTGCGCCAGAGCGTGGGCAACGAGGCCGAGATCTGGCTGGGCCTAACGACATGGCGGCC
 GAGGGCACCTGGGTGGACATGACCGGCGCCCGCATCGCCTACAAGAACTGGGAGACTGAGATCACCGCGC
 AACCCGATGGCGCAAGACCGAGAAGTGCAGCGTCTGTGAGCGCGGCCAACGGCAAGTGGTTCGACAA
 GCGCTGCCGCGATCAGCTGCCCTACATCTGCCAGTTCGGGATCGTG

ACGCGTACGCGGGCCGCTCGAGCAGAACTCATCTCAGAAGAGGATCTGGCAGCAAATGATATCCTGGATT
 ACAAGGATGACGACGATAAGGTTTAA

Protein Sequence: >RC203128 protein sequence
 Red=Cloning site Green=Tags(s)

MELWGAYLLLCLFSLLTQVTPEPTQPKKIVNAKDVVNTKMFEELEKSRDLTAEVALLKEQQALQTV
 CLKGKTVHMKCFLAFTQTKTFHEASEDCISRGGLTSTPQTSENDALYEYLRQSVGNEAEIWLGLNDMAA
 EGTWVDMTGARIAYKNWETEITAQPDGGKTENCAVLSGAANGKWFDRKCRDQLPYICQFGIV

TRTRPLEQKLISEEDLAANDILDYKDDDDKV



[View online »](#)

Chromatograms: https://cdn.origene.com/chromatograms/mk6575_a08.zip

Restriction Sites: SgfI-MluI

Cloning Scheme:



ACCN: NM_003278

ORF Size: 606 bp

OTI Disclaimer: The molecular sequence of this clone aligns with the gene accession number as a point of reference only. However, individual transcript sequences of the same gene can differ through naturally occurring variations (e.g. polymorphisms), each with its own valid existence. This clone is substantially in agreement with the reference, but a complete review of all prevailing variants is recommended prior to use. [More info](#)

OTI Annotation: This clone was engineered to express the complete ORF with an expression tag. Expression varies depending on the nature of the gene.

Components: The ORF clone is ion-exchange column purified and shipped in a 2D barcoded Matrix tube containing 10ug of transfection-ready, dried plasmid DNA (reconstitute with 100 ul of water).

Reconstitution Method:

1. Centrifuge at 5,000xg for 5min.
2. Carefully open the tube and add 100ul of sterile water to dissolve the DNA.
3. Close the tube and incubate for 10 minutes at room temperature.
4. Briefly vortex the tube and then do a quick spin (less than 5000xg) to concentrate the liquid at the bottom.
5. Store the suspended plasmid at -20°C. The DNA is stable for at least one year from date of shipping when stored at -20°C.

RefSeq: [NM_003278.1](#), [NP_003269.1](#)

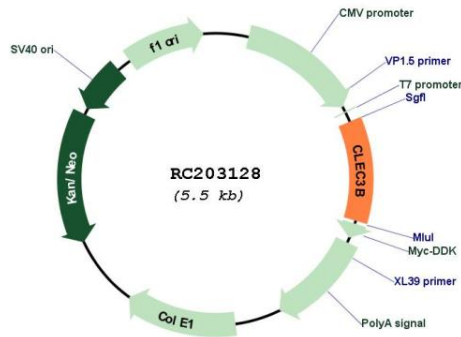
RefSeq Size: 886 bp

RefSeq ORF: 609 bp

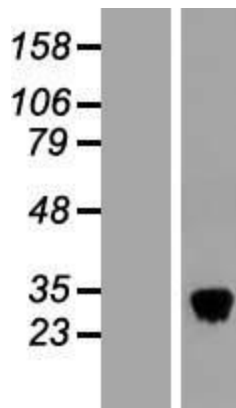
Locus ID: 7123

UniProt ID: [P05452](#)
Cytogenetics: 3p21.31
Protein Families: Secreted Protein
MW: 22.6 kDa
Gene Summary: Tetranectin binds to plasminogen and to isolated kringle 4. May be involved in the packaging of molecules destined for exocytosis.[UniProtKB/Swiss-Prot Function]

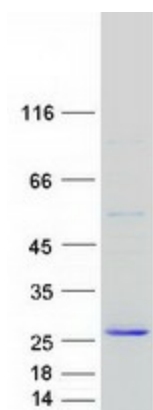
Product images:



Circular map for RC203128



Western blot validation of overexpression lysate (Cat# [LY418793]) using anti-DDK antibody (Cat# [TA50011-100]). Left: Cell lysates from untransfected HEK293T cells; Right: Cell lysates from HEK293T cells transfected with RC203128 using transfection reagent MegaTran 2.0 (Cat# [TT210002]).



Coomassie blue staining of purified CLEC3B protein (Cat# [TP303128]). The protein was produced from HEK293T cells transfected with CLEC3B cDNA clone (Cat# RC203128) using MegaTran 2.0 (Cat# [TT210002]).