

## Product datasheet for **RC203117**

### Nuclear Matrix Protein p84 (THOC1) (NM\_005131) Human Tagged ORF Clone

#### Product data:

Product Type:	Expression Plasmids
Product Name:	Nuclear Matrix Protein p84 (THOC1) (NM_005131) Human Tagged ORF Clone
Tag:	Myc-DDK
Symbol:	Nuclear Matrix Protein p84
Synonyms:	HPR1; P84; P84N5
Mammalian Cell Selection:	Neomycin
Vector:	pCMV6-Entry (PS100001)
E. coli Selection:	Kanamycin (25 ug/mL)



[View online »](#)

ORF Nucleotide  
Sequence:

>RC203117 ORF sequence  
Red=Cloning site Blue=ORF Green=Tags(s)

TTTTGTAATACGACTCACTATAGGGCGGCCGGAATTCGTCGACTGGATCCGGTACCGAGGAGATCTGCC  
GCC**CGCATCGCC**

ATGTCTCCGACGCCGCCCTCTTCAGTTTGCCCGAAGCGCGGACGCGTTTACGAAGTCTACCAGAGAGG  
CCTTGAACAACAAAAACATCAAGCCATTGTTAAGTACCTTCAGCCAGGTACCTGGCAGTGAAAAATGAAAA  
AAAATGTACCTTGACCAAGCTTTCAGAGGTATTCTAGAAGAAGAAATTATAAATCATTTCATCATGTGAA  
AACGTTTTAGCTATTATTTCTCTTGCTATTGGGGGAGTAACTGAAGGTATTTGTACCGCATCTACACCTT  
TTGTATTGTTGGGAGATGTTTTGGATTGTCTTCTTTGGATCAGTGTGACACAATATTCACCTTTTGTGGA  
AAAAATGTTGCTACTTGAAATCAAATACATTCTATTCTGTGGGAAAAATTACTTACTACGTATGTGC  
AATGATCTCCTAAGAAGATTGTCTAAATCCCAGAATACAGTCTTCTGTGGACGGATTACGCTCTTTTTGG  
CCAGGCTTTTCCCTCTGTCTGAGAAATCAGGTCTTAACCTGCAGAGTCAGTTAATCTGGAAAATGTCAC  
TGTTTTCAATACAAATGAGCAGGAAAGCACCTGGGTGAGAAGCACACTGAAGATAGAGAAGAAGGAATG  
GATGTAGAAGAAGCGCAAATGGGAGATGAGGAAGCTCCAACAACGTGCTCTATTCCAATTGATTACAACC  
TGTATCGAAAATTCTGGTCACTTCAGGATTACTTCAGGAACCCCTGTGCAATGCTATGAGAAGATTTTCATG  
GAAAACCTTTCTCAAGTATTCTGAAGAAGTTTTAGCTGTTTTTAAGAGTTATAAATTAGATGATACTCAG  
GCCTCAAGAAAAAAGATGGAAGAATTGAAAACAGGAGGAGAACATGTATATTTTGCAAAATTTTAAACA  
GTGAAAAGCTGATGGATTTACAACCTGAGTGACAGTAACTTTCTGTCGACACATCCTGTTGCAGTATCTCAT  
TTTATTTCCAATATCTCAAGGGCCAGGTCAAATTCAAAAGTTCAAACCTATGTTTTAACTGATGAGCAATCA  
CTTTGGATTGAAGATACTACAAAATCAGTTTATCAACTACTATCTGAAAACCCCCCGATGGAGAAAAGAT  
TTTCAAAGATGGTAGAGCATATATTAACACTGAAGAAAACCTGGAACCTCGTGGAAAAATGAAGTTGCCC  
AAGTTTTGTGAAAGAAAAGAACATCAGATACCAAACCTACGAGAATAATTGGAAGAGAACAGCACCCGAG  
GACTTCTAGGAAAGGCCACCAAAAAAATTCTGATGGGAAATGAGGAGTTAACAAGGCTTTGGAATC  
TTTGCCCTGATAATATGGAAGCCTGTAATCAGAGACAAGGGAACACATGCCCACTTTGGAGGAATTCCT  
TGAAGAAGCCATTGAACAGGCAGACCCTGAAAATATGGTGGAAAATGAATATAAGGCTGTGAACAATTCA  
AATTATGGTTGGAGAGCCCTGAGACTATTAGCACGGAGAAGCCCTCACTTCTCCAGCCAACCAACCAGC  
AGTTTAAAAGTTTACCAGAATATCTTGAAAATATGGTAATAAAGCTAGCCAAGGAATTACCGCTCCTTC  
TGAAGAAATAAAAAACAGGTGAGGATGAAGATGAGGAAGATAATGATGCTCTACTGAAGGAAAATGAAAGT  
CCTGATGTTGCGGAGACAAACCTGTAACAGGAGAACAAATAGAGGTATTTGCCAACAAGCTGGGTGAAC  
AATGGAAGATTCTGGCTCCCTACTTGAAAATGAAAGACTCAGAAATTAGGCAGATTGAGTGTGACAGTGA  
AGACATGAAGATGAGAGCTAAGCAGCTCCTGGTTGCCTGGCAAGATCAAGAGGGAGTTTCATGCAACACCT  
GAGAATCTGATTAATGCACTGAATAAGTCTGGATTAAGTGACCTTGCAGAAAAGTCTAACTAATGACAATG  
AGACAAATAGT

**ACGCGT**ACGCGGCCGCTCGAGCAGAAACTCATCTCAGAAGAGGATCTGGCAGCAAATGATATCCTGGATT  
ACAAGGATGACGACGATAAGGTTTAA

Protein Sequence: >RC203117 protein sequence  
Red=Cloning site Green=Tags(s)

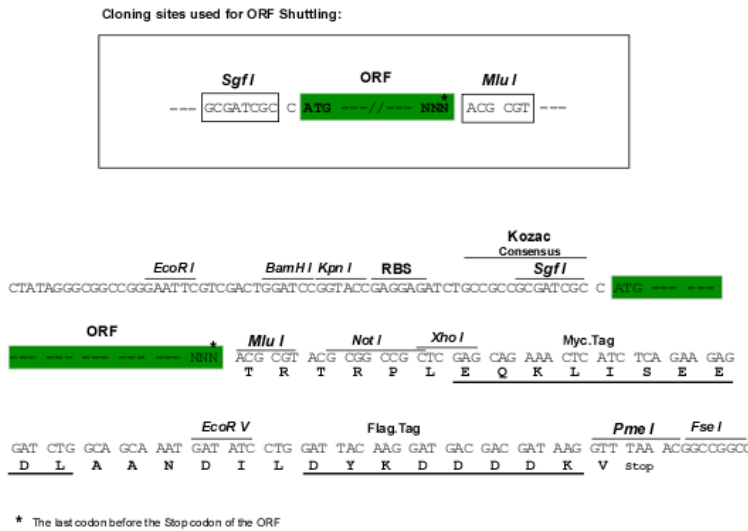
```
MSPTPLFLSPEARTRFTKSTREALNNKNIKPLLSTFSQVPGSENEKKCTLDQAFRGILEEEIINHSSCE
NVLAIISLAIGGVTEGICTASTPFVLLGDVLDCLPLDQCDTIFTFVEKNVATWKSNTFYASAGKNYLLRMC
NDLLRRLSKSQNTVFCGRIGLFLARLFLPLESEKSLNLQSQFNLENVTVFNTNEQESTLGGKHEDREEGM
DVEEGEMGDEEAPTTCSSIPIDYNLYRKFWSLQDYFRNPVQCYEKISWKTFLKYSEEVLAVFKSYKLDLDTQ
ASRKKMEELKTGGEHVYFAKFLTSEKLMQLSDSNFRRHILLQYLILFQYLKGGQVFKSSNYVLTDEQS
LWIEDTTKSVYQLLSENPPDGERFSKMVEHILNTEENWNSWKNEGCPSFVKERTSDTKPTRIIRKRTAPE
DFLGKGPTRKILMGNEELTRLWNLCPDNMEACKSETREHMPTLEEFEEAIEQADPENMVENYKAVNNS
NYGWRALRLLARRSPHFQPTNQFKSLPEYLENMVIKLAKELPPPSEEIKTGEDEDEEDNDALLKENES
PDVRRDKPVTGEQIEVFANKLGEQWKILAPYLEMKDSEIRQIECDSEDMKMRKQLLVAWQDQEGVHATP
ENLINALNKSGLSDLAESLTNDNETNS
```

TRTRPLEQKLISEEDLANDILDYKDDDDKV

Chromatograms: [https://cdn.origene.com/chromatograms/mk6153\\_g10.zip](https://cdn.origene.com/chromatograms/mk6153_g10.zip)

Restriction Sites: SgfI-MluI

Cloning Scheme:



ACCN: NM\_005131

ORF Size: 1971 bp

OTI Disclaimer: The molecular sequence of this clone aligns with the gene accession number as a point of reference only. However, individual transcript sequences of the same gene can differ through naturally occurring variations (e.g. polymorphisms), each with its own valid existence. This clone is substantially in agreement with the reference, but a complete review of all prevailing variants is recommended prior to use. [More info](#)

OTI Annotation: This clone was engineered to express the complete ORF with an expression tag. Expression varies depending on the nature of the gene.

Components: The ORF clone is ion-exchange column purified and shipped in a 2D barcoded Matrix tube containing 10ug of transfection-ready, dried plasmid DNA (reconstitute with 100 ul of water).

**Reconstitution Method:**

1. Centrifuge at 5,000xg for 5min.
2. Carefully open the tube and add 100ul of sterile water to dissolve the DNA.
3. Close the tube and incubate for 10 minutes at room temperature.
4. Briefly vortex the tube and then do a quick spin (less than 5000xg) to concentrate the liquid at the bottom.
5. Store the suspended plasmid at -20°C. The DNA is stable for at least one year from date of shipping when stored at -20°C.

**RefSeq:** [NM\\_005131.3](#)

**RefSeq Size:** 2133 bp

**RefSeq ORF:** 1974 bp

**Locus ID:** 9984

**UniProt ID:** [Q96FV9](#)

**Cytogenetics:** 18p11.32

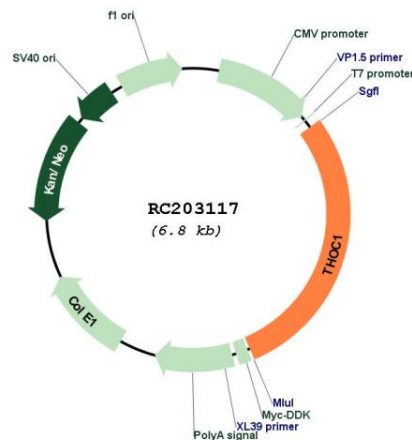
**Domains:** DEATH

**Protein Pathways:** Proteasome, Spliceosome

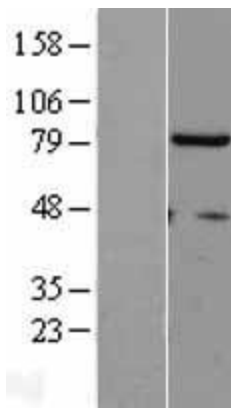
**MW:** 75.7 kDa

**Gene Summary:** HPR1 is part of the TREX (transcription/export) complex, which includes TEX1 (MIM 606929), THO2 (MIM 300395), ALY (MIM 604171), and UAP56 (MIM 142560).[supplied by OMIM, Nov 2010]

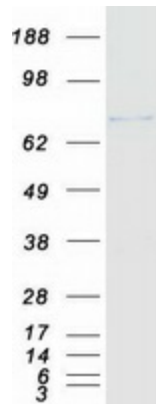
### Product images:



Circular map for RC203117



Western blot validation of overexpression lysate (Cat# [LY401574]) using anti-DDK antibody (Cat# [TA50011-100]). Left: Cell lysates from untransfected HEK293T cells; Right: Cell lysates from HEK293T cells transfected with RC203117 using transfection reagent MegaTran 2.0 (Cat# [TT210002]).



Coomassie blue staining of purified THOC1 protein (Cat# [TP303117]). The protein was produced from HEK293T cells transfected with THOC1 cDNA clone (Cat# RC203117) using MegaTran 2.0 (Cat# [TT210002]).