

## Product datasheet for RC203114

### ELK3 (NM\_005230) Human Tagged ORF Clone

#### Product data:

|                           |   |
|---------------------------|---|
| Product Type:             | Expression Plasmids   |
| Product Name:             | ELK3 (NM_005230) Human Tagged ORF Clone                           |
| Tag:                      | Myc-DDK   |
| Symbol:                   | ELK3  |
| Synonyms:                 | ERP; NET; SAP-2; SAP2   |
| Mammalian Cell Selection: | Neomycin  |
| Vector:                   | pCMV6-Entry (PS100001)  |
| E. coli Selection:        | Kanamycin (25 ug/mL)  |
| ORF Nucleotide Sequence:  | >RC203114 ORF sequence<br>Red=Cloning site Blue=ORF Green=Tags(s) |

TTTTGTAATACGACTCACTATAGGGCGGCCGGAATTCGTCGACTGGATCCGGTACCGAGGAGATCTGCC  
GCC**CGATCGCC**

ATGGAGAGTGCAATCACGCTGTGGCAGTTCCTGTTGCAGTTGCTGCTGGATCAGAAACATGAGCATTGGA  
TCTGCTGGACCTCGAACGATGGTGAATCAAGCTCCTCAAAGCAGAAGAAGTGGCCAAGCTGTGGGGACT  
CCGAAAAACAAAACAAATATGAACTATGATAAGCTGAGCAGAGCCCTGCGATACTATTATGACAAGAAC  
ATCATCAAGAAGGTGATCGGGCAGAAGTTGTGTACAAGTTGTCTTTCCCGGAGATCCTGAAGATGG  
ATCCTCACGCGGTGGAGATCAGCCGGGAGAGCCTTCTGCTGCAGGACAGCGACTGCAAGGCGTCTCCGGA  
GGCCCGCAGGCCCAAAACACGGCCTGGCCGCCCTCAGAAGCAGGAGCCGCAACGAATACATCCACTCA  
GGCCTGTACTCGTCTTACCATTAATTCCTGCAGAACCACCAGACGCCTTCAAGGCCATCAAGACGG  
AGAAGCTGGAGGAGCCGCCGAAGACAGCCCCCGTGGAAAGAAGTCAGGACTGTGATCAGGTTTGTGAC  
CAATAAACCCGACAAGCACGTCACCAGGCCGGTGGTGTCCCTGCCTTCCACGTCAGAGGCTGCGGGCGG  
TCCGCCTTCTGGCCTCGTCCGCTCGGCCAAGATCTCCTCTTAAATGTTGCCAAACGCTGCCAGTATTT  
CATCCGCCTCACCTTCTCATCTCGGTCCCGTCCCTGTCCCCAACTCACCCCTCCCTTCTGAACACAG  
AAGCCTCTTCTGGAGGCCGCTGCCATGACTCCGATTCCTGGAGCCCTTGAACCTGTCATCGGGCTCC  
AAGACCAAGTCTCCATCTTTCCCCAAAGGCCAAAAACCCAAAGGCTTGGAAATCTCAGCGCCCCGCG  
TGGTGTCTCCGGCACCGACATCGGCTCCATCGCCCTCAACAGCCAGCCCTCCCTCGGGATCCCTCAC  
CCCAGCCTTCTTACCAGCACAGACACCAATGGATTGCTTCTGACTCCGAGTCCACTGCTCTCCAGCATA  
CATTTCTGGAGCAGCCTTAGTCCAGTTGCTCCGCTGAGTCTGCCAGGCTGCAAGGGCCAAGCACGCTGT  
TCCAGTCCCCACACTGCTTAATGGCCACATGCCAGTGCCAAATCCCAGTCTGGACAGAGCTGCTTCTCC  
AGTACTGCTTTCTCAAACCTCTCAGAAATCC

**ACGCGT**ACGCGGCCGCTCGAGCAGAAACTCATCTCAGAAGAGGATCTGGCAGCAAATGATATCCTGGATT  
ACAAGGATGACGACGATAAGGTTTAA



[View online »](#)

**Protein Sequence:** >RC203114 protein sequence  
Red=Cloning site Green=Tags(s)

MESAITLWQFLLQLLLDQKHEHLICWTSNDGEFKLLKAEVAKLWGLRKNKTNMNYDKLSRALRYYYDKN  
 I IKKVIGQKFVYK FVSFPEILKMDPHAVEISRESLLLQSDCKASPEGREAHKHGLAALRSTSRNEYIHS  
 GLYSSFTINSLQNPDAFKAIKTEKLEPPEDSPPVEEVRTVIRFVTNKTDKHVTRPVVSLPSTSEAAAA  
 SAFLASSVSAKISSMLPNAASISSASPFSSRSPSLSPNSPLPSEHRSLFLEAACHDSDSLEPLNLSGS  
 KTKSPSLPPKAKPKGLEISAPPLVLSGTDIGSIALNSPALPSGSLTPAFFTAQTPNGLLLTPSPLSSI  
 HFWSSLSPVAPLSPARLQGPSTLFQFPTLLNGHMPVPIPSLDRAASPVLLSSNSQKS

TRTRPLEQKLISEEDLAANDILDYKDDDDKV

**Chromatograms:** [https://cdn.origene.com/chromatograms/mk6155\\_b02.zip](https://cdn.origene.com/chromatograms/mk6155_b02.zip)

**Restriction Sites:** SgfI-MluI

**Cloning Scheme:**



\* The last codon before the Stop codon of the ORF

**ACCN:** NM\_005230

**ORF Size:** 1221 bp

**OTI Disclaimer:** The molecular sequence of this clone aligns with the gene accession number as a point of reference only. However, individual transcript sequences of the same gene can differ through naturally occurring variations (e.g. polymorphisms), each with its own valid existence. This clone is substantially in agreement with the reference, but a complete review of all prevailing variants is recommended prior to use. [More info](#)

**OTI Annotation:** This clone was engineered to express the complete ORF with an expression tag. Expression varies depending on the nature of the gene.

**Components:** The ORF clone is ion-exchange column purified and shipped in a 2D barcoded Matrix tube containing 10ug of transfection-ready, dried plasmid DNA (reconstitute with 100 ul of water).

**Reconstitution Method:**

1. Centrifuge at 5,000xg for 5min.
2. Carefully open the tube and add 100ul of sterile water to dissolve the DNA.
3. Close the tube and incubate for 10 minutes at room temperature.
4. Briefly vortex the tube and then do a quick spin (less than 5000xg) to concentrate the liquid at the bottom.
5. Store the suspended plasmid at -20°C. The DNA is stable for at least one year from date of shipping when stored at -20°C.

**RefSeq:** [NM\\_005230.4](#)

**RefSeq Size:** 2180 bp

**RefSeq ORF:** 1224 bp

**Locus ID:** 2004

**UniProt ID:** [P41970](#)

**Cytogenetics:** 12q23.1

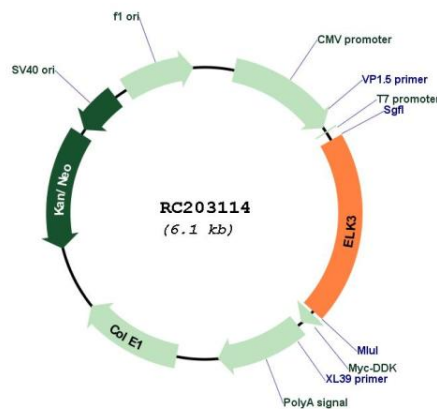
**Domains:** ETS

**Protein Families:** Transcription Factors

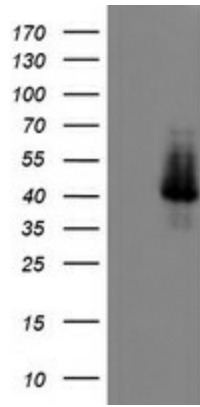
**MW:** 44.2 kDa

**Gene Summary:** This gene encodes a member of the ETS-domain transcription factor family and the ternary complex factor (TCF) subfamily. Proteins in this subfamily regulate transcription when recruited by serum response factor to bind to serum response elements. This protein is activated by signal-induced phosphorylation; studies in rodents suggest that it is a transcriptional inhibitor in the absence of Ras, but activates transcription when Ras is present. Alternate splicing results in multiple transcript variants. [provided by RefSeq, Jan 2015]

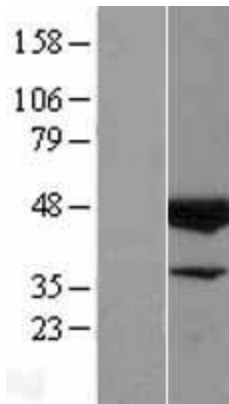
### Product images:



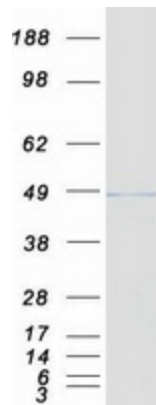
Circular map for RC203114



HEK293T cells were transfected with the pCMV6-ENTRY control (Cat# [PS100001], Left lane) or pCMV6-ENTRY ELK3 (Cat# RC203114, Right lane) cDNA for 48 hrs and lysed. Equivalent amounts of cell lysates (5 ug per lane) were separated by SDS-PAGE and immunoblotted with anti-ELK3 (Cat# [TA503603]). Positive lysates [LY401602] (100ug) and [LC401602] (20ug) can be purchased separately from OriGene.



Western blot validation of overexpression lysate (Cat# [LY401602]) using anti-DDK antibody (Cat# [TA50011-100]). Left: Cell lysates from untransfected HEK293T cells; Right: Cell lysates from HEK293T cells transfected with RC203114 using transfection reagent MegaTran 2.0 (Cat# [TT210002]).



Coomassie blue staining of purified ELK3 protein (Cat# [TP303114]). The protein was produced from HEK293T cells transfected with ELK3 cDNA clone (Cat# RC203114) using MegaTran 2.0 (Cat# [TT210002]).