

Product datasheet for **RC203108**

MPP6 (MPHOSPH6) (NM_005792) Human Tagged ORF Clone

Product data:

Product Type: Expression Plasmids
Product Name: MPP6 (MPHOSPH6) (NM_005792) Human Tagged ORF Clone
Tag: Myc-DDK
Symbol: MPP6
Synonyms: MPP; MPP-6; MPP6
Mammalian Cell Selection: Neomycin
Vector: pCMV6-Entry (PS100001)
E. coli Selection: Kanamycin (25 ug/mL)
ORF Nucleotide Sequence: >RC203108 ORF sequence
Red=Cloning site Blue=ORF Green=Tags(s)

TTTTGTAATACGACTCACTATAGGGCGGCCGGAATTCGTCGACTGGATCCGGTACCGAGGAGATCTGCC
GCC**CGATCGCC**

ATGGCGGCCGAGAGAAAGACAAAGTTGTCCAAGAATCTGCTGCGCATGAAGTTTATGCAAAGGGGACTGG
ACTCAGAAACCAAGAACTAGAAGAAGAAGAAAAGAAAATCATTAGTGAAGAGCACTGGTACTTGG
TTGCCAGAGCTTAAAGAGAAAGAGAGTTTCATAATAGAAGAGCAGAGTTTCTTACTATGTGAAGATCTT
CTCTATGGAAGAATGTCATTAGAGGATTAATCCTGAGGTTGAGAAATTGATGCTTCAGATGAATGCTA
AGCACAAGCAGAAGAAGTTGAAGATGAAACAGTAGAGCTTGATGTGTCAGATGAAGAGATGGCTAGAAG
ATATGAGACCTTGGTGGGACAATTGGGAAAAAGTTTCCAGAAAAGAGAGACCATGCCAATTATGAAGAA
GATGAAAATGGAGACATAACACCAATTAAGCAAAGAAGATGTTCTTAAAGCCCCAGGAT

ACGCGTACGCGGCCGCTCGAGCAGAACTCATCTCAGAAGAGGATCTGGCAGCAAATGATATCCTGGATT
ACAAGGATGACGACGATAAGGTTTAA

Protein Sequence: >RC203108 protein sequence
Red=Cloning site Green=Tags(s)

MAAERKTKLSKNLLRMKFMQRGLDSEKQLEEEKIIIEEHWYLDLPELKEKESFIIIEQSFLLEDL
LYGRMSFRGFNPEVEKLMQMNKHKAEVEDETVELDVSDEEMARRYETLVGTIGKKFARKRDHANYEE
DENGDIPIKAKMFLKPQD

TRTRPLEQKLISEEDLAANDILDYKDDDDKV

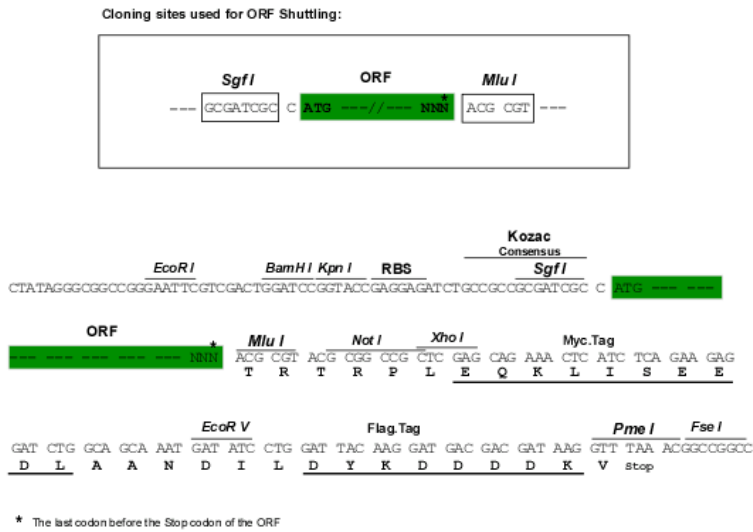
Chromatograms: https://cdn.origene.com/chromatograms/mk6434_f05.zip



[View online >](#)

Restriction Sites: SgfI-MluI

Cloning Scheme:



ACCN: NM_005792

ORF Size: 480 bp

OTI Disclaimer: The molecular sequence of this clone aligns with the gene accession number as a point of reference only. However, individual transcript sequences of the same gene can differ through naturally occurring variations (e.g. polymorphisms), each with its own valid existence. This clone is substantially in agreement with the reference, but a complete review of all prevailing variants is recommended prior to use. [More info](#)

OTI Annotation: This clone was engineered to express the complete ORF with an expression tag. Expression varies depending on the nature of the gene.

Components: The ORF clone is ion-exchange column purified and shipped in a 2D barcoded Matrix tube containing 10ug of transfection-ready, dried plasmid DNA (reconstitute with 100 ul of water).

Reconstitution Method:

1. Centrifuge at 5,000xg for 5min.
2. Carefully open the tube and add 100ul of sterile water to dissolve the DNA.
3. Close the tube and incubate for 10 minutes at room temperature.
4. Briefly vortex the tube and then do a quick spin (less than 5000xg) to concentrate the liquid at the bottom.
5. Store the suspended plasmid at -20°C. The DNA is stable for at least one year from date of shipping when stored at -20°C.

RefSeq: [NM_005792.2](#)

RefSeq Size: 1101 bp

RefSeq ORF: 483 bp

Locus ID: 10200

UniProt ID: [Q99547](#)

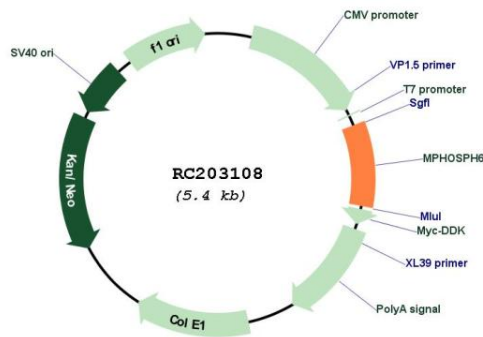
Cytogenetics: 16q23.3

Protein Pathways: RNA degradation

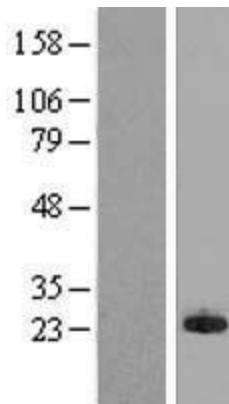
MW: 19 kDa

Gene Summary: RNA-binding protein that associates with the RNA exosome complex. Involved in the 3'-processing of the 7S pre-rRNA to the mature 5.8S rRNA and play a role in recruiting the RNA exosome complex to pre-rRNA; this function may include C1D.[UniProtKB/Swiss-Prot Function]

Product images:



Circular map for RC203108



Western blot validation of overexpression lysate (Cat# [LY417078]) using anti-DDK antibody (Cat# [TA50011-100]). Left: Cell lysates from untransfected HEK293T cells; Right: Cell lysates from HEK293T cells transfected with RC203108 using transfection reagent MegaTran 2.0 (Cat# [TT210002]).