

Product datasheet for **RC203102**

BCA1 (CXCL13) (NM_006419) Human Tagged ORF Clone

Product data:

Product Type: Expression Plasmids
Product Name: BCA1 (CXCL13) (NM_006419) Human Tagged ORF Clone
Tag: Myc-DDK
Symbol: BCA1
Synonyms: ANGIE; ANGIE2; BCA-1; BCA1; BLC; BLR1L; SCYB13
Mammalian Cell Selection: Neomycin
Vector: pCMV6-Entry (PS100001)
E. coli Selection: Kanamycin (25 ug/mL)
ORF Nucleotide Sequence: >RC203102 ORF sequence
Red=Cloning site Blue=ORF Green=Tags(s)

TTTTGTAATACGACTCACTATAGGGCGCCGGGAATTCGTCGACTGGATCCGGTACCGAGGAGATCTGCC
GCC**CGATCGCC**

ATGAAGTTCATCTCGACATCTCTGCTTCTCATGCTGCTGGTCAGCAGCCTCTCTCCAGTCCAAGGTGTTCT
TGGAGGCTATTACACAAGCTTGAGGTGTAGATGTGTCCAAGAGAGCTCAGTCTTTATCCCTAGACGCTT
CATTGATCGAATTCAAATCTTGCCCGTGGGAATGGTTGTCCAAGAAAAGAAATCATAGTCTGGAAGAAG
AACAAAGTCAATTGTGTGTGGACCCTCAAGCTGAATGGATACAAAGAATGATGGAAGTATTGAGAAAAA
GAAGTTCTCAACTCTACCAGTCCAGTGTTAAGAGAAAGATTCCC

ACGCGTACGCGGCCGCTCGAGCAGAAACTCATCTCAGAAGAGGATCTGGCAGCAAATGATATCCTGGATT
ACAAGGATGACGACGATAAGGTTTAA

Protein Sequence: >RC203102 protein sequence
Red=Cloning site Green=Tags(s)
MKFISTSLLLMLLVSSLSPVQGVLEVYYTSLRRCVQESSVFIPRRFIDRIQILPRGNGCPRKEIIVWKK
NKSIVCVDPQAEWIQRMMEVLRKRSSSTLPVPVFKRKIP

TRTRPLEQKLISEEDLAANDILDYKDDDDKV

Chromatograms: https://cdn.origene.com/chromatograms/mk6212_f08.zip

Restriction Sites: SgfI-MluI



[View online »](#)

Cloning Scheme:


ACCN: NM_006419

ORF Size: 327 bp

OTI Disclaimer: The molecular sequence of this clone aligns with the gene accession number as a point of reference only. However, individual transcript sequences of the same gene can differ through naturally occurring variations (e.g. polymorphisms), each with its own valid existence. This clone is substantially in agreement with the reference, but a complete review of all prevailing variants is recommended prior to use. [More info](#)

OTI Annotation: This clone was engineered to express the complete ORF with an expression tag. Expression varies depending on the nature of the gene.

Components: The ORF clone is ion-exchange column purified and shipped in a 2D barcoded Matrix tube containing 10ug of transfection-ready, dried plasmid DNA (reconstitute with 100 ul of water).

- Reconstitution Method:**
1. Centrifuge at 5,000xg for 5min.
 2. Carefully open the tube and add 100ul of sterile water to dissolve the DNA.
 3. Close the tube and incubate for 10 minutes at room temperature.
 4. Briefly vortex the tube and then do a quick spin (less than 5000xg) to concentrate the liquid at the bottom.
 5. Store the suspended plasmid at -20°C. The DNA is stable for at least one year from date of shipping when stored at -20°C.

RefSeq: [NM_006419.2](#), [NP_006410.1](#)

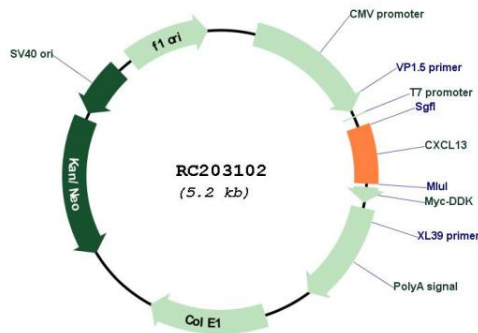
RefSeq Size: 1219 bp

RefSeq ORF: 330 bp

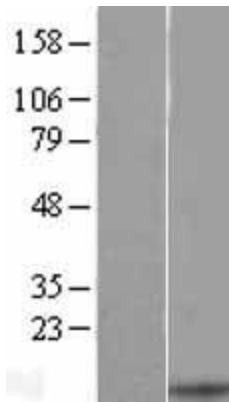
Locus ID: 10563

UniProt ID:	O43927
Cytogenetics:	4q21.1
Domains:	IL8
Protein Families:	Druggable Genome, Secreted Protein
Protein Pathways:	Chemokine signaling pathway, Cytokine-cytokine receptor interaction
MW:	12.7 kDa
Gene Summary:	B lymphocyte chemoattractant, independently cloned and named Angie, is an antimicrobial peptide and CXC chemokine strongly expressed in the follicles of the spleen, lymph nodes, and Peyer's patches. It preferentially promotes the migration of B lymphocytes (compared to T cells and macrophages), apparently by stimulating calcium influx into, and chemotaxis of, cells expressing Burkitt's lymphoma receptor 1 (BLR-1). It may therefore function in the homing of B lymphocytes to follicles. [provided by RefSeq, Oct 2014]

Product images:



Circular map for RC203102



Western blot validation of overexpression lysate (Cat# [LY416657]) using anti-DDK antibody (Cat# [TA50011-100]). Left: Cell lysates from untransfected HEK293T cells; Right: Cell lysates from HEK293T cells transfected with RC203102 using transfection reagent MegaTran 2.0 (Cat# [TT210002]).