

Product datasheet for **RC203093**

ALX1 (NM_006982) Human Tagged ORF Clone

Product data:

Product Type:	Expression Plasmids
Product Name:	ALX1 (NM_006982) Human Tagged ORF Clone
Tag:	Myc-DDK
Symbol:	ALX1
Synonyms:	CART1; FND3; HEL23
Mammalian Cell Selection:	Neomycin
Vector:	pCMV6-Entry (PS100001)
E. coli Selection:	Kanamycin (25 ug/mL)
ORF Nucleotide Sequence:	>RC203093 ORF sequence Red=Cloning site Blue=ORF Green=Tags(s)

TTTTGTAATACGACTCACTATAGGGCGGCCGGAATTCGTCGACTGGATCCGGTACCGAGGAGATCTGCC
GCC**CGATCGCC**

ATGGAGTTTCTGAGCGAGAAGTTTGCCCTCAAGAGCCCTCCGAGTAAAAACAGTGACTTTTACATGGGCG
CAGGAGGTCTCTGGAGCACGTTATGGAGACGCTGGACAATGAGTCCTTTACAGCAAAGCGTCTGCAGG
CAAATGCGTGCAGGCCTTCGGACCCCTGCCCGCGCCGAGCATCACGTGCGCTTGGAGAGGACCTCGCCC
TGTCAGGACAGCAGCGTGAAGTATGGGATCACTAAAGTAGAAGGACAGCCCTTCACACCGAACTGAATA
GAGCTATGGACAAGTAAACAGTCTCCGAATGTCTCCCGTGAAAGGGATGCAAGAGAAGGGAGAGCTGGA
TGAAGTTGGGGATAAATGTGATAGCAATGTATCCAGCAGTAAGAAACGGAGGCACCGAACCACTTCACC
AGTTTGCAGCTAGAGGAGCTGGAGAAAGTCTTTAGAAAACCTATTACCCGGATGTGTATGTCAGAGAAC
AGCTTGCTCTGAGGACAGAGCTCACTGAGGCCAGGGTCCAGGTTTGGTTTCAAAATCGAAGGGCCAAATG
GAGAAAAGGGAACGTTATGGCCAAATACAACAAGCGAAAAGCCATTTTGTGCCACCTATGATATATCA
GTTTTGCCAAGGACTGACAGCTACCCACAGATTCAGAACAAATTTGTGGGCAGGAAATGCAAGTGGTGGTT
CTGTGGTTACTTCATGCATGTTACCACGTGACACTTCTCCTGTATGACACCTTATTCTCACTCGCCTCG
GACAGATTCAGTTACACGGGGTTTTCAAACCACGAGAACCAAGTTCAGCCACGTGCCCTCAACAATTTT
TTCAGTACTCTCTTCTACTGGGGCAACCAATGGACATGCATTTGAAACAAAGCCAGAGTTTGAAGGA
GGTCTTCCAGTATCGCAGTCTTTCGAATGAAAGCCAAGGAGCACACCGCCAATATTTTCATGGGCCATG

ACGCGTACGCGGCCGCTCGAGCAGAAACTCATCTCAGAAGAGGATCTGGCAGCAATGATATCCTGGATT
ACAAGGATGACGACGATAAGGTTTAA



[View online »](#)

Protein Sequence: >RC203093 protein sequence
Red=Cloning site Green=Tags(s)

MEFLSEKFALKSPPSKNSDFYMGAGGPLEHVMETLDNESFYKASAGKCVQAFGPLPRAEHHVRLERTSP
 CQDSSVNYGITKVEGQPLHTELNRAMDNCNSLRMSPVKGMQEKGELDELGDKCDSNVSSSKRRHRTTFT
 SLQLEELEKVFQKTHYPDVVYREQLALRTELTEARVQVWFQNRRAKWRKRERYGQIQQAKSHFAATYDIS
 VLPRTDSYPQIQNNLWAGNASGGSVVTSCMLPRDTSSCMTPTYSHSPRTDSSYTGFSNHQNFQFQSHVPLNMF
 FTDSLTLTGATNGHAFETKPEFERRSSSIIVLRMKAKEHTANISWAM

TRTRPLEQKLISEEDLAANDILDYKDDDDKV

Chromatograms: https://cdn.origene.com/chromatograms/mk6434_f10.zip

Restriction Sites: SgfI-MluI

Cloning Scheme:



ACCN: NM_006982

ORF Size: 978 bp

OTI Disclaimer: The molecular sequence of this clone aligns with the gene accession number as a point of reference only. However, individual transcript sequences of the same gene can differ through naturally occurring variations (e.g. polymorphisms), each with its own valid existence. This clone is substantially in agreement with the reference, but a complete review of all prevailing variants is recommended prior to use. [More info](#)

OTI Annotation: This clone was engineered to express the complete ORF with an expression tag. Expression varies depending on the nature of the gene.

Components: The ORF clone is ion-exchange column purified and shipped in a 2D barcoded Matrix tube containing 10ug of transfection-ready, dried plasmid DNA (reconstitute with 100 ul of water).

Reconstitution Method:

1. Centrifuge at 5,000xg for 5min.
2. Carefully open the tube and add 100ul of sterile water to dissolve the DNA.
3. Close the tube and incubate for 10 minutes at room temperature.
4. Briefly vortex the tube and then do a quick spin (less than 5000xg) to concentrate the liquid at the bottom.
5. Store the suspended plasmid at -20°C. The DNA is stable for at least one year from date of shipping when stored at -20°C.

RefSeq: [NM_006982.3](#)

RefSeq Size: 1320 bp

RefSeq ORF: 981 bp

Locus ID: 8092

UniProt ID: [Q15699](#)

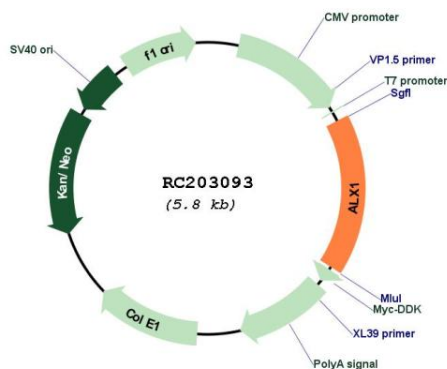
Cytogenetics: 12q21.31

Protein Families: Transcription Factors

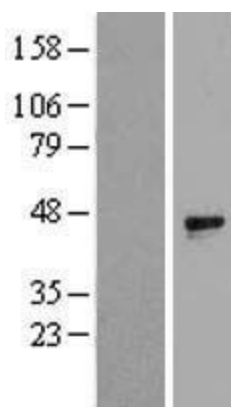
MW: 37 kDa

Gene Summary: The specific function of this gene has yet to be determined in humans; however, in rodents, it is necessary for survival of the forebrain mesenchyme and may also be involved in development of the cervix. Mutations in the mouse gene lead to neural tube defects such as acrania and meroanencephaly. [provided by RefSeq, Jul 2008]

Product images:



Circular map for RC203093



Western blot validation of overexpression lysate (Cat# [LY416281]) using anti-DDK antibody (Cat# [TA50011-100]). Left: Cell lysates from untransfected HEK293T cells; Right: Cell lysates from HEK293T cells transfected with RC203093 using transfection reagent MegaTran 2.0 (Cat# [TT210002]).