

Product datasheet for **RC203083**

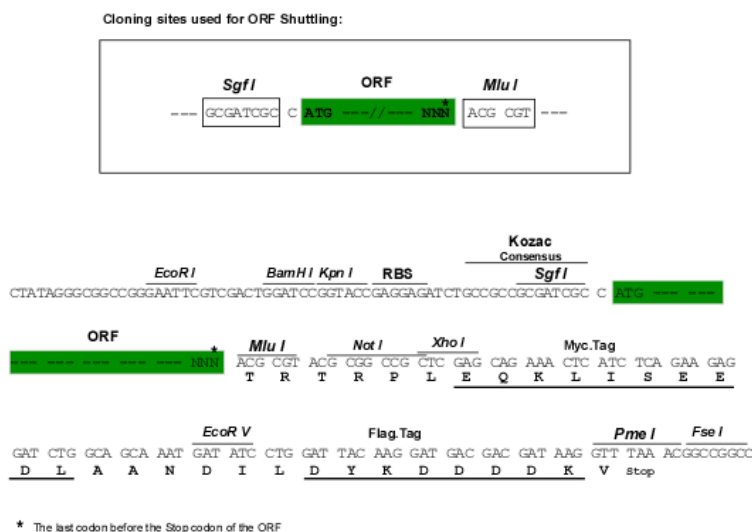
FXC1 (TIMM10B) (NM_012192) Human Tagged ORF Clone

Product data:

Product Type:	Expression Plasmids
Product Name:	FXC1 (TIMM10B) (NM_012192) Human Tagged ORF Clone
Tag:	Myc-DDK
Symbol:	FXC1
Synonyms:	FXC1; Tim9b; TIM10B
Mammalian Cell Selection:	Neomycin
Vector:	pCMV6-Entry (PS100001)
E. coli Selection:	Kanamycin (25 ug/mL)
ORF Nucleotide Sequence:	<p>>RC203083 ORF sequence</p> <p>Red=Cloning site Blue=ORF Green=Tags(s)</p> <p>TTTTGTAATACGACTCACTATAGGGCGGCCGGAATTCGTCGACTGGATCCGGTACCGAGGAGATCTGCCGCCCGATCGCC</p> <p>ATGGAGCGGCAGCAGCAGCAGCAACAGCAACTGCGAAACCTGCGTGACTTCCTGTTGGTCTACAATCGGATGACAGAACTCTGCTTCCAGCGCTGTGTGCCAGCTTGCAACCCGAGCTCTGGACGCTGAGGAGGAGGCTGTCTGCACAGCTGTGCTGGGAAGCTGATCCATTCCAACCCCGCCTCATGGCCGCTTACGTGCAGCTCATGCCTGCCCTGGTACAGCGCCGCATCGCAGACTACGAGGCTGCCTCGGCTGTGCCAAGCGTTGCTGCTGAACAGCCTGGGTCTCTCCATCAGGCAGC</p> <p>ACGCGTACGCGGCCGCTCGAGCAGAACTCATCTCAGAAGAGGATCTGGCAGCAAATGATATCCTGGATTACAAGGATGACGACGATAAGGTTTAA</p>
Protein Sequence:	<p>>RC203083 protein sequence</p> <p>Red=Cloning site Green=Tags(s)</p> <p>MERQQQQQQQLRNLRDFLLVYNRMTELCFQRCVPSLHHRALDAEEEEACLHSCAGKLIHSNHRMLMAAYVQLMPALVQRRRIADYEASAVPSVAAEQPGVSPSGS</p> <p>TRTRPLEQKLISEEDLAANDILDYKDDDDKV</p>
Chromatograms:	https://cdn.origene.com/chromatograms/mk6435_c10.zip
Restriction Sites:	SgfI-MluI


[View online »](#)

Cloning Scheme:



ACCN: NM_012192

ORF Size: 309 bp

OTI Disclaimer: The molecular sequence of this clone aligns with the gene accession number as a point of reference only. However, individual transcript sequences of the same gene can differ through naturally occurring variations (e.g. polymorphisms), each with its own valid existence. This clone is substantially in agreement with the reference, but a complete review of all prevailing variants is recommended prior to use. [More info](#)

OTI Annotation: This clone was engineered to express the complete ORF with an expression tag. Expression varies depending on the nature of the gene.

Components: The ORF clone is ion-exchange column purified and shipped in a 2D barcoded Matrix tube containing 10ug of transfection-ready, dried plasmid DNA (reconstitute with 100 ul of water).

Reconstitution Method:

1. Centrifuge at 5,000xg for 5min.
2. Carefully open the tube and add 100ul of sterile water to dissolve the DNA.
3. Close the tube and incubate for 10 minutes at room temperature.
4. Briefly vortex the tube and then do a quick spin (less than 5000xg) to concentrate the liquid at the bottom.
5. Store the suspended plasmid at -20°C. The DNA is stable for at least one year from date of shipping when stored at -20°C.

Note: Plasmids are not sterile. For experiments where strict sterility is required, filtration with 0.22um filter is required.

RefSeq: [NM_012192.4](#)

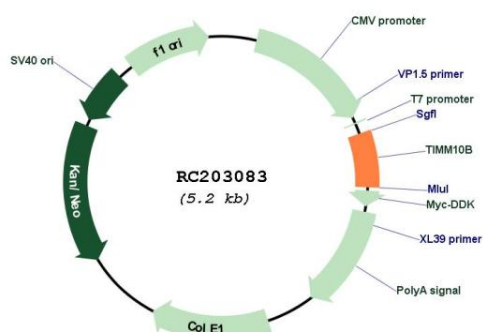
RefSeq Size: 2861 bp

RefSeq ORF: 312 bp

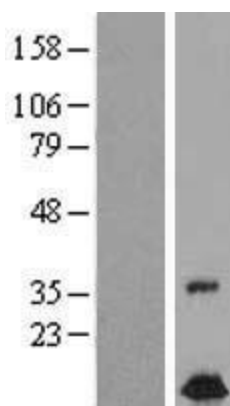
Locus ID: 26515
UniProt ID: [Q9Y5J6](#)
Cytogenetics: 11p15.4
Domains: zf-Tim10_DDP
MW: 11.6 kDa

Gene Summary: FXC1, or TIMM10B, belongs to a family of evolutionarily conserved proteins that are organized in heterooligomeric complexes in the mitochondrial intermembrane space. These proteins mediate the import and insertion of hydrophobic membrane proteins into the mitochondrial inner membrane.[supplied by OMIM, Apr 2004]

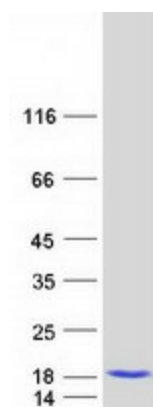
Product images:



Circular map for RC203083



Western blot validation of overexpression lysate (Cat# [LY415921]) using anti-DDK antibody (Cat# [TA50011-100]). Left: Cell lysates from untransfected HEK293T cells; Right: Cell lysates from HEK293T cells transfected with RC203083 using transfection reagent MegaTran 2.0 (Cat# [TT210002]).



Coomassie blue staining of purified TIMM10B protein (Cat# [TP303083]). The protein was produced from HEK293T cells transfected with TIMM10B cDNA clone (Cat# RC203083) using MegaTran 2.0 (Cat# [TT210002]).