

Product datasheet for **RC203081**

fast skeletal Myosin (MYLPF) (NM_013292) Human Tagged ORF Clone

Product data:

Product Type: Expression Plasmids
Product Name: fast skeletal Myosin (MYLPF) (NM_013292) Human Tagged ORF Clone
Tag: Myc-DDK
Symbol: fast skeletal Myosin
Synonyms: HUMMLC2B; MLC2B; MRLC2; MYL11
Mammalian Cell Selection: Neomycin
Vector: pCMV6-Entry (PS100001)
E. coli Selection: Kanamycin (25 ug/mL)
ORF Nucleotide Sequence: >RC203081 ORF sequence
 Red=Cloning site Blue=ORF Green=Tags(s)

TTTTGTAATACGACTCACTATAGGGCGGCCGGAATTCGTCGACTGGATCCGGTACCGAGGAGATCTGCC
 GCC**CGGATCGCC**

ATGGCACCAAGAGGGCCAAGAGAAGGACAGTAGAGGGCGGAAGCTCCAGCGTCTTCTCCATGTTTCGACC
 AGACTCAGATCCAGGAGTTCAAAGAGGCCCTTCACTGTGATCGACCAGAACCCTGATGGTATTATAGACAA
 GGAGGACCTTCGGGACACCTTCGCAGCCATGGGCCGCCTCAATGTGAAGAATGAGGAGTTGGATGCCATG
 ATGAAGGAAGCCAGCGGTCCCATCAACTCACCGTCTTCTGACCATGTTCCGGGAGAAGCTCAAGGGTG
 CCGACCCTGAGGATGTGATCACCGGAGCCTTCAAGGTCTTGGACCCTGAGGAAAGGGCACCATCAAGAA
 GAAGTTCTTGGAGGAGCTGCTGACCACGAGTGTGACCGTCTTCCCAGGAGGAGATCAAGAACATGTGG
 GCGGCCTTCCCCCGACGTGGGCGCAACGTCGACTACAAAACATCTGCTACGTCATCACGCACGGCG
 ACGCCAAGGACCAGGAG

ACGCGTACGCGGCCGCTCGAGCAGAACTCATCTCAGAAGAGGATCTGGCAGCAAATGATATCCTGGATT
 ACAAGGATGACGACGATAAGGTTTAA

Protein Sequence: >RC203081 protein sequence
 Red=Cloning site Green=Tags(s)

MAPKRAKRRTVEGGSSSVFSMFQDTQIQEFKEAFTVIDQNRDGIIDKEDLRDTFAAMGRLNVKNEELDAM
 MKEASGPINFTVFLTMFGEKLGADPEDVITGAFKVLDPPEGKTIKKKFLLELLTTQCDRFSQEEIKNMW
 AAFPPDVGGNVDYKNICYVITHGDAKDQE

TRTRPLEQKLISEEDLAANDILDYKDDDDKV

Chromatograms: https://cdn.origene.com/chromatograms/mk6054_g12.zip



[View online »](#)

Restriction Sites: SgfI-MluI

Cloning Scheme:



ACCN: NM_013292

ORF Size: 507 bp

OTI Disclaimer: The molecular sequence of this clone aligns with the gene accession number as a point of reference only. However, individual transcript sequences of the same gene can differ through naturally occurring variations (e.g. polymorphisms), each with its own valid existence. This clone is substantially in agreement with the reference, but a complete review of all prevailing variants is recommended prior to use. [More info](#)

OTI Annotation: This clone was engineered to express the complete ORF with an expression tag. Expression varies depending on the nature of the gene.

Components: The ORF clone is ion-exchange column purified and shipped in a 2D barcoded Matrix tube containing 10ug of transfection-ready, dried plasmid DNA (reconstitute with 100 ul of water).

Reconstitution Method:

1. Centrifuge at 5,000xg for 5min.
2. Carefully open the tube and add 100ul of sterile water to dissolve the DNA.
3. Close the tube and incubate for 10 minutes at room temperature.
4. Briefly vortex the tube and then do a quick spin (less than 5000xg) to concentrate the liquid at the bottom.
5. Store the suspended plasmid at -20°C. The DNA is stable for at least one year from date of shipping when stored at -20°C.

RefSeq: [NM_013292.5](#)

RefSeq Size: 683 bp

RefSeq ORF: 510 bp

Locus ID: 29895

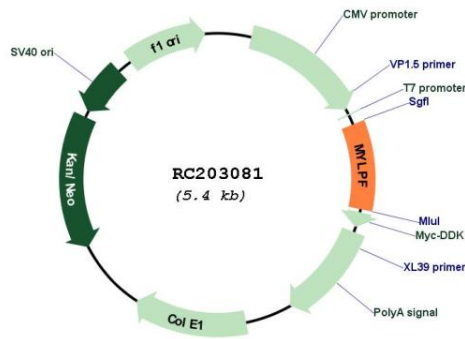
UniProt ID: [Q96A32](#)

Cytogenetics: 16p11.2

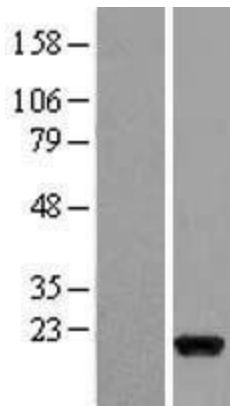
Protein Pathways: Focal adhesion, Leukocyte transendothelial migration, Regulation of actin cytoskeleton, Tight junction

MW: 19 kDa

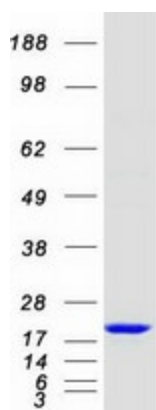
Product images:



Circular map for RC203081



Western blot validation of overexpression lysate (Cat# [LY402240]) using anti-DDK antibody (Cat# [TA50011-100]). Left: Cell lysates from untransfected HEK293T cells; Right: Cell lysates from HEK293T cells transfected with RC203081 using transfection reagent MegaTran 2.0 (Cat# [TT210002]).



Coomassie blue staining of purified MYLPF protein (Cat# [TP303081]). The protein was produced from HEK293T cells transfected with MYLPF cDNA clone (Cat# RC203081) using MegaTran 2.0 (Cat# [TT210002]).