

Product datasheet for **RC203080**

Secretogranin 3 (SCG3) (NM_013243) Human Tagged ORF Clone

Product data:

Product Type:	Expression Plasmids
Product Name:	Secretogranin 3 (SCG3) (NM_013243) Human Tagged ORF Clone
Tag:	Myc-DDK
Symbol:	Secretogranin 3
Synonyms:	SGIII
Mammalian Cell Selection:	Neomycin
Vector:	pCMV6-Entry (PS100001)
E. coli Selection:	Kanamycin (25 ug/mL)



[View online »](#)

ORF Nucleotide Sequence:

>RC203080 ORF sequence
 Red=Cloning site Blue=ORF Green=Tags(s)

TTTTGTAATACGACTCACTATAGGGCGGCCGGGAATTCGTGACTGGATCCGGTACCGAGGAGATCTGCC
 GCC**CGCATCGCC**

ATGGGGTTCTCGGGACCGCCTTGGATTCTGGTGTAGTGCTCCCGATTCAAGCTTCCCAAACCTG
 GAGGAAGCCAAGACAAATCTCTACATAATAGAGAATTAAGTGCAGAAAGACCTTTGAATGAACAGATTGC
 TGAAGCAGAAGAAGACAAGATTAACAAAAACATATCCTCCAGAAAAACAAGCCAGGTCAGAGCAACTATTCT
 TTTGTTGATAACTGAACCTGCTAAAGGCAATAACAGAAAAGGAAAAAATTGAGAAAAGAAAGACAATCTA
 TAAGAAGCTCCCACTTGATAATAAGTTGAATGTGGAAGATGTTGATTCAACCAAGAATCGAAAAGTATG
 CGATGATTATGACTCTACTAAGAGTGGATTGGATCATAAATTTCAAGATGATCCAGATGGTCTTCATCAA
 CTAGACGGGACTCCTTTAACCGCTGAAGACATTGCCATAAAATCGTGCAGGATTTATGAAGAAAATG
 ACAGAGCCCGCTTGGACAAGATTGTTTCTAACTACTTAATCTCGGCCTTATCACAGAAAGCCAAGCACA
 TACTGGAAGATGAAGTAGCAGAGTTTTACAAAAATTAATCTCAAAGGAAGCCAACAATTATGAGGAG
 GATCCCAATAAGCCACAAGCTGGACTGAGAATCAGGCTGGAAAAATACCAGAGAAAAGTACTCCAATGG
 CAGCAATTCAGATGGTCTTGCTAAGGGAGAAAACGATGAAACAGTATCTAACACATTAACCTTGACAAA
 TGGCTTGAAAGGAGAATAAACCTACAGTGAAGACAATTTGAGGAACTCCAATATTTCCCAAATTTCT
 TATGCGCTACTGAAAAGTATTGATTGAGAAAAGAAGCAAAAGAGAAAAGAAACACTGATTACTATCATGA
 AAACACTGATTGACTTTGTGAAGATGATGGTGAATATGGAACAATATCTCCAGAAGAAGGTGTTTCTTA
 CCTTGAAGAACTGGATGAAATGATTGCTTTCAGACAAAAACAAGCTAGAAAAAATGCTACTGACAAT
 ATAAGCAAGCTTTTCCAGCACCATCAGAGAAGAGTATGAAGAAACAGACAGTACCAAGGAAGAAGCAG
 CTAAGATGGAAGGAATATGGAAGCTTGAAGGATTCACAAAAAGATGATAACTCCAACCCAGGAGGAAA
 GACAGATGAACCCAAAGGAAAAACAGAAGCCTATTTGGAAGCCATCAGAAAAAATATTGAATGGTTGAAG
 AAACATGACAAAAAGGAAATAAAGAAGATTATGACCTTTCAAAGATGAGAGACTTCATCAATAACAAG
 CTGATGCTTATGTGGAGAAAGGCATCCTTGACAAGGAAGAAGCCGAGGCCATCAAGCGCATTTATAGCAG
 CCTG

ACGCGTACGCGGCCGCTCGAGCAGAACTCATCTCAGAAGAGGATCTGGCAGCAATGATATCCTGGATT
 ACAAGGATGACGACGATAAGGTTTAA

Protein Sequence:

>RC203080 protein sequence
 Red=Cloning site Green=Tags(s)

MGFLGTGTWILVVLPIQAFPKPGGSQDKSLHNRELSAERPLNEQIAEAEEDKIKKTYPPENKPGQSNYS
 FVDNLNLLKAITEKEKIEKERQSISSPLDNKLNVEDVDSTKNRKLIDDYDSTKSLDHFQDDPDGLHQ
 LDGTPLTAEIVHKIAARIYEENDRAAFDKIVSKLLNLGLITESQAHTLEDEVAEVLQKLISKEANNYEE
 DPNKPTSWTENQAGKIQEKVTPMAAIQDGLAKGENDETVSNTLTLNGLERRTKTYSEDNFEELQYFPNF
 YALLKSIDSEKEAKEKETLITIMKTLIDFVKMMVKYGTISPEEGVSYLENLDEMIALQTKNKLEKNATDN
 ISKLFPAPEKSHEETDSTKEEAAKMEKEYGSLKDSTKDDNSNPGGKTDEPKGKTEAYLEAIRKNIEWLK
 KHKDKGNKEDYDLSKMRDFINKQADAYVEKGILDKEEAEAIKRIYSSL

TRTRPLEQKLISEEDLAANDILDYKDDDDKV

Chromatograms:

https://cdn.origene.com/chromatograms/mk6055_d01.zip

Restriction Sites:

Sgfl-MluI

Cloning Scheme:

Cloning sites used for ORF Shutting:



* The last codon before the Stop codon of the ORF

ACCN: NM_013243

ORF Size: 1404 bp

OTI Disclaimer: The molecular sequence of this clone aligns with the gene accession number as a point of reference only. However, individual transcript sequences of the same gene can differ through naturally occurring variations (e.g. polymorphisms), each with its own valid existence. This clone is substantially in agreement with the reference, but a complete review of all prevailing variants is recommended prior to use. [More info](#)

OTI Annotation: This clone was engineered to express the complete ORF with an expression tag. Expression varies depending on the nature of the gene.

Components: The ORF clone is ion-exchange column purified and shipped in a 2D barcoded Matrix tube containing 10ug of transfection-ready, dried plasmid DNA (reconstitute with 100 ul of water).

Reconstitution Method:

1. Centrifuge at 5,000xg for 5min.
2. Carefully open the tube and add 100ul of sterile water to dissolve the DNA.
3. Close the tube and incubate for 10 minutes at room temperature.
4. Briefly vortex the tube and then do a quick spin (less than 5000xg) to concentrate the liquid at the bottom.
5. Store the suspended plasmid at -20°C. The DNA is stable for at least one year from date of shipping when stored at -20°C.

RefSeq: [NM_013243.4](#)
RefSeq Size: 3366 bp

RefSeq ORF: 1407 bp

Locus ID: 29106

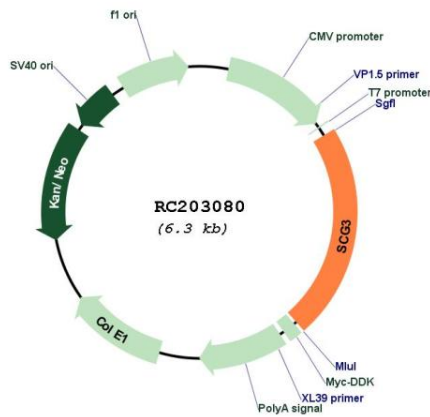
UniProt ID: [Q8WXD2](#)
Cytogenetics: 15q21.2

Protein Families: Druggable Genome, Secreted Protein

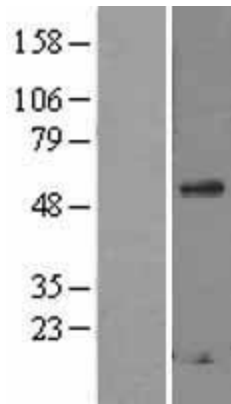
MW: 53 kDa

Gene Summary: The protein encoded by this gene is a member of the chromogranin/secretogranin family of neuroendocrine secretory proteins. Granins may serve as precursors for biologically active peptides. Some granins have been shown to function as helper proteins in sorting and proteolytic processing of prohormones; however, the function of this protein is unknown. Two transcript variants encoding different isoforms have been found for this gene. [provided by RefSeq, Sep 2009]

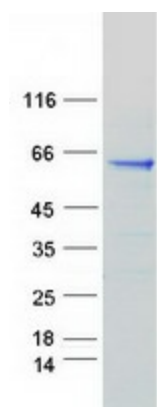
Product images:



Circular map for RC203080



Western blot validation of overexpression lysate (Cat# [LY402232]) using anti-DDK antibody (Cat# [TA50011-100]). Left: Cell lysates from untransfected HEK293T cells; Right: Cell lysates from HEK293T cells transfected with RC203080 using transfection reagent MegaTran 2.0 (Cat# [TT210002]).



Coomassie blue staining of purified SCG3 protein (Cat# [TP303080]). The protein was produced from HEK293T cells transfected with SCG3 cDNA clone (Cat# RC203080) using MegaTran 2.0 (Cat# [TT210002]).