

## Product datasheet for **RC203072**

### Mago nashi homolog 2 (MAGOHB) (NM\_018048) Human Tagged ORF Clone

#### Product data:

**Product Type:** Expression Plasmids  
**Product Name:** Mago nashi homolog 2 (MAGOHB) (NM\_018048) Human Tagged ORF Clone  
**Tag:** Myc-DDK  
**Symbol:** Mago nashi homolog 2  
**Synonyms:** mago; magoh; MGN2  
**Mammalian Cell Selection:** Neomycin  
**Vector:** pCMV6-Entry (PS100001)  
**E. coli Selection:** Kanamycin (25 ug/mL)  
**ORF Nucleotide Sequence:** >RC203072 ORF sequence  
Red=Cloning site Blue=ORF Green=Tags(s)

TTTTGTAATACGACTCACTATAGGGCGGCCGGAATTCGTCGACTGGATCCGGTACCGAGGAGATCTGCC  
GCC**CGCATCGCC**

ATGGCTGTGGCTAGCGATTTCTACCTGCGCTACTCGTAGGGCACAAGGGCAAGTTTGGGCACGAGTTTC  
TGGAGTTCGAATTCGGCCGGACGAAAGCTTAGATATGCCAACACAGCAATTACAAAAATGATGTGAT  
GATCAGAAAAGAGGCTTATGTGCACAAGAGTGAATGGAAGAAGTGAAGAGAATTATTGATGACAGTGAA  
ATTACAAAAGAAGATGATGCTTTGTGGCCTCCCCCTGATAGGGTTGGCCGACAGGAGCTTGAATTTGTA  
TTGGAGATGAGCACATATCTTTTACCACATCAAAAATAGGTTCTCTTATTGATGTAATCAGTCAAAGGA  
TCCTGAAGGCCTTCGAGTATTTTACTATTTGGTACAAGACTTGAATGTTTAGTTTTAGTCTTATTGGA  
TTACACTCAAGATTAACCAATT

**ACGCGT**ACGCGGCCGCTCGAGCAGAACTCATCTCAGAAGAGGATCTGGCAGCAAATGATATCCTGGATT  
ACAAGGATGACGACGATAAGGTTTAA

**Protein Sequence:** >RC203072 protein sequence  
Red=Cloning site Green=Tags(s)  
MAVASDFYLRYVGHKGFGEHFEFEFRPDGKLRVANNVNYKNDVMIRKEAYVHKVSMELKRIIDDSE  
ITKEDDALWPPDRVGRQELEIVIGDEHISFTTSKIGSLIDVNQSKDPEGLRVFYLVQDLKCLVFLIG  
LHFKIKPI

**TRTRPLEQKLISEEDLAANDILDYKDDDDKV**

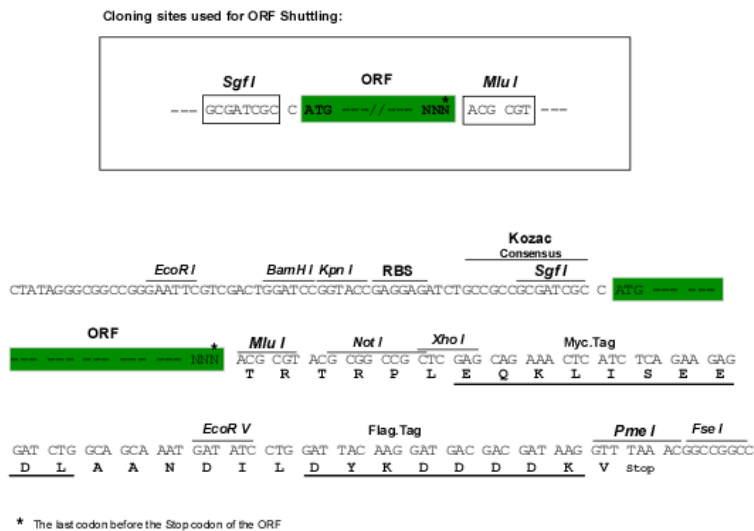
**Chromatograms:** [https://cdn.origene.com/chromatograms/mk6434\\_f11.zip](https://cdn.origene.com/chromatograms/mk6434_f11.zip)



[View online »](#)

Restriction Sites: SgfI-MluI

Cloning Scheme:



ACCN: NM\_018048

ORF Size: 444 bp

OTI Disclaimer: The molecular sequence of this clone aligns with the gene accession number as a point of reference only. However, individual transcript sequences of the same gene can differ through naturally occurring variations (e.g. polymorphisms), each with its own valid existence. This clone is substantially in agreement with the reference, but a complete review of all prevailing variants is recommended prior to use. [More info](#)

OTI Annotation: This clone was engineered to express the complete ORF with an expression tag. Expression varies depending on the nature of the gene.

Components: The ORF clone is ion-exchange column purified and shipped in a 2D barcoded Matrix tube containing 10ug of transfection-ready, dried plasmid DNA (reconstitute with 100 ul of water).

Reconstitution Method:

1. Centrifuge at 5,000xg for 5min.
2. Carefully open the tube and add 100ul of sterile water to dissolve the DNA.
3. Close the tube and incubate for 10 minutes at room temperature.
4. Briefly vortex the tube and then do a quick spin (less than 5000xg) to concentrate the liquid at the bottom.
5. Store the suspended plasmid at -20°C. The DNA is stable for at least one year from date of shipping when stored at -20°C.

RefSeq: [NM\\_018048.2](#), [NP\\_060518.1](#)

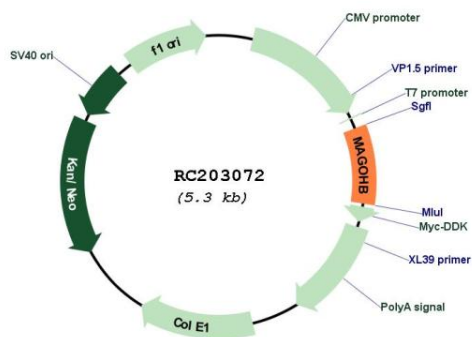
RefSeq Size: 3034 bp

RefSeq ORF: 447 bp

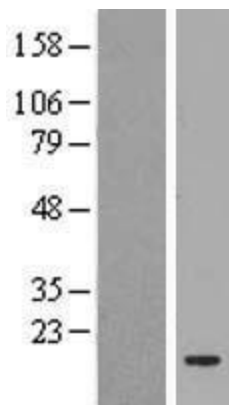
Locus ID: 55110

UniProt ID: [Q96A72](#)  
 Cytogenetics: 12p13.2  
 Domains: Mago\_nashi  
 Protein Pathways: Spliceosome  
 MW: 17.3 kDa  
 Gene Summary: Required for pre-mRNA splicing as component of the spliceosome (PubMed:28502770, PubMed:29301961, PubMed:30705154). Plays a redundant role with MAGOH in the exon junction complex and in the nonsense-mediated decay (NMD) pathway (PubMed:23917022). [UniProtKB/Swiss-Prot Function]

**Product images:**



Circular map for RC203072



Western blot validation of overexpression lysate (Cat# [LY413358]) using anti-DDK antibody (Cat# [TA50011-100]). Left: Cell lysates from untransfected HEK293T cells; Right: Cell lysates from HEK293T cells transfected with RC203072 using transfection reagent MegaTran 2.0 (Cat# [TT210002]).