

Product datasheet for **RC203071**

CEP27 (HAUS2) (NM_018097) Human Tagged ORF Clone

Product data:

Product Type:	Expression Plasmids
Product Name:	CEP27 (HAUS2) (NM_018097) Human Tagged ORF Clone
Tag:	Myc-DDK
Symbol:	CEP27
Synonyms:	C15orf25; CEP27; HsT17025
Mammalian Cell Selection:	Neomycin
Vector:	pCMV6-Entry (PS100001)
E. coli Selection:	Kanamycin (25 ug/mL)
ORF Nucleotide Sequence:	>RC203071 ORF sequence Red=Cloning site Blue=ORF Green=Tags(s)

TTTTGTAATACGACTCACTATAGGGCGGCCGGAATTCGTCGACTGGATCCGGTACCGAGGAGATCTGCC
GCC**CGATCGCC**

ATGGCCGCTGCCAACCCGTGGGACCCGGCGTCCGCGCCTAACGGCGCTGGGCTAGTGTAGGCCACTTCA
TAGCTTCGGGGATGGTCAATCAGGAGATGTTAAACATGTCTAAGAAAACAGTTTCTTGTGTTTGTGAACTT
CACCAGACTACAGCAGATCACAATATTCAAGCTGAAATCTACCAGAAAAACCTGGAAATTGAACTCCTG
AAACTAGAAAAAGATACAGCAGATGTTGTTTCATCCTTTCTTTTGGCTCAGAAGTGCATACTCTGCAA
GCATGAATAATCATTGGAAGCAGTGTGAAAGAGAAGAGATCCCTTAGGCAAAGACTGTTGAAACCCAT
GTGCCAGGAAAACCTTACCTATTGAAGCTGTTTATCACAGATATATGGTACATTTGCTGGAGTTGGCTGTG
ACTTTCATTGAGAGATTAGAAAACCCACCTTGAACAATTAGAAATATTCCCTATTGACTGCAAACTAA
AGAAAATGAACCAGGCTTTAGCAAAGATGGATATATTGGTGACTGAGACAGAAGAACTGGCAGAGAATAT
ACTCAAGTGGCGTAAACAACAAAACGAAGTTTCGTCCTTGTATCCCCAAAATATTAGCTGAAGAAAGTTAT
CTTTATAAACATGATATTATAATGCCTCCTTTACCTTTTACTTCTAAAGTTCATGTCCAACTATTAATG
CCAAG

ACGCGTACGCGGCCGCTCGAGCAGAAACTCATCTCAGAAGAGGATCTGGCAGCAAATGATATCCTGGATT
ACAAGGATGACGACGATAAGGTTTAA



[View online »](#)

Protein Sequence: >RC203071 protein sequence
 Red=Cloning site Green=Tags(s)

MAAANPWPASAPNGAGLVLGHF IASGMVNQEMLNMSKKTVSCFVNFRLLQQITNIQAEIYQKNLEIELL
 KLEKDTADVVPFFLAQKCHTLQSMNNHLEAVLKEKRSRLRQLLKPMCQENLPIEAVYHRYMVHLELAV
 TFIERLETHLETIRNIPHLAANLKKMNQALAKMDILVTETEELAENILKWRKQQNEVSSCIPKILAEESY
 LYKHDIIMPPLPFTSKVHVQTINAK

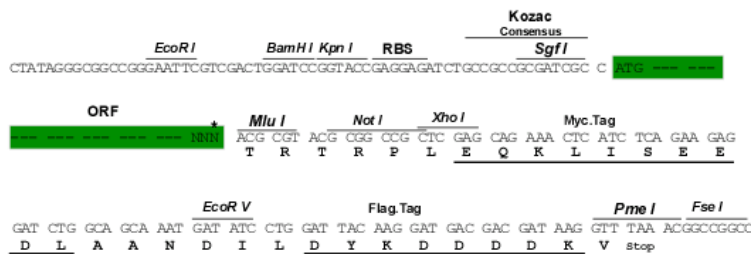
TRTRPLEQKLISEEDLAANDILDYKDDDDKV

Chromatograms: https://cdn.origene.com/chromatograms/mk6434_b11.zip

Restriction Sites: SgfI-MluI

Cloning Scheme:

Cloning sites used for ORF Shuttling:



* The last codon before the Stop codon of the ORF

ACCN: NM_018097

ORF Size: 705 bp

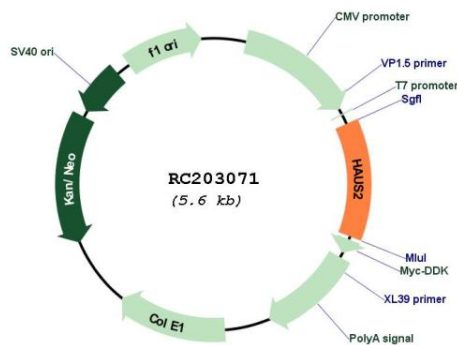
OTI Disclaimer: Due to the inherent nature of this plasmid, standard methods to replicate additional amounts of DNA in E. coli are highly likely to result in mutations and/or rearrangements. Therefore, OriGene does not guarantee the capability to replicate this plasmid DNA. Additional amounts of DNA can be purchased from OriGene with batch-specific, full-sequence verification at a reduced cost. Please contact our customer care team at custsupport@origene.com or by calling 301.340.3188 option 3 for pricing and delivery.

The molecular sequence of this clone aligns with the gene accession number as a point of reference only. However, individual transcript sequences of the same gene can differ through naturally occurring variations (e.g. polymorphisms), each with its own valid existence. This clone is substantially in agreement with the reference, but a complete review of all prevailing variants is recommended prior to use. [More info](#)

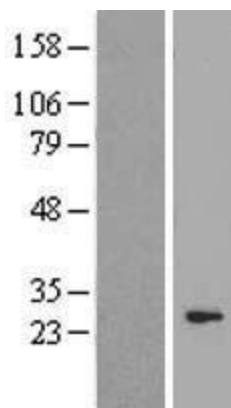
OTI Annotation: This clone was engineered to express the complete ORF with an expression tag. Expression varies depending on the nature of the gene.

Components:	The ORF clone is ion-exchange column purified and shipped in a 2D barcoded Matrix tube containing 10ug of transfection-ready, dried plasmid DNA (reconstitute with 100 ul of water).
Reconstitution Method:	<ol style="list-style-type: none">1. Centrifuge at 5,000xg for 5min.2. Carefully open the tube and add 100ul of sterile water to dissolve the DNA.3. Close the tube and incubate for 10 minutes at room temperature.4. Briefly vortex the tube and then do a quick spin (less than 5000xg) to concentrate the liquid at the bottom.5. Store the suspended plasmid at -20°C. The DNA is stable for at least one year from date of shipping when stored at -20°C.
RefSeq:	<u>NM_018097.3</u>
RefSeq Size:	3953 bp
RefSeq ORF:	708 bp
Locus ID:	55142
UniProt ID:	<u>Q9NVX0</u>
Cytogenetics:	15q15.2
MW:	26.9 kDa
Gene Summary:	The protein encoded by this gene is a subunit of the augmin complex. The augmin complex plays a role in microtubule attachment to the kinetochore and central spindle formation. [provided by RefSeq, Apr 2016]

Product images:



Circular map for RC203071



Western blot validation of overexpression lysate (Cat# [LY413313]) using anti-DDK antibody (Cat# [TA50011-100]). Left: Cell lysates from untransfected HEK293T cells; Right: Cell lysates from HEK293T cells transfected with RC203071 using transfection reagent MegaTran 2.0 (Cat# [TT210002]).