

Product datasheet for **RC203065**

TMEM216 (NM_016499) Human Tagged ORF Clone

Product data:

Product Type: Expression Plasmids
Product Name: TMEM216 (NM_016499) Human Tagged ORF Clone
Tag: Myc-DDK
Symbol: TMEM216
Synonyms: HSPC244
Mammalian Cell Selection: Neomycin
Vector: pCMV6-Entry (PS100001)
E. coli Selection: Kanamycin (25 ug/mL)
ORF Nucleotide Sequence: >RC203065 ORF sequence
Red=Cloning site Blue=ORF Green=Tags(s)

TTTTGTAATACGACTCACTATAGGGCGGCCGGAATTCGTCGACTGGATCCGGTACCGAGGAGATCTGCC
GCC**CGATCGCC**

ATGCTCCTCTTTATCTTGAATTGAAGTAATTCGCCTGTTTTTGGTACAAAGGGAAACCTCTGCCAGC
GAAAGATGCCACTCAGTATTAGCGTGGCCTTGACCTTCCCATCTGCCATGATGGCCTCCTATTACCTGCT
GCTGCAGACCTACGTACTCCGCCTGGAAGCCATCATGAATGGCATCTTGCTCTTCTCTGTGGCTCAGAG
CTTTTACTTGAGGTGCTCACCTGGCTGCTTTCTCCAGTATGGACACGATT

ACGCGTACGCGGCCGCTCGAGCAGAAACTCATCTCAGAAGAGGATCTGGCAGCAAATGATATCCTGGATT
ACAAGGATGACGACGATAAGGTTTAA

Protein Sequence: >RC203065 protein sequence
Red=Cloning site Green=Tags(s)

MLLLYLGIIEVIRLFFGTKGNLCQRKMPLSISVALTFPSAMMASYLLLQTYVLRLEAIMNGILLFFCGSE
LLLEVLTLAAFSSMDTI

TRTRPLEQKLISEEDLAANDILDYKDDDDKV

Chromatograms: https://cdn.origene.com/chromatograms/mk6434_b08.zip

Restriction Sites: Sgfl-MluI



[View online »](#)

Cloning Scheme:


ACCN: NM_016499

ORF Size: 261 bp

OTI Disclaimer: The molecular sequence of this clone aligns with the gene accession number as a point of reference only. However, individual transcript sequences of the same gene can differ through naturally occurring variations (e.g. polymorphisms), each with its own valid existence. This clone is substantially in agreement with the reference, but a complete review of all prevailing variants is recommended prior to use. [More info](#)

OTI Annotation: This clone was engineered to express the complete ORF with an expression tag. Expression varies depending on the nature of the gene.

Components: The ORF clone is ion-exchange column purified and shipped in a 2D barcoded Matrix tube containing 10ug of transfection-ready, dried plasmid DNA (reconstitute with 100 ul of water).

- Reconstitution Method:**
1. Centrifuge at 5,000xg for 5min.
 2. Carefully open the tube and add 100ul of sterile water to dissolve the DNA.
 3. Close the tube and incubate for 10 minutes at room temperature.
 4. Briefly vortex the tube and then do a quick spin (less than 5000xg) to concentrate the liquid at the bottom.
 5. Store the suspended plasmid at -20°C. The DNA is stable for at least one year from date of shipping when stored at -20°C.

RefSeq: [NM_016499.2](#), [NP_057583.1](#)

RefSeq Size: 1287 bp

RefSeq ORF: 264 bp

Locus ID: 51259

UniProt ID: [Q9P0N5](#)

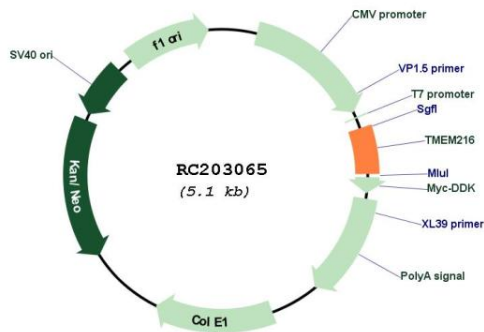
Cytogenetics: 11q12.2

Protein Families: Transmembrane

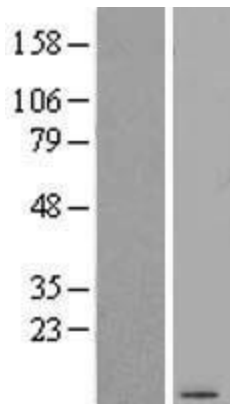
MW: 9.7 kDa

Gene Summary: This locus encodes a transmembrane domain-containing protein. Mutations at this locus have been associated with Meckel-Gruber Syndrome Type 2, and Joubert Syndrome 2, also known as Cerebello-oculorenal Syndrome 2. [provided by RefSeq, Aug 2010]

Product images:



Circular map for RC203065



Western blot validation of overexpression lysate (Cat# [LY413939]) using anti-DDK antibody (Cat# [TA50011-100]). Left: Cell lysates from untransfected HEK293T cells; Right: Cell lysates from HEK293T cells transfected with RC203065 using transfection reagent MegaTran 2.0 (Cat# [TT210002]).