

Product datasheet for RC203064

MAGEE1 (MAGEC2) (NM_016249) Human Tagged ORF Clone

Product data:

Product Type:	Expression Plasmids
Product Name:	MAGEE1 (MAGEC2) (NM_016249) Human Tagged ORF Clone
Tag:	Myc-DDK
Symbol:	MAGEE1
Synonyms:	CT10; HCA587; MAGEE1
Mammalian Cell Selection:	Neomycin
Vector:	pCMV6-Entry (PS100001)
E. coli Selection:	Kanamycin (25 ug/mL)
ORF Nucleotide Sequence:	>RC203064 ORF sequence Red=Cloning site Blue=ORF Green=Tags(s)

TTTTGTAATACGACTCACTATAGGGCGCCGGGAATTCGTCGACTGGATCCGGTACCGAGGAGATCTGCC
GCC**CGATCGCC**

ATGCTCCCGTTCAGGCGTTCCATTCCGCAACGCTGACAACGACTCCCCGACCTCAGTTGAGTTAGAAG
ACTGGGTAGATGCACAGCATCCCACAGATGAGGAAGAGGAGGAAGCCTCCTCCGCCTCTTCCACTTTGTA
CTTAGTATTTTCCCCTCTTCTTCTCCACATCCTTCTCTGATTCTTGGTGGTCTGAGGAGGAGGAG
GTGCCCTCTGGTGTGATACCAAATCTTACCGAGAGCATTCCCAGTAGTCTCCACAGGGTCTCCACAGG
GTCCTTCCAGAGTCTCTGAGCTCCTGCTGCTCCTCTTTTTCATGGAGCTCATTAGTGGAGTCCAG
CAGCCAGAAAGGGGAGGATACAGGCACCTGTCCAGGCCTGCCAGACAGTGAAGTCTTTTACATATACA
CTAGATGAAAAGGTGGCCGAGTTAGTGGAGTTCCTGCTCCTCAAATACGAAGCAGAGGAGCCTGTAACAG
AGGCAGAGATGCTGATGATTGTCAAGTACAAGATTACTTTTCTGTGATACTCAAGAGAGCCCGTGA
GTTTATGGAGTCTTTTTGGCCTTGCCCTGATAGAAGTGGGCCCTGACCACTTCTGTGTGTTTGCAAAC
ACAGTAGGCCTCACCGATGAGGGTAGTATGATGAGGGCATGCCCGAGAACAGCCTCCTGATTATTATTC
TGAGTGTGATCTTCATAAAGGGCAACTGTGCCTCTGAGGAGTCTCTGGGAAGTGTGAATGCAGTAGG
GGTATATGCTGGGAGGAGCACTTCGTCTATGGGAGCCTAGGGAGCTCCTCACTAAAGTTGGGTGCAG
GGACATTACCTGGAGTATCGGGAGGTGCCACAGTTCCTCCATATTGAATTCCTGTGGGTCCAA
GAGCCCATTGAGAAAGCATCAAGAAGAAAGTACTAGAGTTTTAGCCAAGCTGAACAACACTGTTCCCTAG
TTCTTTCCATCCTGGTACAAGGATGCTTTGAAAGATGTGGAAGAGAGAGTCCAGGCCACAAATTGATACC
GCAGATGATGCCACTGTGATGGCCAGTAAAGCCTCAGTGTGATGTCCAGCAACGCTCCTTTTCTGAG

ACGCGTACGCGGCCGCTCGAGCAGAAACTCATCTCAGAAGAGGATCTGGCAGCAATGATATCCTGGATT
ACAAGGATGACGACGATAAGGTTAA



[View online »](#)

Protein Sequence: >RC203064 protein sequence
Red=Cloning site Green=Tags(s)

MPPVPGVPFRNADNDSPTSVELEDWVDAQHTDEEEEEASSASSTLYLVFSPSSFSTSSSLILGGPEEEE
 VPSGVIPNLTESIPSSPPQGPQGPSQSPLSSCCSSFWSWFSESSSQKGEDTGTQGLPDSSESSFTYT
 LDEKVAELVEFLLKYEAEPEVTEAEMLMIVIKYKDYFPVILKRAREFMELLFGLALIEVGPDPHFCVFAN
 TVGLTDEGSDDEGMPENSLIIILSVIFIKGNCASEEVIWEVLNAVGVYAGREHFVYGEPRELLTKVWVQ
 GHYLEYREVPHSSPPYYEFLWGPRAHSESIKKKVLFLAKLNNTVPSSFPSPWYKDALKDVEERVQATIDT
 ADDATVMASELSVMSSNVSFSE

TRTRPLEQKLISEEDLAANDILDYKDDDDKV

Chromatograms: https://cdn.origene.com/chromatograms/mk6247_e07.zip

Restriction Sites: SgfI-MluI

Cloning Scheme:



* The last codon before the Stop codon of the ORF

ACCN: NM_016249

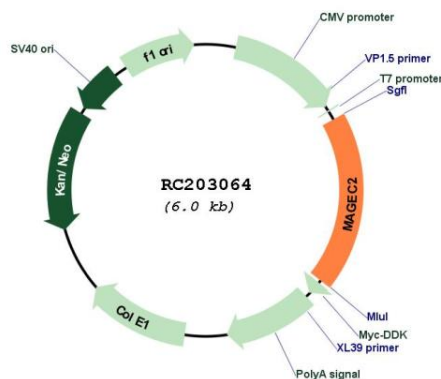
ORF Size: 1119 bp

OTI Disclaimer: Due to the inherent nature of this plasmid, standard methods to replicate additional amounts of DNA in E. coli are highly likely to result in mutations and/or rearrangements. Therefore, OriGene does not guarantee the capability to replicate this plasmid DNA. Additional amounts of DNA can be purchased from OriGene with batch-specific, full-sequence verification at a reduced cost. Please contact our customer care team at custsupport@origene.com or by calling 301.340.3188 option 3 for pricing and delivery.

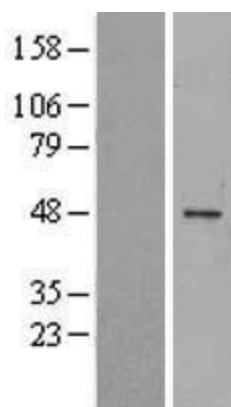
The molecular sequence of this clone aligns with the gene accession number as a point of reference only. However, individual transcript sequences of the same gene can differ through naturally occurring variations (e.g. polymorphisms), each with its own valid existence. This clone is substantially in agreement with the reference, but a complete review of all prevailing variants is recommended prior to use. [More info](#)

- OTI Annotation:** This clone was engineered to express the complete ORF with an expression tag. Expression varies depending on the nature of the gene.
- Components:** The ORF clone is ion-exchange column purified and shipped in a 2D barcoded Matrix tube containing 10ug of transfection-ready, dried plasmid DNA (reconstitute with 100 ul of water).
- Reconstitution Method:**
1. Centrifuge at 5,000xg for 5min.
 2. Carefully open the tube and add 100ul of sterile water to dissolve the DNA.
 3. Close the tube and incubate for 10 minutes at room temperature.
 4. Briefly vortex the tube and then do a quick spin (less than 5000xg) to concentrate the liquid at the bottom.
 5. Store the suspended plasmid at -20°C. The DNA is stable for at least one year from date of shipping when stored at -20°C.
- RefSeq:** [NM_016249.4](#)
- RefSeq Size:** 2008 bp
- RefSeq ORF:** 1122 bp
- Locus ID:** 51438
- UniProt ID:** [Q9UBF1](#)
- Cytogenetics:** Xq27.2
- MW:** 41.1 kDa
- Gene Summary:** This gene is a member of the MAGEC gene family. It is not expressed in normal tissues, except for testis, and is expressed in tumors of various histological types. This gene and the other MAGEC genes are clustered on chromosome Xq26-q27. [provided by RefSeq, Oct 2009]

Product images:



Circular map for RC203064



Western blot validation of overexpression lysate (Cat# [LY414092]) using anti-DDK antibody (Cat# [TA50011-100]). Left: Cell lysates from untransfected HEK293T cells; Right: Cell lysates from HEK293T cells transfected with RC203064 using transfection reagent MegaTran 2.0 (Cat# [TT210002]).