

## Product datasheet for **RC203058**

### **CYP39A1 (NM\_016593) Human Tagged ORF Clone**

#### **Product data:**

Product Type:	Expression Plasmids
Product Name:	CYP39A1 (NM_016593) Human Tagged ORF Clone
Tag:	Myc-DDK
Symbol:	CYP39A1
Mammalian Cell Selection:	Neomycin
Vector:	pCMV6-Entry (PS100001)
E. coli Selection:	Kanamycin (25 ug/mL)



[View online »](#)

**ORF Nucleotide Sequence:**

>RC203058 ORF sequence  
 Red=Cloning site Blue=ORF Green=Tags(s)

TTTTGTAATACGACTCACTATAGGGCGGCCGGGAATTCGTCGACTGGATCCGGTACCGAGGAGATCTGCC  
 GCC**GCGATCGCC**

ATGGAACTAATTTCCCAACAGTGATTATAATCCTGGGTTGCCTTGTCTGTTCTTACTCCTTCAGCCGA  
 AGAATTTGCGTAGACCCCGTGCATCAAGGCTGGATTCTTGGATTGGAGTTGGATTTGAGTTTGGGAA  
 AGCCCTCTAGAATTTATAGAGAAAGCAAGAATCAAGTATGGACCAATATTTACAGTCTTTGCTATGGGA  
 AACCGAATGACCTTTGTTACTGAAGAAGAAGGAATTAATGTGTTTCTAAAATCCAAAAAGTAGATTTTG  
 AACTAGCAGTGCAAAATATCGTTTATCGTACAGCATCAATCCAAAGAATGTCTTTTAGCACTGCATGA  
 AAAACTCTATATTATGTTGAAAGGGAAAATGGGGACTGTCAATCTCCATCAGTTTACTGGCAACTGACT  
 GAAGAATTACATGAACAACTGGAGAATTTAGGCACTCATGGGACAATGGACCTGAACAACCTAGTAAGAC  
 ATCTCTTTATCCAGTCACAGTGAATATGCTCTTTAATAAAAAGTTTGTTCACAAAACAAGAAAAAAT  
 CAAGGAGTCCATCAGTATTTCAAGTTTATGATGAAGATTTTGTGATGGGTCCAGTTGCCAGAGTGT  
 CTCTAAGAAACTGGTCAAAATCCAAAAAGTGGTCTGGAACCTGTTTGAGAAAAACATTCAGATATAA  
 AAGCATGTAATCTGCAAAAGATAATCCATGACATTATTGCAAGCTACGCTGGATATTGTAGAGACGGA  
 AACAAAGTAAGGAAAACCTACCCAATTATGGGCTTCTACTGCTTTGGGCTTCTCTGTCTAATGCTGTTCT  
 GTTGCAATTTTGGACACTGCACACGTCCTTTCTCATCCTGATATCCACAAGGCCATTATGGAAGGCATAT  
 CTTCTGTGTTTGGCAAAGCAGGCAAAGATAAGATTAAGTGTCTGAGGATGACCTGGAGAATCTCCTTCT  
 AATTAATGGTGTGTTTGGAAACCATTCTGTTAAAAGCTCCTGGTGTCTACTAGAAAAGTGGTGAAG  
 CCTGTGGAAATTTGAATTACATCATTCTTCTGGTACTTGTGATGTTGTCTCCATTTGGCTGCATA  
 GAAATCCAAAGTATTTCTGAGCTGAATTGTTCAAACCTGAAGTTGGAAAAAGGCAAATTTAGAGAA  
 GCACTCTTTCTGGACTGCTTCATGGCATTGGAAAGCGGAAGTCCAGTGTCTGCAAGGTGGTTTGTCT  
 CTGTTAGAGGTTGAGATGTATTATTTAATACTTTATAAATATGACTGTAGTCTTCTGGACCCATTAC  
 CCAAACAGAGTTATCTCCATTTGGTGGGTGTCCCCAGCCGGAAGGGCAATGCCGAATTGAATATAAACA  
 AAGAATA

**ACGCGT**ACGCGGCCGCTCGAGCAGAAACTCATCTCAGAAGAGGATCTGGCAGCAAATGATATCCTGGATT  
 ACAAGGATGACGACGATAAGGTTTAA

**Protein Sequence:**

>RC203058 protein sequence  
 Red=Cloning site Green=Tags(s)

MELISPTVIIILGCLALFLLLQPKNLRRPPCIKWIPWIGVGFEGKAPLEFIEKARIKYGPIFTVFAMG  
 NRMTFVTEEEGINVFLSKKVFELAVQNIYVRTASIPKNVFLALHEKLYIMLKGKMGTVNLHQFTGQLT  
 EELHEQLENLGHGTMDLNNLVRHLLYPVTVNMLFNKSLFSTNKKKIKEFHQYFQYVDEDFEYGSQLEPC  
 LLRNWSKSKWFLELFEKNIPDIKACKSAKDNSMTLLQATLDIVETETSKENSPNYGLLLLWASLSNAV  
 VAFWTLAHVLSHPDIHKAIMEGISSVFGKAGKDKIKVSEDDLENLLL IKWCVLETIRLKAPGVITRQVVK  
 PVEILNYIIPSGDLLMLSPFWLHRNPKYFPEPELFPKPERWKKANLEKHSFLDCFMAFGSGKFQCPARWFA  
 LLEVQMCIIILILYKYDCSLLDPLPKQSYLHLVGVQPQEGQRIEYQRI

**TR**TRPLEQKLISEEDLAANDILDYKDDDDKV

**Chromatograms:**

[https://cdn.origene.com/chromatograms/mk6569\\_c09.zip](https://cdn.origene.com/chromatograms/mk6569_c09.zip)

**Restriction Sites:**

Sgfl-Mlul

**Cloning Scheme:**


**ACCN:** NM\_016593

**ORF Size:** 1407 bp

**OTI Disclaimer:** The molecular sequence of this clone aligns with the gene accession number as a point of reference only. However, individual transcript sequences of the same gene can differ through naturally occurring variations (e.g. polymorphisms), each with its own valid existence. This clone is substantially in agreement with the reference, but a complete review of all prevailing variants is recommended prior to use. [More info](#)

**OTI Annotation:** This clone was engineered to express the complete ORF with an expression tag. Expression varies depending on the nature of the gene.

**Components:** The ORF clone is ion-exchange column purified and shipped in a 2D barcoded Matrix tube containing 10ug of transfection-ready, dried plasmid DNA (reconstitute with 100 ul of water).

- Reconstitution Method:**
1. Centrifuge at 5,000xg for 5min.
  2. Carefully open the tube and add 100ul of sterile water to dissolve the DNA.
  3. Close the tube and incubate for 10 minutes at room temperature.
  4. Briefly vortex the tube and then do a quick spin (less than 5000xg) to concentrate the liquid at the bottom.
  5. Store the suspended plasmid at -20°C. The DNA is stable for at least one year from date of shipping when stored at -20°C.

**RefSeq:** [NM\\_016593.5](#)

**RefSeq Size:** 2444 bp

**RefSeq ORF:** 1410 bp

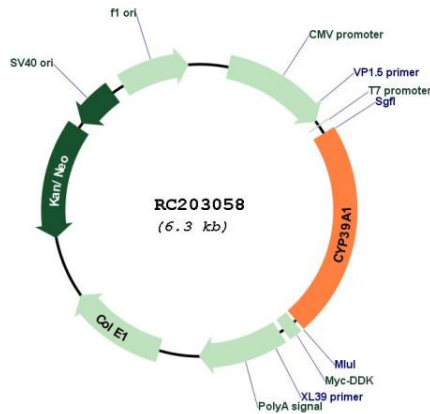
**Locus ID:** 51302

**UniProt ID:** [Q9NYL5](#)

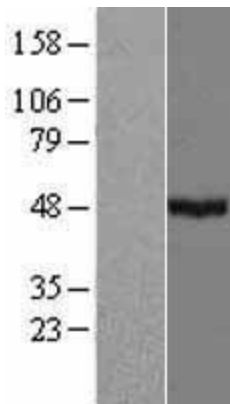
**Cytogenetics:** 6p12.3  
**Domains:** p450  
**Protein Families:** Druggable Genome, P450, Transmembrane  
**Protein Pathways:** Primary bile acid biosynthesis  
**MW:** 54 kDa

**Gene Summary:** This gene encodes a member of the cytochrome P450 superfamily of enzymes. The cytochrome P450 proteins are monooxygenases which catalyze many reactions involved in drug metabolism and synthesis of cholesterol, steroids and other lipids. This endoplasmic reticulum protein is involved in the conversion of cholesterol to bile acids. Its substrates include the oxysterols 25-hydroxycholesterol, 27-hydroxycholesterol and 24-hydroxycholesterol. Alternate splicing results in multiple transcript variants. [provided by RefSeq, Jul 2013]

### Product images:



Circular map for RC203058



Western blot validation of overexpression lysate (Cat# [LY413838]) using anti-DDK antibody (Cat# [TA50011-100]). Left: Cell lysates from untransfected HEK293T cells; Right: Cell lysates from HEK293T cells transfected with RC203058 using transfection reagent MegaTran 2.0 (Cat# [TT210002]).