

Product datasheet for **RC203053**

SULT1B1 (NM_014465) Human Tagged ORF Clone

Product data:

Product Type:	Expression Plasmids
Product Name:	SULT1B1 (NM_014465) Human Tagged ORF Clone
Tag:	Myc-DDK
Symbol:	SULT1B1
Synonyms:	ST1B1; ST1B2; SULT1B2
Mammalian Cell Selection:	Neomycin
Vector:	pCMV6-Entry (PS100001)
E. coli Selection:	Kanamycin (25 ug/mL)
ORF Nucleotide Sequence:	>RC203053 ORF sequence Red=Cloning site Blue=ORF Green=Tags(s)

TTTTGTAATACGACTCACTATAGGGCGCCGGGAATTCGTCGACTGGATCCGGTACCGAGGAGATCTGCC
GCC**CGGATCGCC**

ATGCTTTCCCAAAAGATATTCTGCGAAAAGATCTGAAGTTGGTCCATGGTTATCCCATGACCTGTGCTT
TTGCAAGCAACTGGGAAAAAATTGAACAGTTCATAGCAGACCAGATGACATTGTGATAGCCACTTATCC
TAAATCAGGTAAGTGGTTAGTGAATATAGACATGATTCTAAATGATGGAGATATTGAAAAATGT
AAGCGAGGTTTTACTGAAAAAGTTCCAATGTTGAAATGACTCTCCCTGGATTAAGAACATCAGGTA
TAGAACAATTGGAGAAGAATCCATCACCCCGGATTGTGAAAACACATCTACCGACTGATCTTCTCTAA
ATCTTTCTGGGAAAAACAATTGCAAGATGATTTATCTGGCTCGTAATGCCAAGGATGTTTCAGTCTCATAT
TACCATTTGACTTAATGAATAATTTACAGCCTTTTCTGGTACCTGGGAAGAATATCTGGAGAAATTTCT
TAACTGGAAAAGTGGCCTATGGTTCTGGTTTACTCATGTTAAAAACTGGTGGAAGAGAAAGGAAGAACA
CCCAATACTTTTTTGTACTATGAAGATATGAAAGAGAATCCAAAGGAGGAAATCAAGAAGATCATTAGA
TTTCTAGAGAAGAACCTGAATGATGAGATCTGGATAGGATCATCCATCACACCTCATTTGAAGTGA
AGGACAATCCTTTGGTAAATTATACACATCTACCAACTACAGTATGGATCATAGCAAATCCCCTTTTAT
GCGTAAAGGACGGCTGGTACTGGAAGAATTACTCACCGTGGCCAAAATGAGAAATTTGATGCTATT
TATGAGACAGAAATGTCCAAAAGTCACTTCAATTCGCACAGAGATT

ACGCGTACGCGGCCGCTCGAGCAGAAACTCATCTCAGAAGAGGATCTGGCAGCAAATGATATCCTGGATT
ACAAGGATGACGACGATAAGGTTTAA



[View online »](#)

Protein Sequence: >RC203053 protein sequence
Red=Cloning site Green=Tags(s)

MLSPKDILRKDLKLVHGYPMTCASFASNWEKIEQFHSRPDDIVIATYPKSGTTWVSEIIDMILNDGDIEKC
 KRGFITEKVPMLEMTLPGLRTSGIEQLEKNPSPRIVKTHLPTDLLPKSFWENNCKMIYLARNAKDVSYSY
 YHFDLMNNLQFPFGTWEEYLEKFLTGKVAYGSWFTHVKNWWRKKEHPILFLYYEDMKENPKEEIKKIIR
 FLEKLNLDIILDRIIHHTSFEVMKDNPLVNYTHLPTTVMDSKSPFMRKGTAGDWKNYFTVAQNEKFDAI
 YETEMSKTALQFRTEI

TRTRPLEQKLISEEDLAANDILDYKDDDDKV

Chromatograms: https://cdn.origene.com/chromatograms/mk6569_d12.zip

Restriction Sites: SgfI-MluI

Cloning Scheme:



ACCN: NM_014465

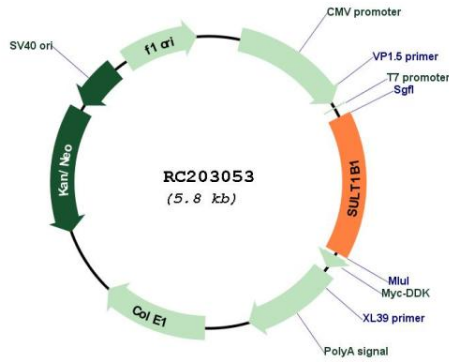
ORF Size: 888 bp

OTI Disclaimer: Due to the inherent nature of this plasmid, standard methods to replicate additional amounts of DNA in E. coli are highly likely to result in mutations and/or rearrangements. Therefore, OriGene does not guarantee the capability to replicate this plasmid DNA. Additional amounts of DNA can be purchased from OriGene with batch-specific, full-sequence verification at a reduced cost. Please contact our customer care team at custsupport@origene.com or by calling 301.340.3188 option 3 for pricing and delivery.

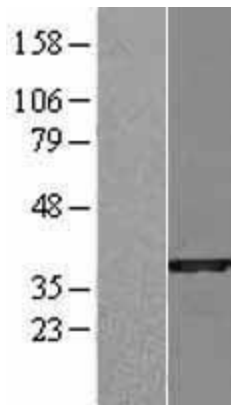
The molecular sequence of this clone aligns with the gene accession number as a point of reference only. However, individual transcript sequences of the same gene can differ through naturally occurring variations (e.g. polymorphisms), each with its own valid existence. This clone is substantially in agreement with the reference, but a complete review of all prevailing variants is recommended prior to use. [More info](#)

OTI Annotation:	This clone was engineered to express the complete ORF with an expression tag. Expression varies depending on the nature of the gene.
Components:	The ORF clone is ion-exchange column purified and shipped in a 2D barcoded Matrix tube containing 10ug of transfection-ready, dried plasmid DNA (reconstitute with 100 ul of water).
Reconstitution Method:	<ol style="list-style-type: none">1. Centrifuge at 5,000xg for 5min.2. Carefully open the tube and add 100ul of sterile water to dissolve the DNA.3. Close the tube and incubate for 10 minutes at room temperature.4. Briefly vortex the tube and then do a quick spin (less than 5000xg) to concentrate the liquid at the bottom.5. Store the suspended plasmid at -20°C. The DNA is stable for at least one year from date of shipping when stored at -20°C.
RefSeq:	NM_014465.4
RefSeq Size:	1320 bp
RefSeq ORF:	891 bp
Locus ID:	27284
UniProt ID:	O43704
Cytogenetics:	4q13.3
Domains:	Sulfotransfer
MW:	34.9 kDa
Gene Summary:	Sulfotransferase enzymes catalyze the sulfate conjugation of many hormones, neurotransmitters, drugs, and xenobiotic compounds. These cytosolic enzymes are different in their tissue distributions and substrate specificities. The gene structure (number and length of exons) is similar among family members. However, the total genomic length of this gene is greater than that of other SULT1 genes. [provided by RefSeq, Jul 2008]

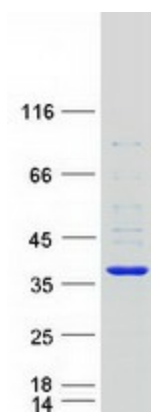
Product images:



Circular map for RC203053



Western blot validation of overexpression lysate (Cat# [LY415230]) using anti-DDK antibody (Cat# [TA50011-100]). Left: Cell lysates from untransfected HEK293T cells; Right: Cell lysates from HEK293T cells transfected with RC203053 using transfection reagent MegaTran 2.0 (Cat# [TT210002]).



Coomassie blue staining of purified SULT1B1 protein (Cat# [TP303053]). The protein was produced from HEK293T cells transfected with SULT1B1 cDNA clone (Cat# RC203053) using MegaTran 2.0 (Cat# [TT210002]).