

## Product datasheet for **RC203051**

### ORMDL2 (NM\_014182) Human Tagged ORF Clone

#### Product data:

**Product Type:** Expression Plasmids  
**Product Name:** ORMDL2 (NM\_014182) Human Tagged ORF Clone  
**Tag:** Myc-DDK  
**Symbol:** ORMDL2  
**Synonyms:** adoplín-2; HSPC160; MST095; MSTP095  
**Mammalian Cell Selection:** Neomycin  
**Vector:** pCMV6-Entry (PS100001)  
**E. coli Selection:** Kanamycin (25 ug/mL)  
**ORF Nucleotide Sequence:** >RC203051 ORF sequence  
Red=Cloning site Blue=ORF Green=Tags(s)

TTTTGTAATACGACTCACTATAGGGCGGCCGGAATTCGTCGACTGGATCCGGTACCGAGGAGATCTGCC  
GCC**CGATCGC**C

ATGAATGTGGGGTGGCACACAGCGAAGTAAACCCCAACACCCGAGTGATGAATAGCCGAGGCATCTGGC  
TGGCTACATCATCTTGGTAGGATTGCTGCATATGGTTCTACTCAGCATCCCCTTCTTCAGATTCTGT  
TGTCTGGACCTGACCAACGTCATCCATAACCTGGCTACGTATGTCTTCTTCATACGGTAAAGGGACA  
CCCTTTGAGACTCCTGACCAAGAAAGGCCGGCTACTGACACTGGGAGCAAATGGACTATGGGCTCC  
AGTTTACCTCTCCCGAAGTTCCTCAGCATCTCTCTATTGTGCTCTATCTCTGGCCAGCTTCTATAC  
CAAGTATGATGCTGCGCACTTCCTCATCAACACAGCCTCATTGCTAAGTGTACTGCTGCCGAAGTTGCC  
CAGTTCATGGGGTTCGTGTCTTTGGCATCAACAATAAC

**ACGCGT**ACGCGGCCGCTCGAGCAGAACTCATCTCAGAAGAGGATCTGGCAGCAAATGATATCCTGGATT  
ACAAGGATGACGACGATAAGGTTTAA

**Protein Sequence:** >RC203051 protein sequence  
Red=Cloning site Green=Tags(s)

MNVGVAHSEVNPNTVMNSRGIWLAYIILVGLLHMVLLSIPFFSIPVVWTLTNVIHNLATYVFLHTVKGT  
PFETPDQ GKARLLTHWEQMDYGLQFTSSRKFLSISPIVL YLLASFYTKYDAAHFLINTASLLSVLLPKLP  
QFHGVRVFGINKY

**TR**TRPLEQKLI SEEDLAANDILDYKDDDDKV

**Chromatograms:** [https://cdn.origene.com/chromatograms/mk6054\\_h04.zip](https://cdn.origene.com/chromatograms/mk6054_h04.zip)



[View online »](#)

Restriction Sites: SgfI-MluI

Cloning Scheme:



ACCN: NM\_014182

ORF Size: 459 bp

OTI Disclaimer: The molecular sequence of this clone aligns with the gene accession number as a point of reference only. However, individual transcript sequences of the same gene can differ through naturally occurring variations (e.g. polymorphisms), each with its own valid existence. This clone is substantially in agreement with the reference, but a complete review of all prevailing variants is recommended prior to use. [More info](#)

OTI Annotation: This clone was engineered to express the complete ORF with an expression tag. Expression varies depending on the nature of the gene.

Components: The ORF clone is ion-exchange column purified and shipped in a 2D barcoded Matrix tube containing 10ug of transfection-ready, dried plasmid DNA (reconstitute with 100 ul of water).

Reconstitution Method:

1. Centrifuge at 5,000xg for 5min.
2. Carefully open the tube and add 100ul of sterile water to dissolve the DNA.
3. Close the tube and incubate for 10 minutes at room temperature.
4. Briefly vortex the tube and then do a quick spin (less than 5000xg) to concentrate the liquid at the bottom.
5. Store the suspended plasmid at -20°C. The DNA is stable for at least one year from date of shipping when stored at -20°C.

RefSeq: [NM\\_014182.3](#), [NP\\_054901.1](#)

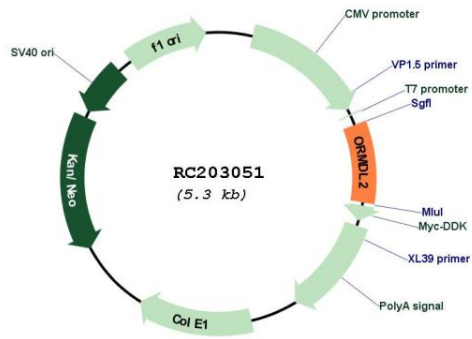
RefSeq Size: 1361 bp

RefSeq ORF: 462 bp

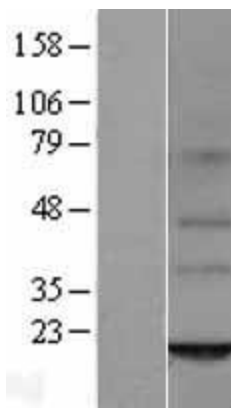
Locus ID: 29095

**UniProt ID:** [Q53FV1](#)  
**Cytogenetics:** 12q13.2  
**Domains:** ORMDL  
**Protein Families:** Transmembrane  
**MW:** 17.4 kDa  
**Gene Summary:** Negative regulator of sphingolipid synthesis.[UniProtKB/Swiss-Prot Function]

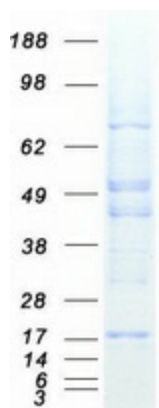
**Product images:**



Circular map for RC203051



Western blot validation of overexpression lysate (Cat# [LY402286]) using anti-DDK antibody (Cat# [TA50011-100]). Left: Cell lysates from untransfected HEK293T cells; Right: Cell lysates from HEK293T cells transfected with RC203051 using transfection reagent MegaTran 2.0 (Cat# [TT210002]).



Coomassie blue staining of purified ORMDL2 protein (Cat# [TP303051]). The protein was produced from HEK293T cells transfected with ORMDL2 cDNA clone (Cat# RC203051) using MegaTran 2.0 (Cat# [TT210002]).