

## Product datasheet for RC203050

### COMMD9 (NM\_014186) Human Tagged ORF Clone

#### Product data:

**Product Type:** Expression Plasmids  
**Product Name:** COMMD9 (NM\_014186) Human Tagged ORF Clone  
**Tag:** Myc-DDK  
**Symbol:** COMMD9  
**Synonyms:** C11orf55; HSPC166; LINC00610  
**Mammalian Cell Selection:** Neomycin  
**Vector:** pCMV6-Entry (PS100001)  
**E. coli Selection:** Kanamycin (25 ug/mL)  
**ORF Nucleotide Sequence:** >RC203050 ORF sequence  
 Red=Cloning site Blue=ORF Green=Tags(s)

TTTTGTAATACGACTCACTATAGGGCGGCCGGAATTCGTCGACTGGATCCGGTACCGAGGAGATCTGCC  
 GCC**CGATCGCC**

ATGGCTGCCCTGACAGCGGAGCATTTTGCAGCACTCCAGAGCCTGCTCAAGGCCTCTCGAAAGATGTTG  
 TCAGACAGCTGTGTCAAGAAAGCTTTTCCAGTTCAGCCCTTGGCTTGAAAAACTCTGGATGTTACATG  
 TTCCAGCTTGTCTGTGACCCAGGAGGAGGCAGAGGAAGTCTCCAGGCTCTGCACCGCTCACTAGGCTG  
 GTGGCATTCCGTGACCTGCTCTGCCGAGGCAATTCTGGCTCTTTCCAGAAAATTTCCACAAAACC  
 TCAAAAACCTGCTGACAAAGATCATCTAGAACATGTGTCTACTTGGAGAACCGAAGCCAGGCAAATCA  
 GATCTCTCTGCCACGCTGGTCTGATCTGGACTGGAGAGTGGATATCAAAAACCTCCTCAGACAGCATCAGC  
 CGCATGGCCGTCCACCTGCCTGCTCCAGATGAAGATCCAAGAAGATCCAGCCTATGCGGAGACAAAAC  
 CCTCCATCTCAGCTGTCACCGTGGAGCTGAGCAAAGAAACTGGACACCATGTTAGATGGCCTGGGCC  
 CATCCGAGACCAACTCTCTGCCGTGGCCAGTAA

**ACGCGT**ACGCGGCCGCTCGAGCAGAAACTCATCTCAGAAGAGGATCTGGCAGCAAATGATATCCTGGATT  
 ACAAGGATGACGACGATAAGGTTTAA

**Protein Sequence:** >RC203050 protein sequence  
 Red=Cloning site Green=Tags(s)

MAALTAEHFAALQSLKASSKDVVRQLCQESFSSALGLKLLDVTCSLSVTQEEAEELLQALHRLTRL  
 VAFRDLSSAEAILALFPENFHQNLKLLTKIILEHVSTWRTEAQANQISLPRLDLDRVDIKTSSDSIS  
 RMAVPTCLLQMKIQEDPSLGGDKPSISAVTVLVELSKETLDTMLDGLGRIRDQLSAVASK

**TRTRPLEQKLI**SEEDLAANDILDYKDDDDKV

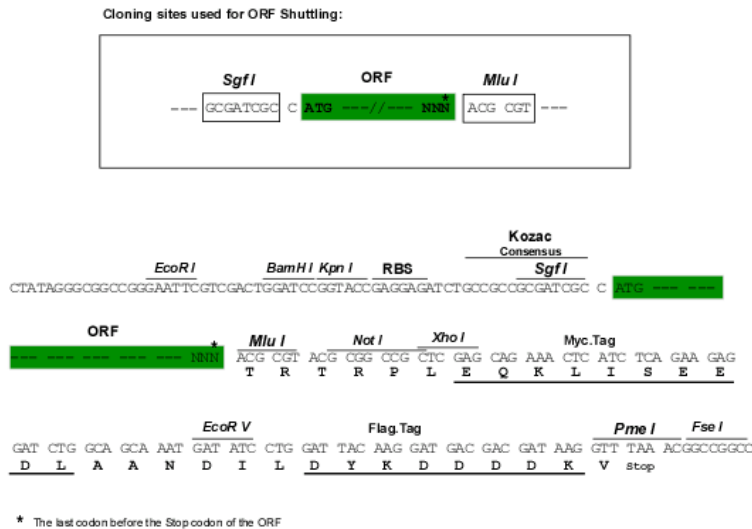


[View online »](#)

**Chromatograms:** [https://cdn.origene.com/chromatograms/mk6434\\_d09.zip](https://cdn.origene.com/chromatograms/mk6434_d09.zip)

**Restriction Sites:** SgfI-MluI

**Cloning Scheme:**



**ACCN:** NM\_014186

**ORF Size:** 594 bp

**OTI Disclaimer:** The molecular sequence of this clone aligns with the gene accession number as a point of reference only. However, individual transcript sequences of the same gene can differ through naturally occurring variations (e.g. polymorphisms), each with its own valid existence. This clone is substantially in agreement with the reference, but a complete review of all prevailing variants is recommended prior to use. [More info](#)

**OTI Annotation:** This clone was engineered to express the complete ORF with an expression tag. Expression varies depending on the nature of the gene.

**Components:** The ORF clone is ion-exchange column purified and shipped in a 2D barcoded Matrix tube containing 10ug of transfection-ready, dried plasmid DNA (reconstitute with 100 ul of water).

**Reconstitution Method:**

1. Centrifuge at 5,000xg for 5min.
2. Carefully open the tube and add 100ul of sterile water to dissolve the DNA.
3. Close the tube and incubate for 10 minutes at room temperature.
4. Briefly vortex the tube and then do a quick spin (less than 5000xg) to concentrate the liquid at the bottom.
5. Store the suspended plasmid at -20°C. The DNA is stable for at least one year from date of shipping when stored at -20°C.

**RefSeq:** [NM\\_014186.4](#)

**RefSeq Size:** 3006 bp

**RefSeq ORF:** 597 bp

**Locus ID:** 29099

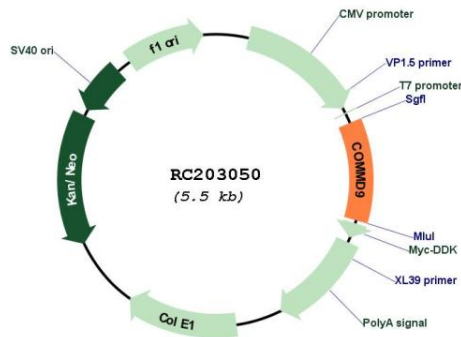
UniProt ID: [Q9P000](#)

Cytogenetics: 11p13

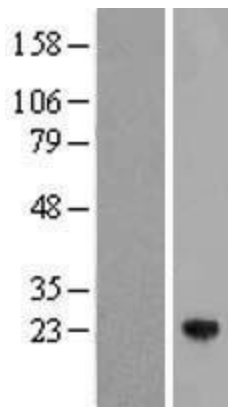
MW: 21.8 kDa

Gene Summary: May modulate activity of cullin-RING E3 ubiquitin ligase (CRL) complexes (PubMed:21778237). May down-regulate activation of NF-kappa-B (PubMed:15799966). Modulates Na(+) transport in epithelial cells by regulation of apical cell surface expression of amiloride-sensitive sodium channel (ENaC) subunits (PubMed:23637203).[UniProtKB/Swiss-Prot Function]

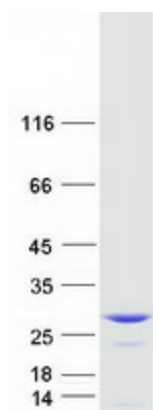
### Product images:



Circular map for RC203050



Western blot validation of overexpression lysate (Cat# [LY415448]) using anti-DDK antibody (Cat# [TA50011-100]). Left: Cell lysates from untransfected HEK293T cells; Right: Cell lysates from HEK293T cells transfected with RC203050 using transfection reagent MegaTran 2.0 (Cat# [TT210002]).



Coomassie blue staining of purified COMMD9 protein (Cat# [TP303050]). The protein was produced from HEK293T cells transfected with COMMD9 cDNA clone (Cat# RC203050) using MegaTran 2.0 (Cat# [TT210002]).