

Product datasheet for **RC203049**

PSF1 (GINS1) (NM_021067) Human Tagged ORF Clone

Product data:

Product Type: Expression Plasmids
Product Name: PSF1 (GINS1) (NM_021067) Human Tagged ORF Clone
Tag: Myc-DDK
Symbol: PSF1
Synonyms: IMD55; PSF1
Mammalian Cell Selection: Neomycin
Vector: pCMV6-Entry (PS100001)
E. coli Selection: Kanamycin (25 ug/mL)
ORF Nucleotide Sequence: >RC203049 ORF sequence
 Red=Cloning site Blue=ORF Green=Tags(s)

TTTTGTAATACGACTCACTATAGGGCGCCGGGAATTCGTCGACTGGATCCGGTACCGAGGAGATCTGCC
 GCC**CGATCGCC**

ATGTTCTGCGAAAAAGCCATGGAAGTATCCGCGAGCTGCATCGCGGCCCGAAGGGCAACTGCCTGCCT
 TCAACGAGGATGGACTCAGACAAGTTCTGGAGGAGATGAAAGCTTTGTATGAACAAAACCACTCTGATGT
 GAATGAAGCAAAGTCAGGTGGACGAAGTATTTGATACCAACTATCAAATTCGACACTGTTCTCTGTTA
 AGAAATCGACGCTGCACTGTAGCATACCTGTATGACCGCTTGCTTCGGATCAGAGCACTCAGATGGGAAT
 ATGGTAGCATCTTGCCAAATGCATTACGATTTACATGGCTGCTGAAGAAATGGAGTGGTTAATAATTA
 TAAAAGATCTCTTGCTACTTATATGAGGTCACTGGGAGGAGATGAAGTTTGGACATTACACAGGATATG
 AAACCACCAAAAAGCCTATATATTGAAGTCCGGTGCTAAAAGACTATGGAGAATTTGAAGTTGATGATG
 GCACTTCAGTCTATTAATAAAAAATAGCCAGCACTTTTTACCTCGATGGAAATGTGAGCAGCTGATCAG
 ACAAGGAGTCCTGGAGCACATCCTGTCA

ACGCGTACGCGGCCGCTCGAGCAGAACTCATCTCAGAAGAGGATCTGGCAGCAAATGATATCCTGGATT
 ACAAGGATGACGACGATAAGGTTTAA

Protein Sequence: >RC203049 protein sequence
 Red=Cloning site Green=Tags(s)

MFCEKAMELIRELHRAPEGQLPAFNEDGLRQVLEEMKALYEQNQSDVNEAKSGGRSDLIPTIKFRHCSLL
 RNRRTVAYLYDRLLRIRALRWEYGSILPNALRFHMAAEMEWFNYYKRSLATYMRSLGGDEGLDITQDM
 KPPKSLYIEVRCLKDYGEFEVDDGTSVLLKKNQHFLLPRWKCEQLIRQGVLEHILS

TRTRPLEQKLISEEDLAANDILDYKDDDDKV



[View online »](#)

Chromatograms: https://cdn.origene.com/chromatograms/mk6055_e05.zip

Restriction Sites: SgfI-MluI

Cloning Scheme:



ACCN: NM_021067

ORF Size: 588 bp

OTI Disclaimer: The molecular sequence of this clone aligns with the gene accession number as a point of reference only. However, individual transcript sequences of the same gene can differ through naturally occurring variations (e.g. polymorphisms), each with its own valid existence. This clone is substantially in agreement with the reference, but a complete review of all prevailing variants is recommended prior to use. [More info](#)

OTI Annotation: This clone was engineered to express the complete ORF with an expression tag. Expression varies depending on the nature of the gene.

Components: The ORF clone is ion-exchange column purified and shipped in a 2D barcoded Matrix tube containing 10ug of transfection-ready, dried plasmid DNA (reconstitute with 100 ul of water).

Reconstitution Method:

1. Centrifuge at 5,000xg for 5min.
2. Carefully open the tube and add 100ul of sterile water to dissolve the DNA.
3. Close the tube and incubate for 10 minutes at room temperature.
4. Briefly vortex the tube and then do a quick spin (less than 5000xg) to concentrate the liquid at the bottom.
5. Store the suspended plasmid at -20°C. The DNA is stable for at least one year from date of shipping when stored at -20°C.

RefSeq: [NM_021067.2](#), [NP_066545.2](#)

RefSeq Size: 3289 bp

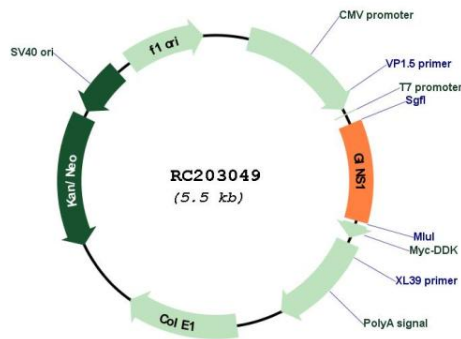
RefSeq ORF: 591 bp

Locus ID: 9837

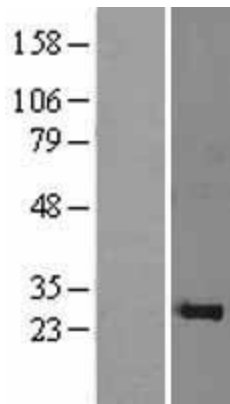
UniProt ID: [Q14691](#)
 Cytogenetics: 20p11.21
 Domains: UPF0080
 MW: 23 kDa

Gene Summary: The yeast heterotetrameric GINS complex is made up of Sld5 (GINS4; MIM 610611), Psf1, Psf2 (GINS2; MIM 610609), and Psf3 (GINS3; MIM 610610). The formation of the GINS complex is essential for the initiation of DNA replication in yeast and *Xenopus* egg extracts (Ueno et al., 2005 [PubMed 16287864]).[supplied by OMIM, Mar 2008]

Product images:



Circular map for RC203049



Western blot validation of overexpression lysate (Cat# [LY402825]) using anti-DDK antibody (Cat# [TA50011-100]). Left: Cell lysates from untransfected HEK293T cells; Right: Cell lysates from HEK293T cells transfected with RC203049 using transfection reagent MegaTran 2.0 (Cat# [TT210002]).