

Product datasheet for **RC203048**

ARMCX2 (NM_014782) Human Tagged ORF Clone

Product data:

Product Type:	Expression Plasmids
Product Name:	ARMCX2 (NM_014782) Human Tagged ORF Clone
Tag:	Myc-DDK
Symbol:	ARMCX2
Synonyms:	ALEX2; GASP9
Mammalian Cell Selection:	Neomycin
Vector:	pCMV6-Entry (PS100001)
E. coli Selection:	Kanamycin (25 ug/mL)



[View online »](#)

ORF Nucleotide
Sequence:

>RC203048 ORF sequence
Red=Cloning site Blue=ORF Green=Tags(s)

TTTTGTAATACGACTCACTATAGGGCGGCCGGGAATTCGTCGACTGGATCCGGTACCGAGGAGATCTGCC
GCCGCGATCGCC

ATGAGCCGCGTTCGGGATGCTGGCTGTGTAGCGCGGGGATAGTGATAGGGGCTGGTGCCTGGTACTGTG
TCTACAAATACACCAGGGGAGAGACCAGACCAAGAAGAGAATGGCCAAGCCAAAAACCGGCTGTGGC
TGGGACTGGAGCCAGGGCTAGAGCTGGGCTAAGAGCCGGATTACAATCGACCTTGGGTCAGGATTCAGT
CCCCAACCCAGTCCGTGCTGAAGCAGAGGACAGGGCCAGGATGAAGCCTCTGCTCTGGACACAGTTG
GAGCTGAGGCAGTGGCCCAGCTGCATCCAGCGCTGAGGCTCAGAGTGGGCGAGGAGTCAAGCCAAAGA
GGCAGATGGAGCCGGGTTGGGCCTAAGGCCGAATCAGTAGTTGGGGCTGCAATGGCTTCTGCAATAGCA
CCACCTCCCGGGTGACAGAGGCCCTTGGGGCTGCAGAAGCCCTGCAATGGCAGGGGCTCCCAAAGTGG
CAGAAGCTCCAGAGAAGCGGAGACTTCCAGGGCAGCGGTGCCTCCTGGGACAGTGGTGCCTACCGAAGC
GGCAGCACCCACTGAGGTGACCGAGGGTCTGGGGTAGCAGCACCTACCAAGGTAGCTGAAGCTCCCGGG
GTGGCATCGCCTACCGAGGCAGCTGAGGCTCCTGTGCCCGCAACGCCCTACTGGGGCTGCAGCACCTACTG
GGGCTGCAGAGTCTCCTGGAACCTCTGGTTCGCCCTAGAACAGCGGTGGTTCCTGGAACATCAGTGCCAA
GAAAGCAACCCCTGGGGCTCACACTGGGGCTATACCGAAAGCCACATCAGCGACTGGAGCGGTACCCAAA
GGTGGAGGCAAGGGTGTAAACAGGTCCCGGAATGGGGCAAGGGCAAGGGCAAGAAAAGCAAAGTTGAAG
TAGACGAACTGGGGATGGGCTTCCGTCTGGAGATGGGGCTGCAGCAGCTGCTGCAGCCTCTGCTAATGG
CGGACAGGCTTTCCTGGCAGAGGTCCCTGATTCTGAGGAAGGGGAGTCCGGGTGGACTGACACAGAGTCA
GATTCAGACTCTGAGCCCGAGACCCAGCGCAGAGGGAGGGGAAGAAGACCCGTTGCCATGCAGAAGCGCC
CCTTTCCTTATGAAATTGATGAGATTCTGGGTGTCGCGATCTCAGGAAGGTCTTGCCTTGCTTCAGAA
ATCTGATGATCCTTTCATCCAACAGGTAGCTTTGCTCACTCTGAGCAACAATGCCAATTATTCATGCAAT
CAAGAGACAATCCGCAAATTGGGAGGCCTCCCAATTATTGCAAACATGATCAACAAAACATGATCCACACA
TTAAGGAAAAAGCCTTAATGGCCATGAATAACCTGAGTGAGAATTATGAAAATCAGGGCCGGCTTCAGGT
GTACATGAATAAAGTGATGGATGATATCATGGCCTCTAACCTGAACTCAGCAGTTCAGTGTGGACTA
AAATTTCTAACAAACATGACTATTACTAATGACTACCAACACCTGCTTGCAATTCATTGCAAACCTTTT
TCCGTTTGCTATCTCAGGGAGGTGGAAAAATCAAGGTTGAGATTTTGAAAATCCTTTCGAATTTTGCTGA
AAATCCAGATATGTTGAAGAACTTCTCAGTACCCAAGTCCAGCATCATTTAGTTCCTCTATAATTCT
TACGTGGAATCAGAAATCCTTATTAATGCCCTTACTCTATTTGAGATTATCTATGACAATCTCAGAGCAG
AAGTGTTTAACTATAGAGAATCAATAAAGGTTCCCTTTTTTACTTATGCACTACATCTGGAGTGTGTGT
TAAGAAAATTAGAGCCTTAGCAAATCACCATGACCTCTTAGTGAAGTGAAGTTATAAACTAGTGAAC
AAATTC

ACGCGTACGCGGCCGCTCGAGCAGAACTCATCTCAGAAGAGGATCTGGCAGCAAATGATATCCTGGATT
ACAAGGATGACGACGATAAGGTTTAA

Protein Sequence: >RC203048 protein sequence
Red=Cloning site Green=Tags(s)

```
MSRVRDAGCVAAGIVIGAGAWYCVYKYTRGRDQTKKRMKPKNRAVAGTGARARAGLRAGFTIDLGGSGF
PPTPVRAEAEDRAQDEASALDTVGAEEVAPAASSAEAQSGAGSQAQAEADGAGVGPKAESVVGAAAMASIA
PPPVGVTALGAAEAPAMAGAPKVAEAPREAETSRAAVPPGTVVPTEAAAPTVEVTEGPGVAAPTCKVAEAPG
VASPTEAAEAPVPATPTGAAAPTGAESPSTSGSPRTAVVPGTSAKKATPGAHTGAIPKATSATGAVPK
GGGKGVTRSRNGKGGKGGKSKVEVDELGMGFRPGDGAAAAAASANGGQAFLEAVPDSEEGESGWDTES
DSDSEPETQRRGRGRPAMQKRPFYIEIDEILGVRDLRKLALLQKSDDPFIQQVALLTLSNNANYSCN
QETIRKLGGLPIIANMINKDPHIKEKALMAMNNLSENYENQGRQLQVYMNKVMDDIMASNLNSAVQVVG
KFLTNMTITNDYQHLLVNSIANFFRLSQGGGKIKVEILKILSNFAENPDMLKLLSTQVPASFSSLYNS
YVESEILINALTLFEIYDNLRAEVFNREFNKGSLFYLCTTSGVCVKKIRALANHHDLLVKVKIKLVN
KF
```

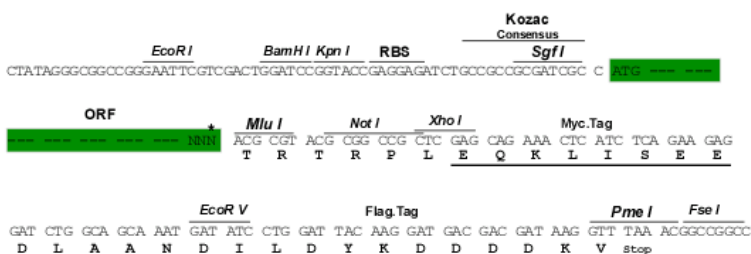
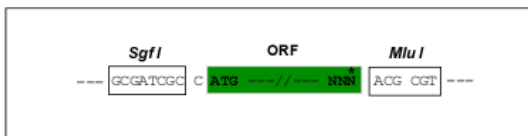
TRTRPLEQKLISEEDLAANDILDYKDDDDKV

Chromatograms: https://cdn.origene.com/chromatograms/mk6153_h04.zip

Restriction Sites: SgfI-MluI

Cloning Scheme:

Cloning sites used for ORF Shuttling:



* The last codon before the Stop codon of the ORF

ACCN: NM_014782

ORF Size: 1896 bp

OTI Disclaimer: The molecular sequence of this clone aligns with the gene accession number as a point of reference only. However, individual transcript sequences of the same gene can differ through naturally occurring variations (e.g. polymorphisms), each with its own valid existence. This clone is substantially in agreement with the reference, but a complete review of all prevailing variants is recommended prior to use. [More info](#)

OTI Annotation: This clone was engineered to express the complete ORF with an expression tag. Expression varies depending on the nature of the gene.

Components: The ORF clone is ion-exchange column purified and shipped in a 2D barcoded Matrix tube containing 10ug of transfection-ready, dried plasmid DNA (reconstitute with 100 ul of water).

Reconstitution Method:

1. Centrifuge at 5,000xg for 5min.
2. Carefully open the tube and add 100ul of sterile water to dissolve the DNA.
3. Close the tube and incubate for 10 minutes at room temperature.
4. Briefly vortex the tube and then do a quick spin (less than 5000xg) to concentrate the liquid at the bottom.
5. Store the suspended plasmid at -20°C. The DNA is stable for at least one year from date of shipping when stored at -20°C.

RefSeq: [NM_014782.3](#)

RefSeq Size: 2853 bp

RefSeq ORF: 1899 bp

Locus ID: 9823

UniProt ID: [Q7L311](#)

Cytogenetics: Xq22.1

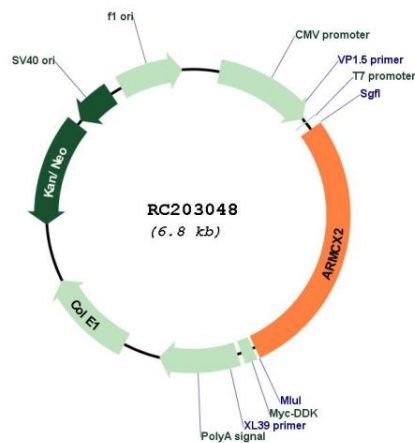
Domains: DUF634

Protein Families: Transmembrane

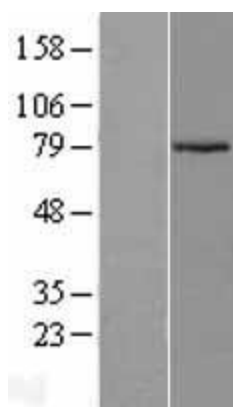
MW: 65.7 kDa

Gene Summary: This gene encodes a protein containing a potential N-terminal transmembrane domain and multiple armadillo (arm) repeats. Proteins containing arm repeats are involved in development, maintenance of tissue integrity, and tumorigenesis. This gene is located in a cluster of related genes on chromosome X. There is a pseudogene for this gene on chromosome 7. Alternative splicing in the 5' UTR results in multiple transcript variants encoding the same protein. [provided by RefSeq, Aug 2013]

Product images:



Circular map for RC203048



Western blot validation of overexpression lysate (Cat# [LY402377]) using anti-DDK antibody (Cat# [TA50011-100]). Left: Cell lysates from untransfected HEK293T cells; Right: Cell lysates from HEK293T cells transfected with RC203048 using transfection reagent MegaTran 2.0 (Cat# [TT210002]).